



# TYGER®

## FENDER FLARE

TG-FF8C4408



### ATTENTION!

PLEASE READ THE INSTRUCTIONS CAREFULLY BEFORE STARTING INSTALLATION. PLEASE FOLLOW THE APPROVED INSTALLATION ACCORDING TO THE WRITTEN INSTRUCTIONS. FAILURE TO DO SO MAY CAUSE DAMAGE TO YOUR VEHICLE AND INVALIDATE THE WARRANTY.



### WARNING!

PARTICLES & DIRT STUCK BETWEEN INSTALLED FLARES AND VEHICLE'S FENDERS MAY CAUSE SCRATCHING AND PAINT WEAR FROM VEHICLE VIBRATION. INSTALLATION IS DONE WITH BUYER'S AND/OR USER'S UNDERSTANDING THAT THIS DAMAGE MAY POTENTIALLY OCCUR. TYGER™ IS NOT RESPONSIBLE FOR ANY DAMAGE FROM THIS CAUSE.

#### PRIOR TO INSTALLATION:



CHECK EVERYTHING BEFORE INSTALLATION



USE NON-ABRASIVE SURFACE TO INSTALL



VERIFY FITMENT OF FLARES TO VEHICLE



REMOVE DECALS & MUD FLAPS FIRST



ABRASIVE DETERGENT IS PROHIBITED

#### ABOUT PAINTING:



NO RETURN FOR PAINTED ITEMS



NO SOLVENT CLEAN ALLOWED



DRY IT OUT BEFORE PAINT



ADHESION PROMOTER IS REQUIRED



USE HIGH QUALITY AUTOMOTIVE PAINT



USE FLEX ADDITIVE FOR EDGE PAINT

#### SAFETY INFORMATION:



NO AUTOMATIC BRUSH-STYLE WASH

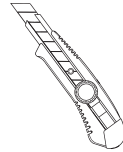


CHECK TIGHTNESS



CHECK CAREFULLY BEFORE DRIVE

#### TOOLS FOR EASIER INSTALLATION



Utility Knife



#2 Phillips Driver



Socket Wrench



10mm Socket



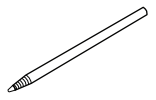
Awl



Pliers



T15 Torx Bit



Grease Pencil

#### HARDWARE KIT INCLUDED



[A] Edge Trim



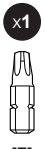
[B] Torx Bolt



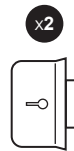
[C] SS Washer



[D] Nylock Nut



[E] T45 Torx Bit



[F] U-Clip



[G] 3/4" PH Tapping Screw



[H] Mylar Tab



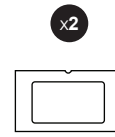
[I] Long U-Clip



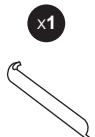
[J] Dacromet Outer Clip



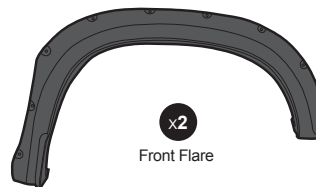
[K] 5/8" PH Truss Screw



[L] Clear Tab



[M] Edge Trim Tool



x2 Front Flare



x2 Rear Flare

DAMAGED or MISSING parts?

[www.TygerAuto.com/Contact](http://www.TygerAuto.com/Contact)





# TYGER®

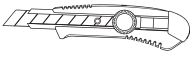
## EDGE TRIM INSTALLATION

- Peel 2 to 3" of red vinyl backing away from one end of the **Edge Trim [A]**.
- Apply **Edge Trim [A]** over top edge of flare with adhesive side contacting inside edge of flare.
- Press **Edge Trim [A]** into place and apply thumb pressure to ensure good adhesion, pull away red backing as you work your way around flare edge in one-foot increments.

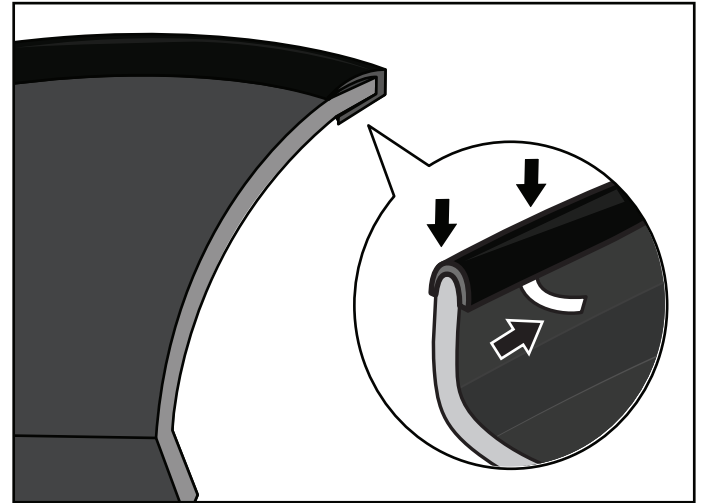
### You will need:



Edge Trim [A]



Utility Knife



### NOTE!

**DO NOT** stretch Edge Trim during application.

## DECORATIVE RIVET INSTALLATION

- Put a **Torx Bolt [B]** with a **Washer [C]** through each of the top holes around the flare and using a **Nylock Nut [D]** to secure on the other side. Using a socket wrench and the supplied **Torx Bit [E]** on an electric drill to tighten bolts. **DO NOT** over-tighten as this may damage the flare.

### You will need:



[B]  
Torx Bolt



[C]  
SS Washer



[D]  
Nylock Nut



[E]  
T45 Torx Bit



1/2"  
Wrench



Electric Drill

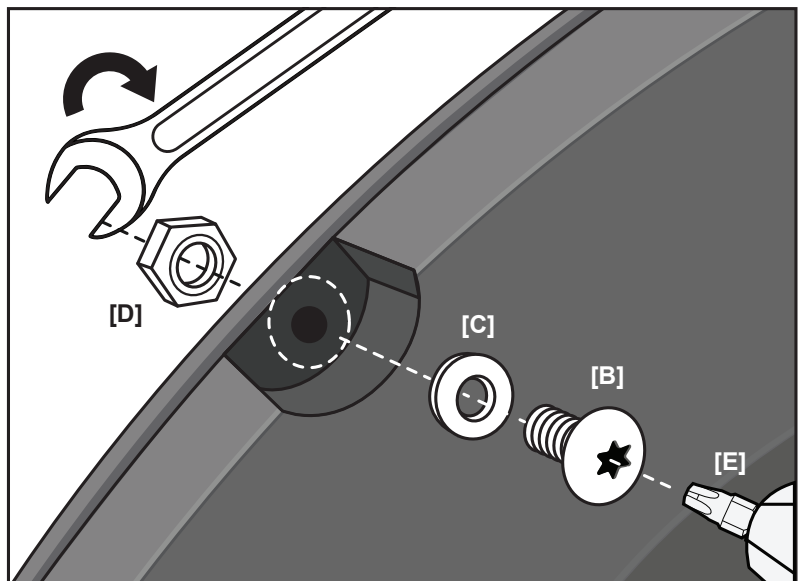
### NOTE!

- **DO NOT** drill holes on the vehicle body as rivets are decorative and fasten only to the flare. Do not attempt to use the bolts to fasten flare to vehicle body.

- All exposed fasteners and bare metal should be treated with rust resistant paint before installing flares. Spray inner fender wells with undercoating after flare installation.

- For vehicle with large tires may require lowering bump stops and/or installing steering stops to prevent tire from contacting flares.

- Modification may be necessary to maintain a minimum 4" clearance between flares and exhaust pipes. (Exhaust gases should not vent directly onto flares)





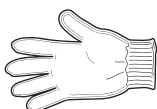
# TYGER®

## FRONT FLARES INSTALLATION



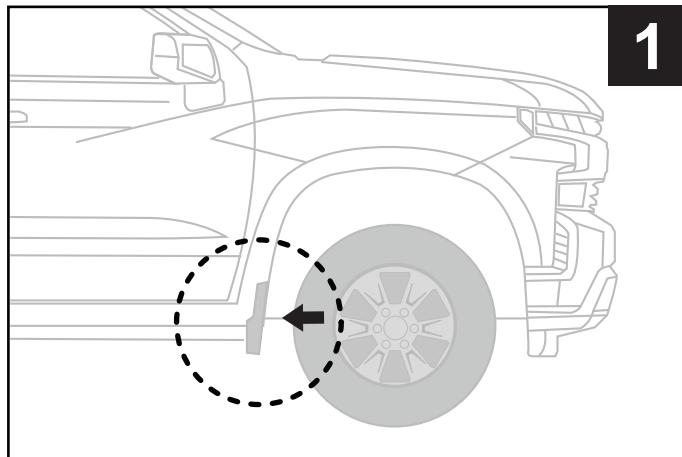
### ATTENTION!

SOME COMPONENTS MIGHT BE SHARP, FOR SAFETY CONCERNS, PLEASE WEAR GLOVES DURING THE INSTALLATION FOR PROTECTION IF IT IS NEEDED.

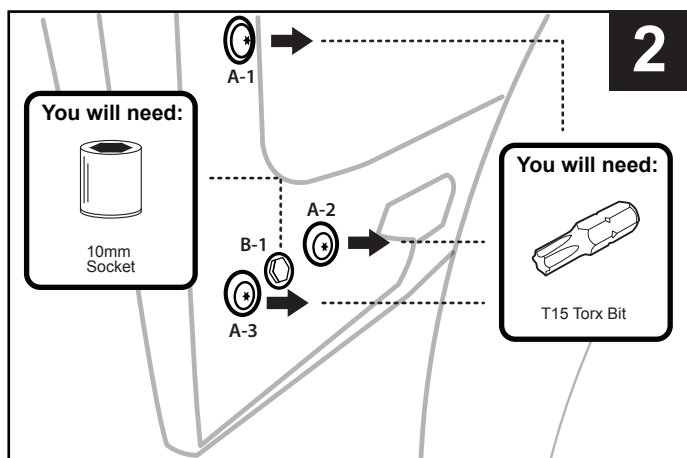


### NOTE!

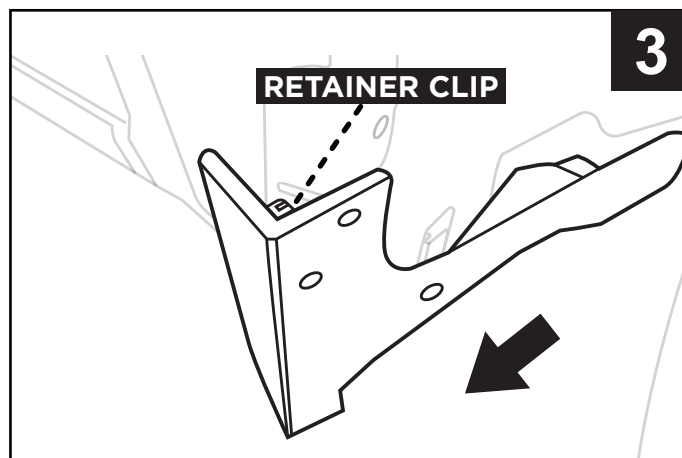
PLEASE USE APPROPRIATE TOOLS TO CLEAN THE VEHICLE IF IT IS NECESSARY, DRY IT OUT BEFORE YOU START THE INSTALLATION.



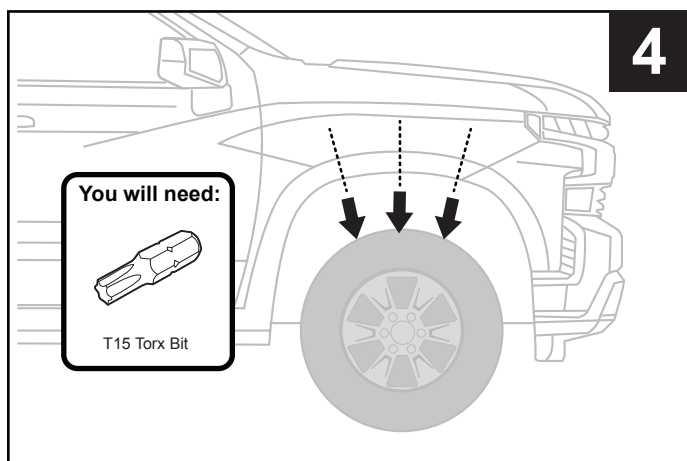
1. Determine the front passenger factory mud flap.



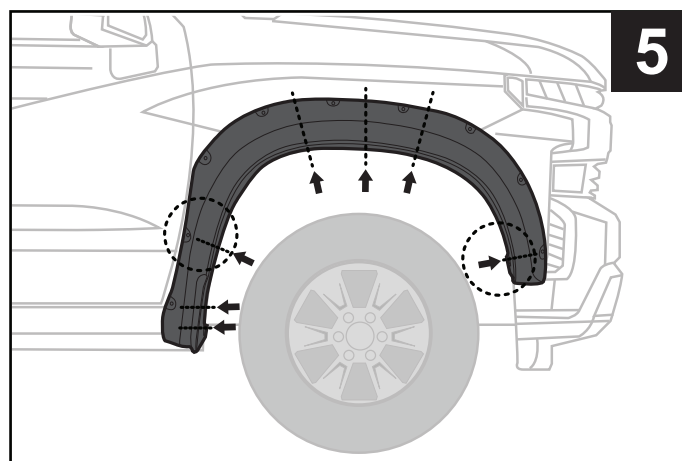
2. Following the diagram, remove 3 factory installed T15 screws, and 1 factory installed 10mm bolt. NOTE: A-1 & A-2 screws will be reused in STEP 12 to install flare.



3. Carefully pull flap away to detach the retainer clip. Remove flap. If needed, use pliers to help grip and remove clip from the rear.



4. Uninstall 3 factory installed T15 from the well of wheel per diagram. NOTE: These screws will be reused to install flare in STEP 11.

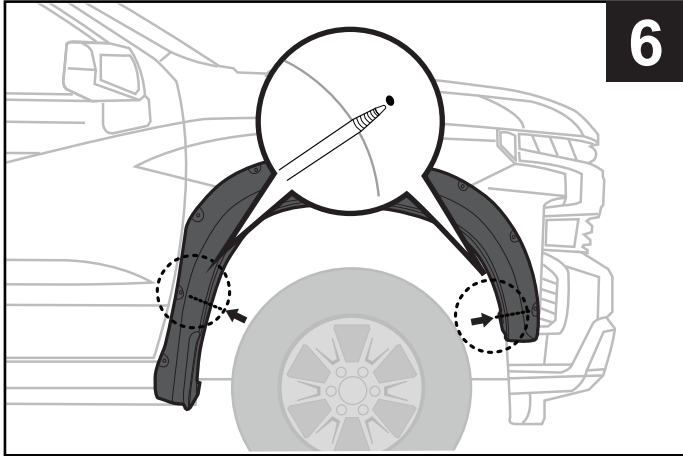


5. Press and secure flare into position against vehicle. Flare holes should line up with vehicle screw holes.



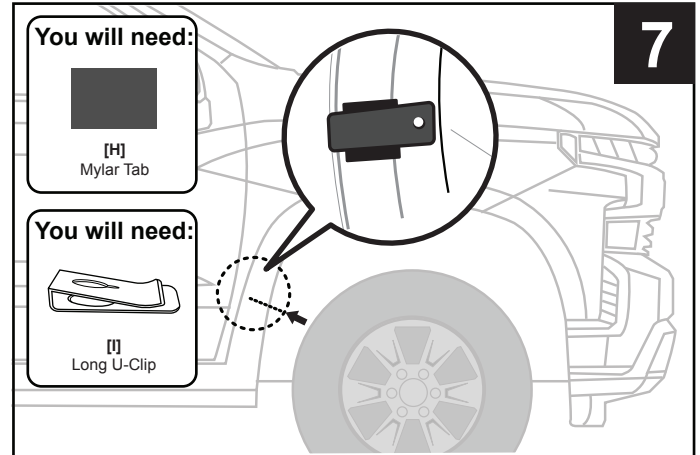
# TYGER®

6



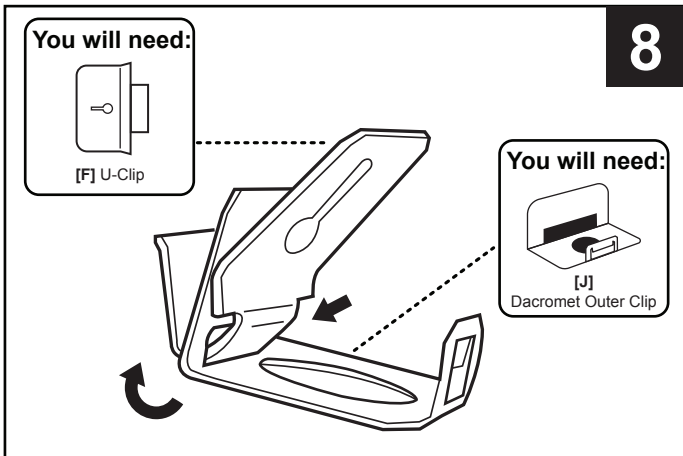
6. With grease pencil, mark 2 flare hole positions shown. Set aside flare for now.

7



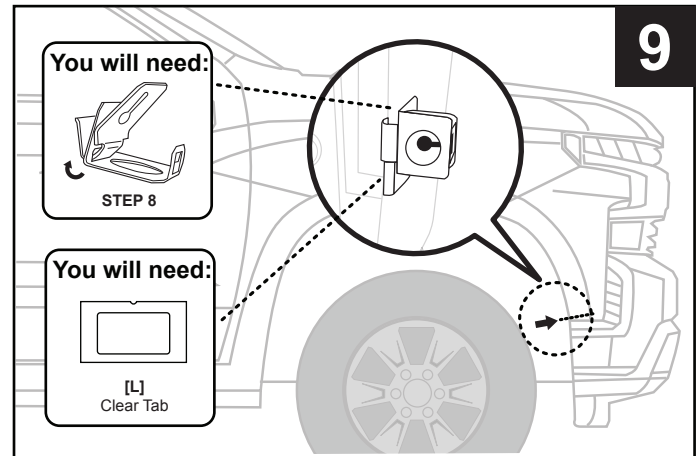
7. Without flare, apply supplied Mylar Tab [H] over the rear marked location in STEP 6. Install 1 Long U-Clip [I] as shown over the tab.

8



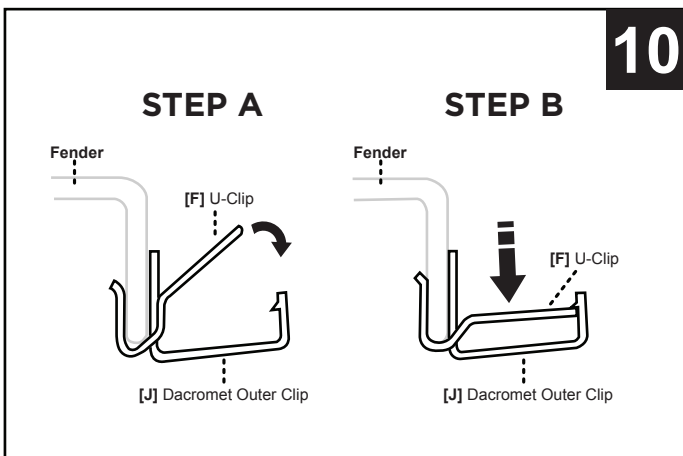
8. Insert U-Clip [F] into Decromet Outer Clip [J] as shown into a Big Clip.  
NOTE: DO NOT press U-Clip down until STEP 9

9



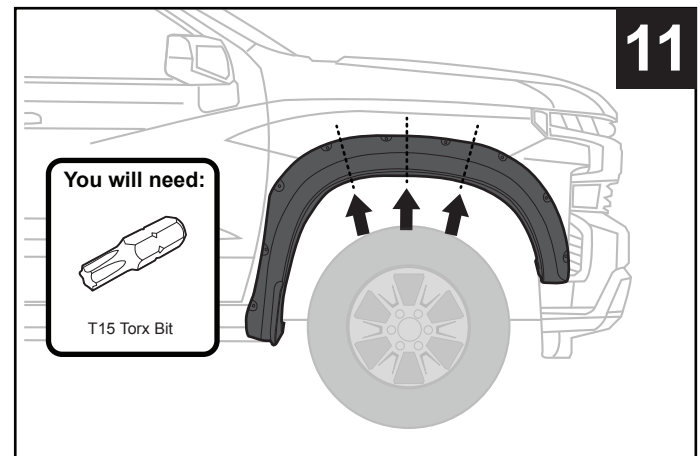
9. Without Flare, apply supplied Clear Tab [L] over the front marked location in STEP 6. Install assembled Big Clip over tab. See STEP 10 for details.

10



10. Push U-Clip [F] down into the outer clip until it "clicks" into place. Pliers may be needed to squeeze clips into position.

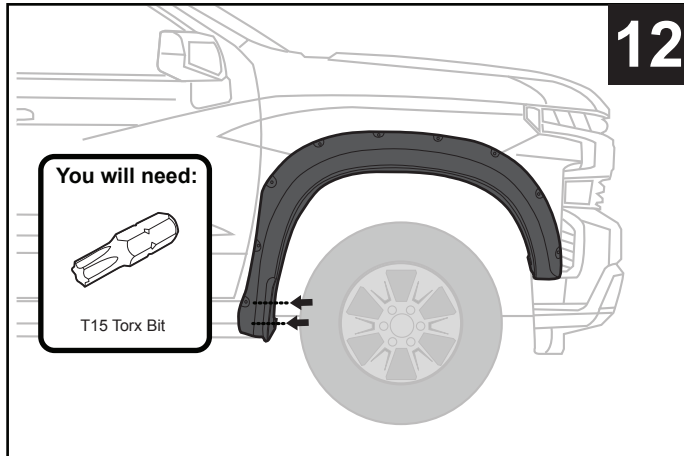
11



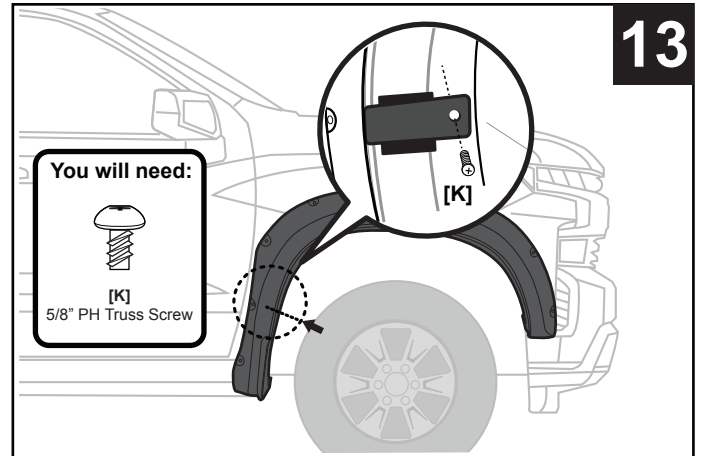
11. Press flare into position against vehicle and reinstall 3 removed factory screws from STEP 4 with a T15 Bit. NOTE: DO NOT tighten.



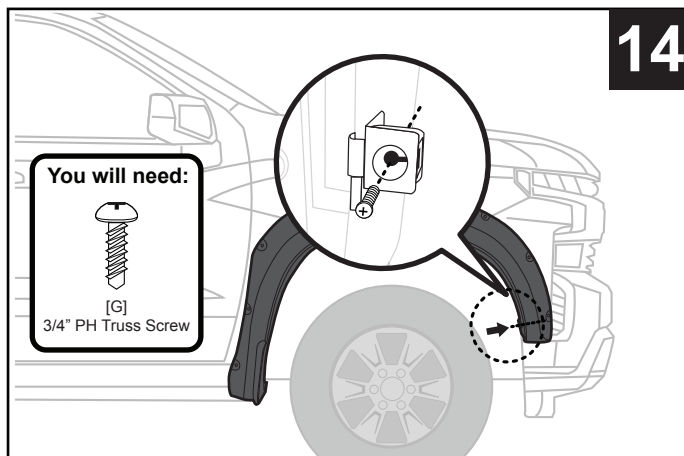
# TYGER®



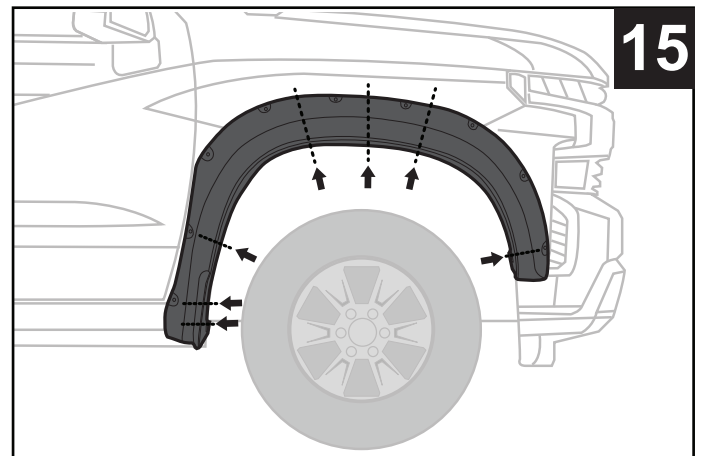
12. Reinstall 2 removed factory screws from **STEP 2** with T15 bit. **NOTE: DO NOT tighten.**



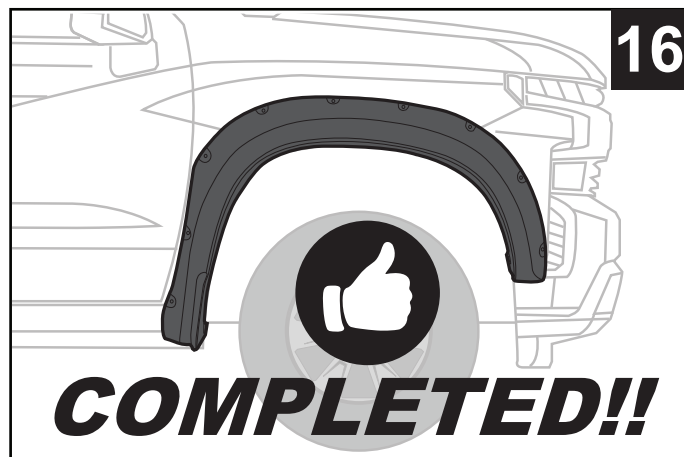
13. Install 1 supplied 5/8" PH Truss Screw [K] to rear clip hole from **STEP 7**. **NOTE: DO NOT tighten and use awl to help with flare alignment**



14. Install 1 supplied 3/4" PH Tapping Screw [G] at front Clip hole from **STEP 9**. **NOTE: DO NOT tighten and use awl to help with flare alignment**



15. Push flare against vehicle and tighten all screws.

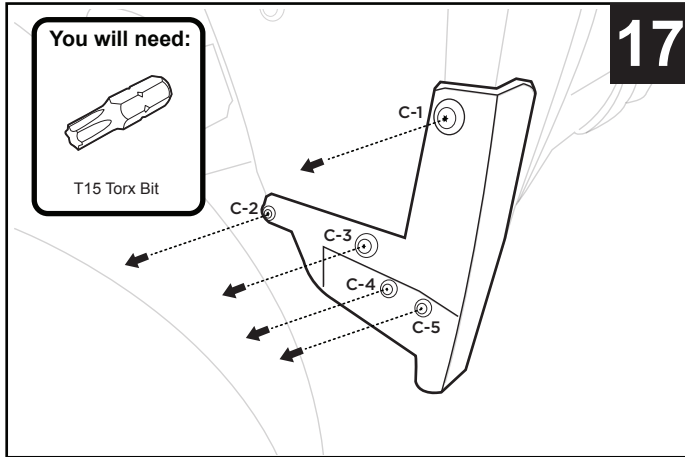


16. Repeat **STEPS 1-15** for driver side front flare.

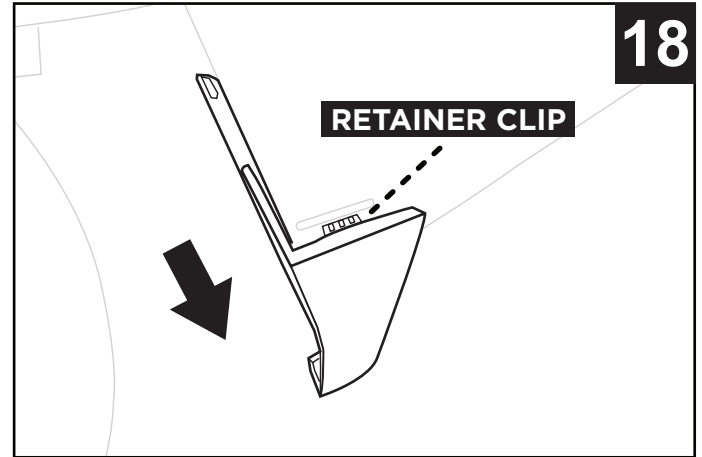


# TYGER<sup>®</sup>

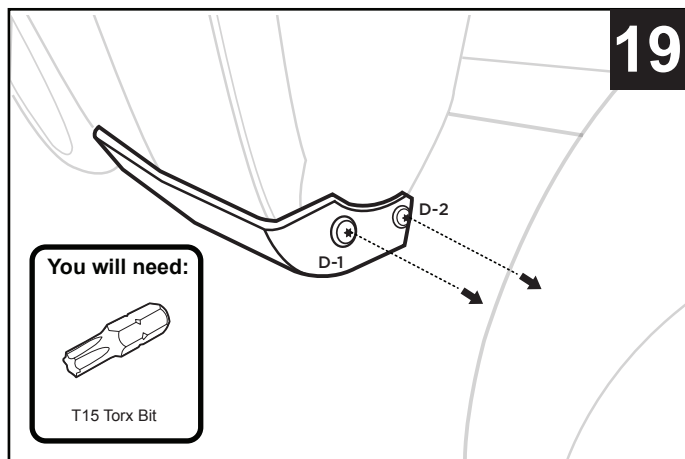
## REAR FLARES INSTALLATION



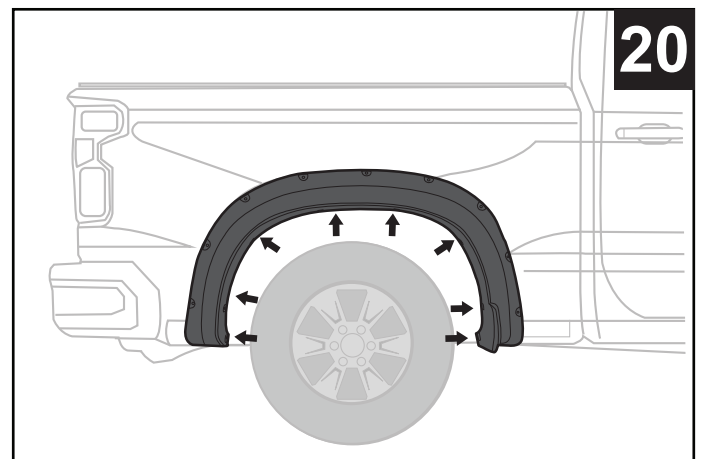
17. For the rear wheel well, frontward factory mud flap, remove 5 factory installed T15 screws with a Torx bit.  
NOTE: Screws in C-1 & C-3 positions will be reinstalled in STEP 25.



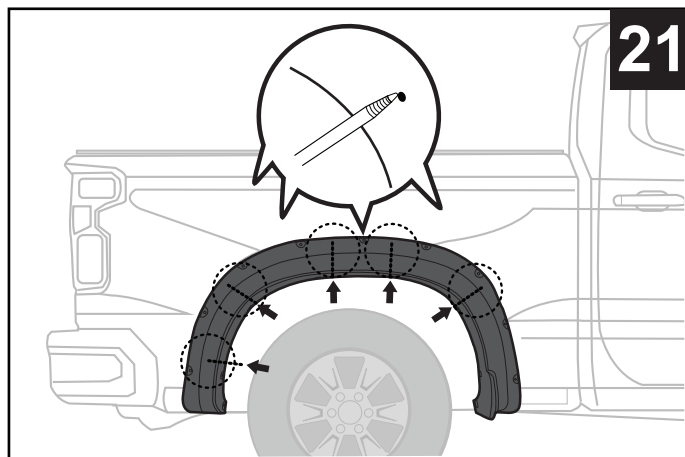
18. Carefully pull flap away to detach the retainer clip. Remove flap. If needed, use pliers to help grip and remove clip from the rear.



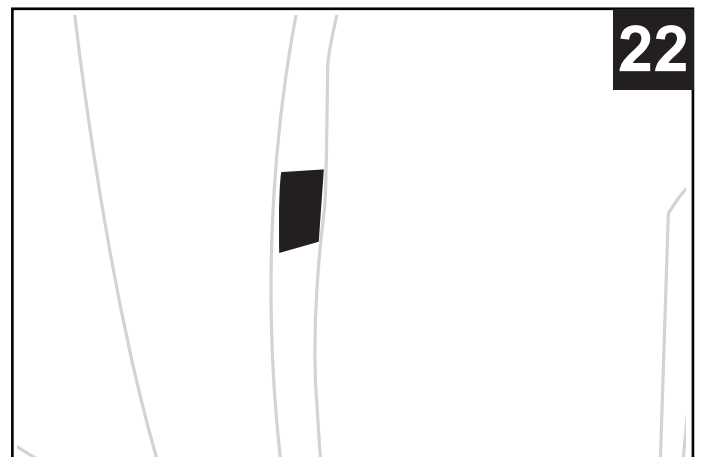
19. For the rearward factory mud flap, remove 2 factory installed T15 screws with a Torx bit. NOTE: D-2 screw position will be reinstalled in STEP 25.



20. Press flare against vehicle to line up flare and vehicle screw holes.



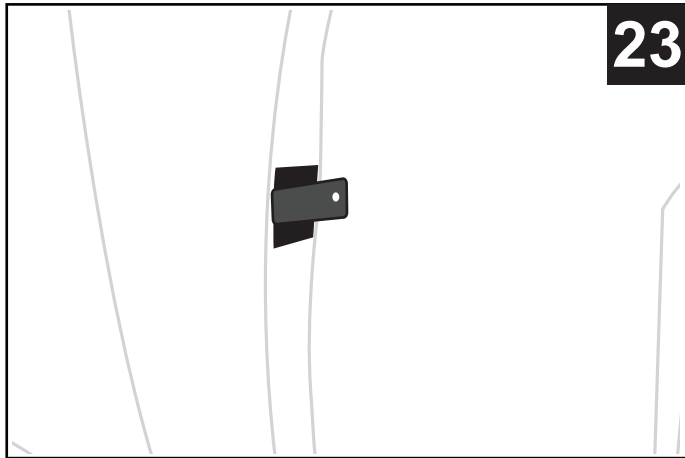
21. With grease pencil, mark 5 screw holes position indicated by diagram. Set aside the flare for now.



22. Apply supplied Mylar Tab [H] at each marked location in STEP 21.

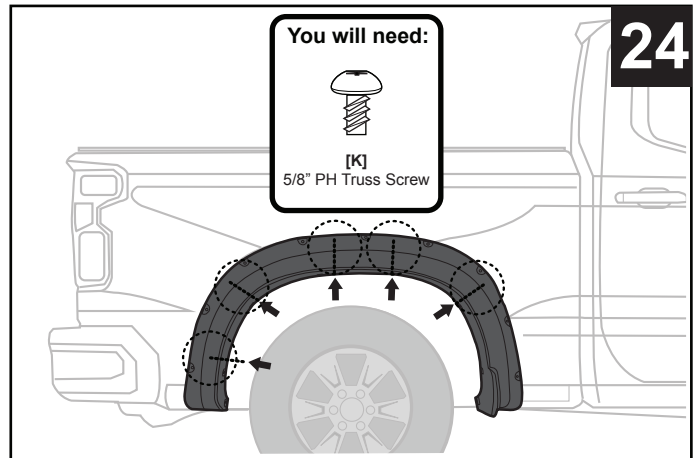


# TYGER®



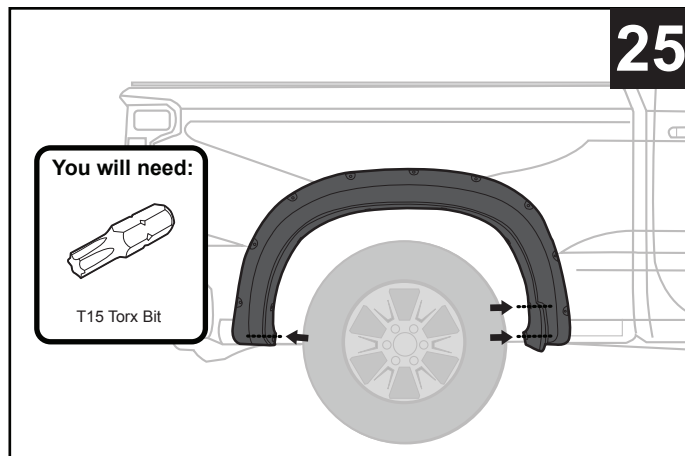
23

23. Install 1 supplied Long U-Clip [I] for each of the 5 Mylar Tab locations in STEP 22.



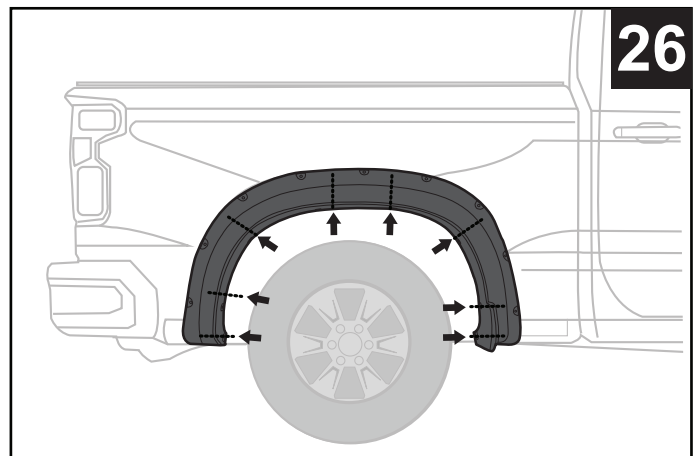
24

24. Push flare against vehicle and install 5 supplied 5/8" PH Truss Screw [K] into each clip location. NOTE: DO NOT tighten and use awl to help with flare alignment.



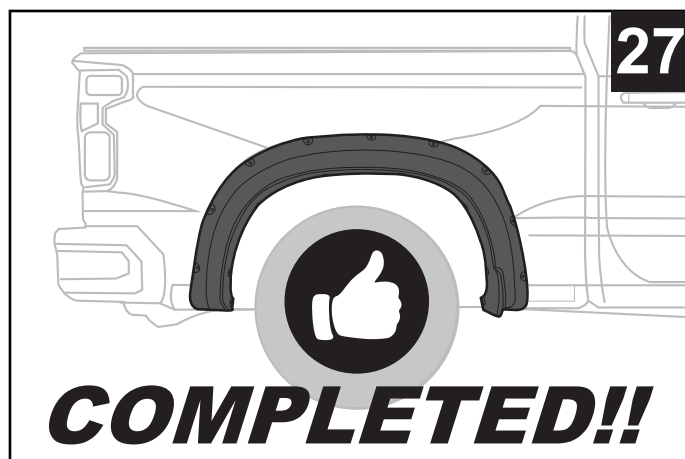
25

25. Reinstall 3 factory T15 screws removed from STEPS 17 & 19 as shown. NOTE: DO NOT tighten.



26

26. Push flare against vehicle and tighten all screws.



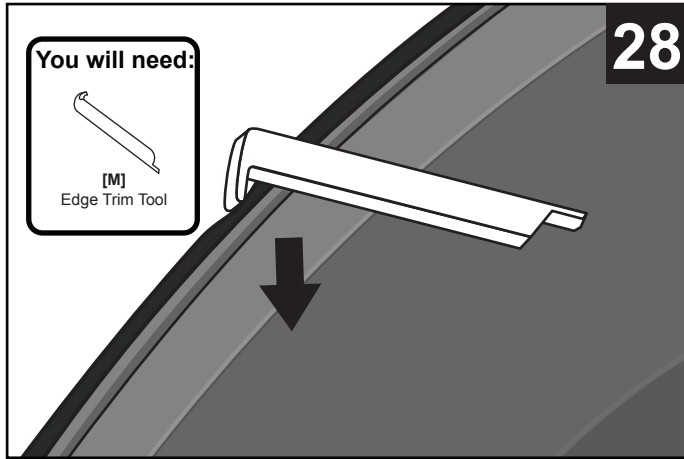
27

27. Repeat STEPS 17-26 for driver side front flare.

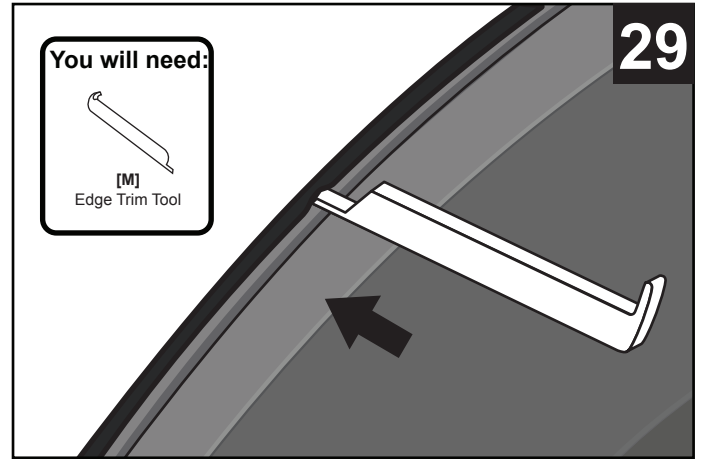


# TYGER<sup>®</sup>

## EDGE TRIM TOOL USAGE (OPTIONAL):

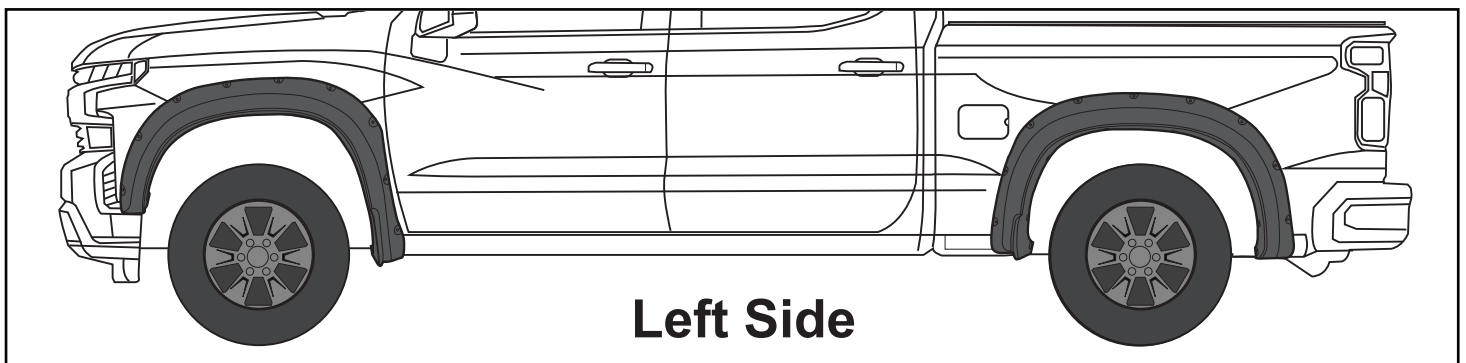
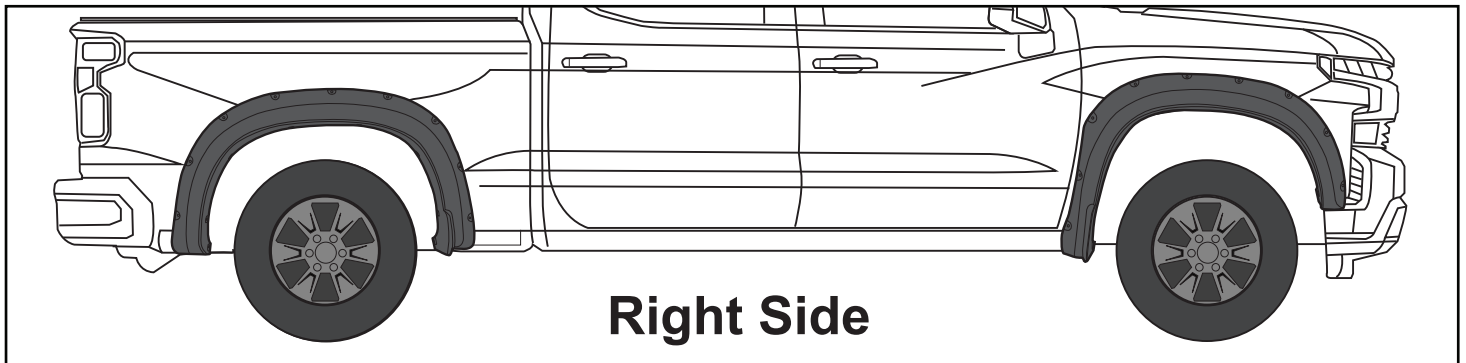


28. If needed, use supplied Edge Trim Tool [M] to trim outer edge by inserting the curved end, then sliding around the entire trim from one end to the other.



29. If needed, use supplied Edge Trim Tool [M] to trim inner edge by inserting the straight end, then sliding around the entire trim from one end to the other.

## FINAL COMPLETED EFFECTS



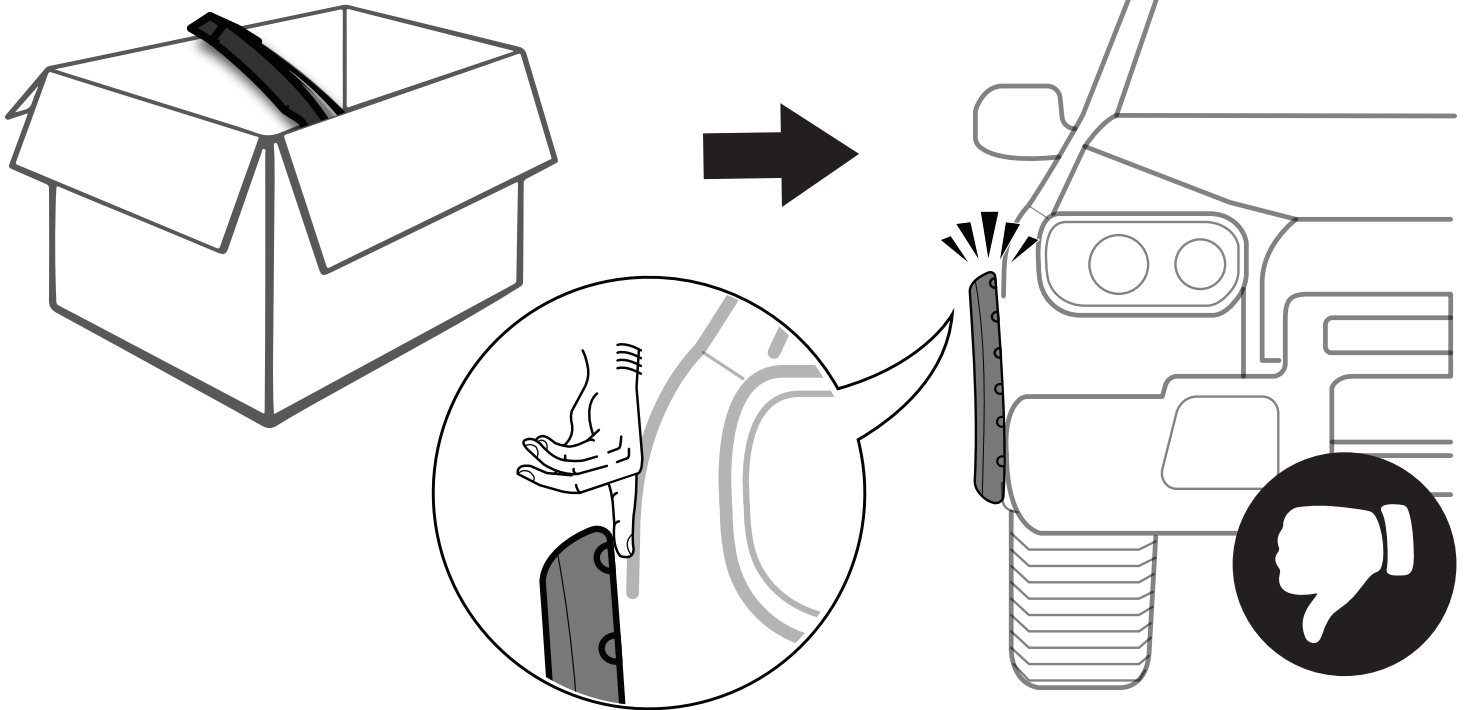
**NOTE:**

Above images are for reference ONLY, final result may vary.

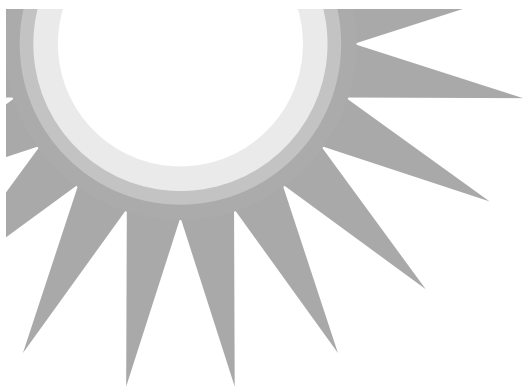


# TYGER<sup>®</sup>

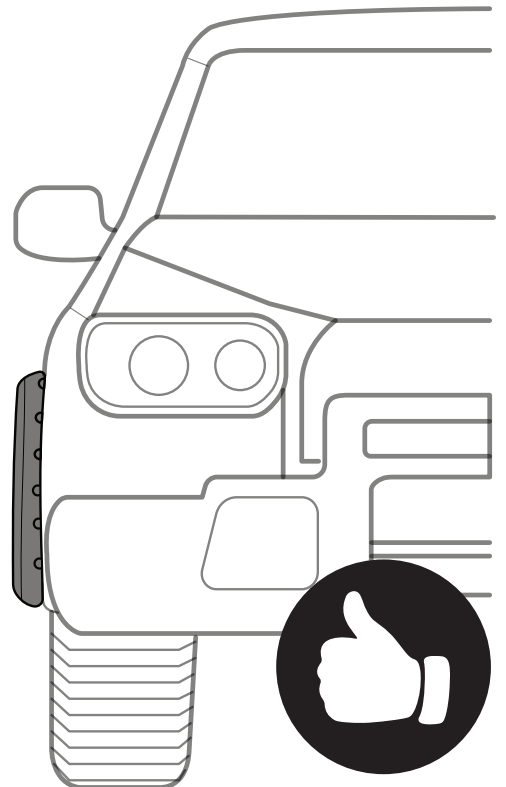
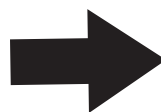
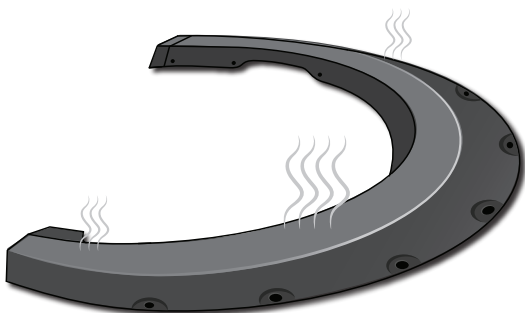
## FITMENT OR GAP ISSUE?



## SOLUTION!



AFTER  
**2-3**  
HOURS



\*In winter, heat gun or hair dryer may be used instead.