



TYGER®

FENDER FLARE

TG-FF8T4358



ATTENTION!

PLEASE READ THE INSTRUCTIONS CAREFULLY BEFORE STARTING INSTALLATION. PLEASE FOLLOW THE APPROVED INSTALLATION ACCORDING TO THE WRITTEN INSTRUCTIONS. FAILURE TO DO SO MAY CAUSE DAMAGE TO YOUR VEHICLE AND INVALIDATE THE WARRANTY.



WARNING!

PARTICLES & DIRT STUCK BETWEEN INSTALLED FLARES AND VEHICLE'S FENDERS MAY CAUSE SCRATCHING AND PAINT WEAR FROM VEHICLE VIBRATION. INSTALLATION IS DONE WITH BUYER'S AND/OR USER'S UNDERSTANDING THAT THIS DAMAGE MAY POTENTIALLY OCCUR. TYGER™ IS NOT RESPONSIBLE FOR ANY DAMAGE FROM THIS CAUSE.

PRIOR TO INSTALLATION:



CHECK EVERYTHING BEFORE INSTALLATION



USE NON-ABRASIVE SURFACE TO INSTALL



VERIFY FITMENT OF FLARES TO VEHICLE



REMOVE DECALS & MUD FLAPS FIRST



ABRASIVE DETERGENT IS PROHIBITED

ABOUT PAINTING:



NO RETURN FOR PAINTED ITEMS



NO SOLVENT CLEAN ALLOWED



DRY IT OUT BEFORE PAINT



ADHESION PROMOTER IS REQUIRED



USE HIGH QUALITY AUTOMOTIVE PAINT



USE FLEX ADDITIVE FOR EDGE PAINT

SAFETY INFORMATION:



NO AUTOMATIC BRUSH-STYLE WASH



CHECK TIGHTNESS



CHECK CAREFULLY BEFORE DRIVE

TOOLS FOR EASIER INSTALLATION



Utility Knife



Soft Wiping Cloth



Pry Tool



10mm Socket



Socket Wrench



Electric Drill



5/16" Drill Bit



1/8" Drill Bit



1/2" Wrench



#2 Phillips Driver



Grease Pencil



Work Gloves

HARDWARE KIT INCLUDED

x338



[A] Edge Trim

x31



[B] Torx Bolt

x35



[C] SS Washer

x33



[D] Nylock Nut

x1



[E] T45 Torx Bit

x4



[G] PH Truss Screw

x2



[K] SS Torx Screw

x12



[L] Nylon Retainer

x1



[M] Edge Trim Tool



x1
Driver Side



x1
Driver Side



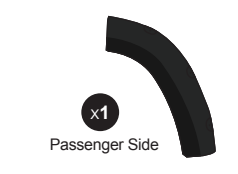
x1
Passenger Side



x1
Passenger Side



x1
Driver Side



x1
Passenger Side

DAMAGED or MISSING parts?

www.TygerAuto.com/Contact





TYGER®

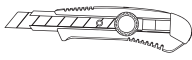
EDGE TRIM INSTALLATION

- Peel 2 to 3" of red vinyl backing away from one end of the **Edge Trim [A]** .
- Apply **Edge Trim [A]** over top edge of flare with adhesive side contacting inside edge of flare.
- Press **Edge Trim [A]** into place and apply thumb pressure to ensure good adhesion, pull away red backing as you work your way around flare edge in one-foot increments.

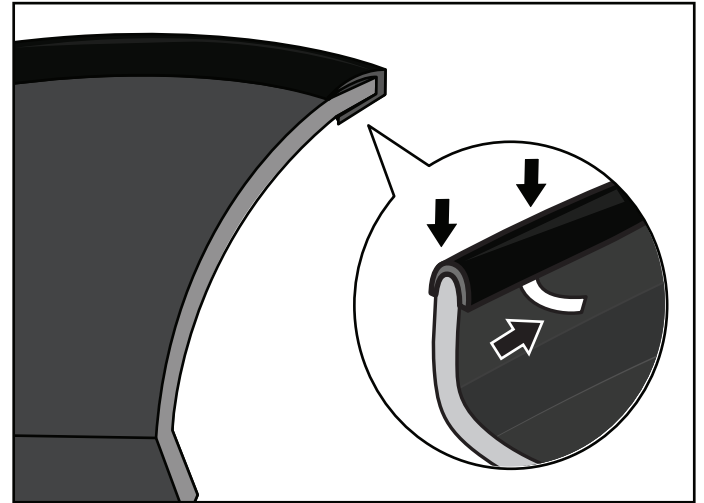
You will need:



Edge Trim [A]



Utility Knife



NOTE!

DO NOT stretch Edge Trim during application.

DECORATIVE RIVET INSTALLATION

- Put a **Torx Bolt [B]** with a **Washer [C]** through each of the top holes around the flare and using a **Nylock Nut [D]** to secure on the other side. Using a socket wrench and the supplied **Torx Bit [E]** on an electric drill to tighten bolts. **DO NOT** over-tighten as this may damage the flare.

You will need:



[B]
Torx Bolt



[C]
SS Washer



[D]
Nylock Nut



[E]
T45 Torx Bit



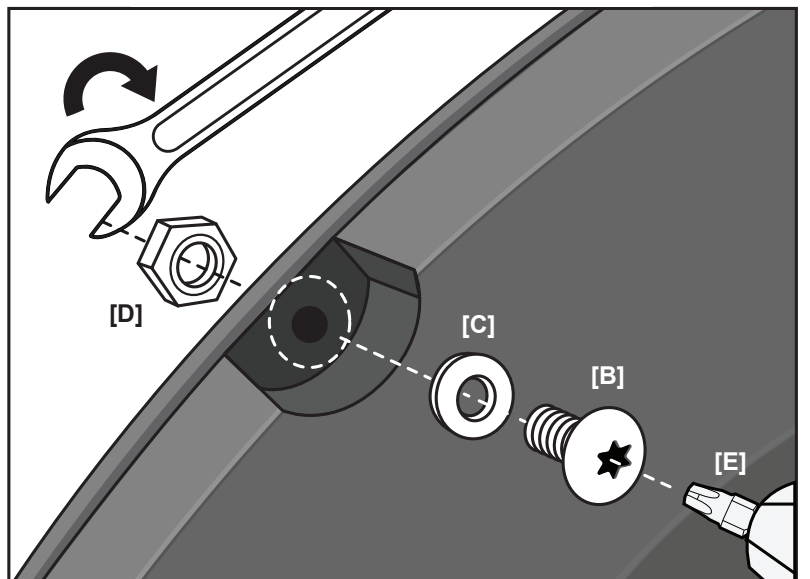
1/2"
Wrench



Electric Drill

NOTE!

- **DO NOT** drill holes on the vehicle body as rivets are decorative and fasten only to the flare. Do not attempt to use the bolts to fasten flare to vehicle body.
- All exposed fasteners and bare metal should be treated with rust resistant paint before installing flares, Spray inner fender wells with undercoating after flare installation
- For vehicle with large tires may require lowering bump stops and/or installing steering stops to prevent tire from contacting flares
- Modification may be necessary to maintain a minimum 4" clearance between flares and exhaust pipes. (Exhaust gases should not vent directly onto flares)





TYGER®

FRONT FLARES INSTALLATION



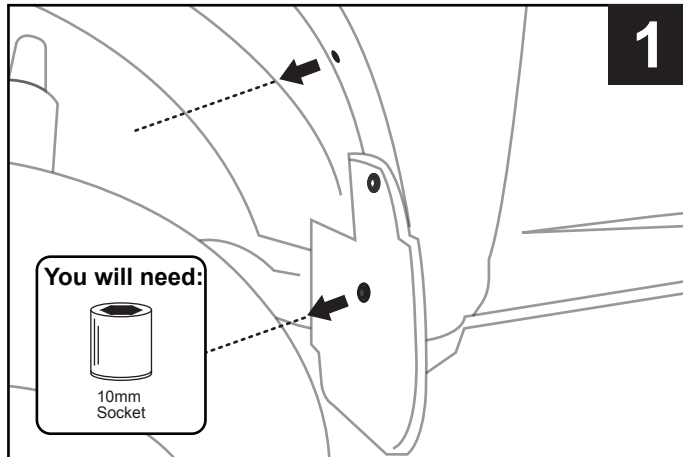
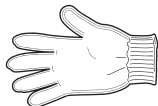
NOTE!

PLEASE USE APPROPRIATE TOOLS TO CLEAN THE VEHICLE IF IT IS NECESSARY, DRY IT OUT BEFORE YOU START THE INSTALLATION.

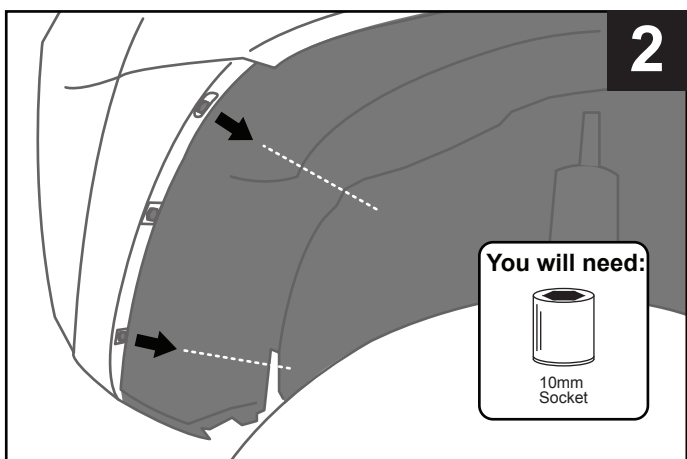


ATTENTION!

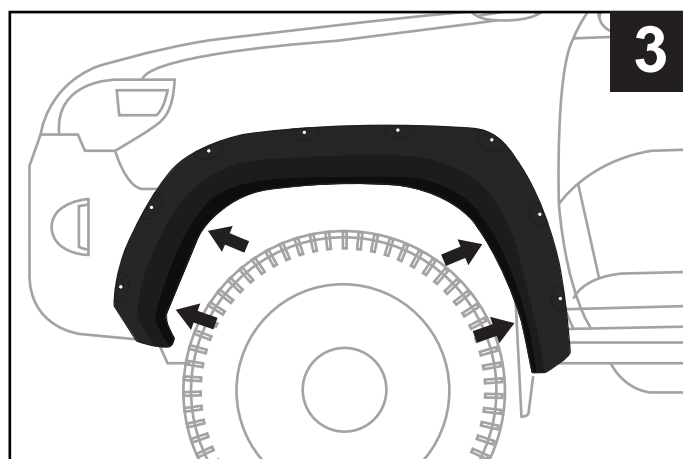
SOME COMPONENTS MIGHT BE SHARP, FOR SAFETY CONCERNS, PLEASE WEAR GLOVES DURING THE INSTALLATION FOR PROTECTION IF IT IS NEEDED.



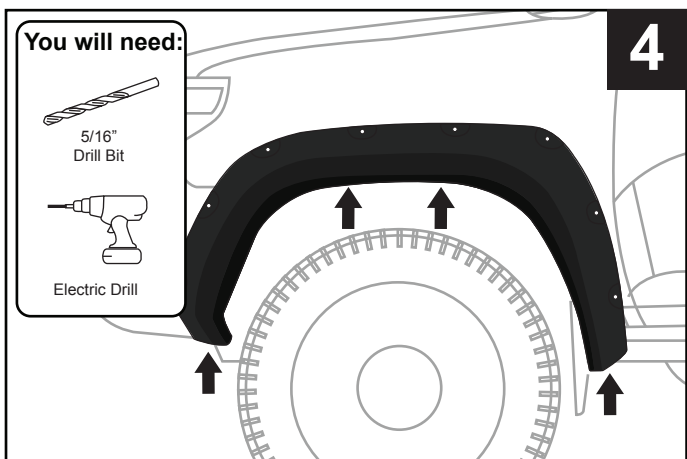
1. Begin at REARWARD end of FRONT wheel well. Remove 2 factory screws. Keep both screws for flare installation. **DO NOT** remove factory mud flaps.



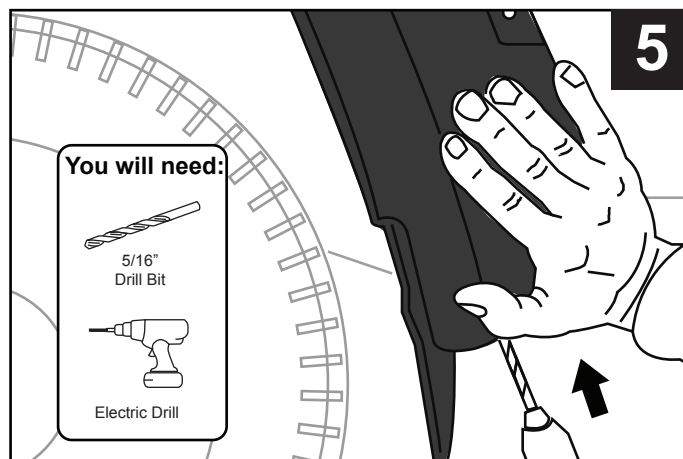
2. At FRONTWARD end of FRONT wheel well. Remove 2 factory fasteners. Keep both fasteners for flare installation. **Note:** fasteners removed in STEP 2 are smaller in diameter than screws removed from STEP 1.



3. Secure Front Flare against Fender. Reinstall 2 kept factory screws through flare and into same 2 REARWARD factory holes from STEP 1 and tighten. Likewise, reinstall 2 kept factory fasteners through flare and into same 2 FRONTWARD factory holes from STEP 2.



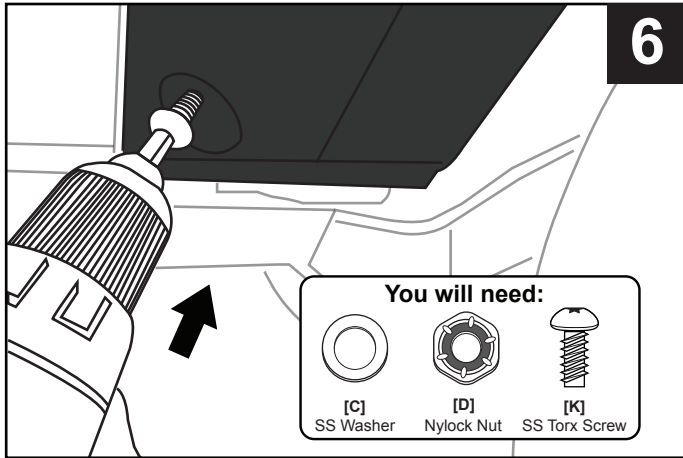
4. Locate 4 flare holes shown above. With a 5/16" bit, drill through each flare hole into the plastic.



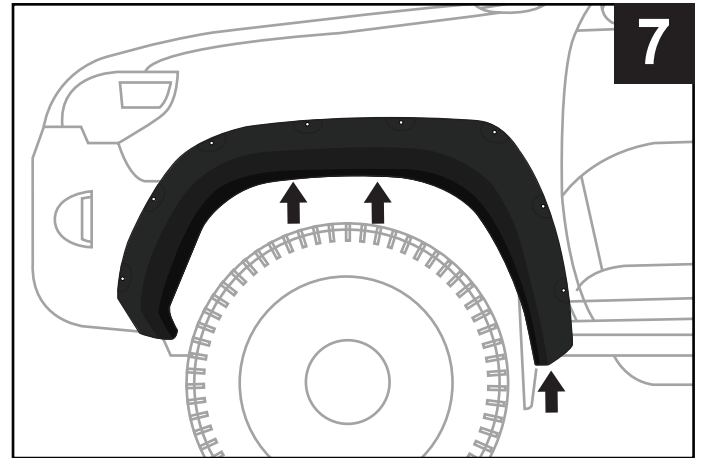
5. **FOR BETTER FIT:** while drilling the 2 bottom holes from STEP 4, firmly press flare against fender and in towards the wheel well.



TYGER®



6. Install 1 supplied SS Torx Screw [K] with 1 supplied Washer [C] for BOTTOM FRONT drilled flare hole. Then to fasten screw, install 1 Washer first then 1 Nylock Nut [D] onto screw from the backside. Tighten nut with 1/2" wrench.

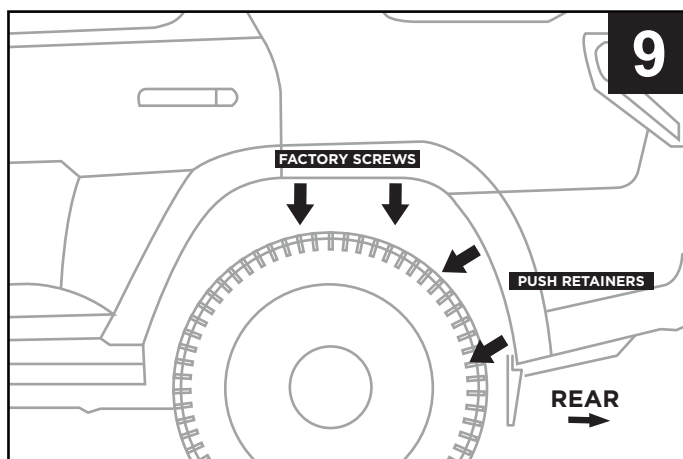


7. Install 3 supplied Nylon Retainers [L] through each of 3 remaining drilled flare holes from STEP 4. FOR BETTER FIT, apply up and/or inward pressure as needed on each screw location then tighten the screws.

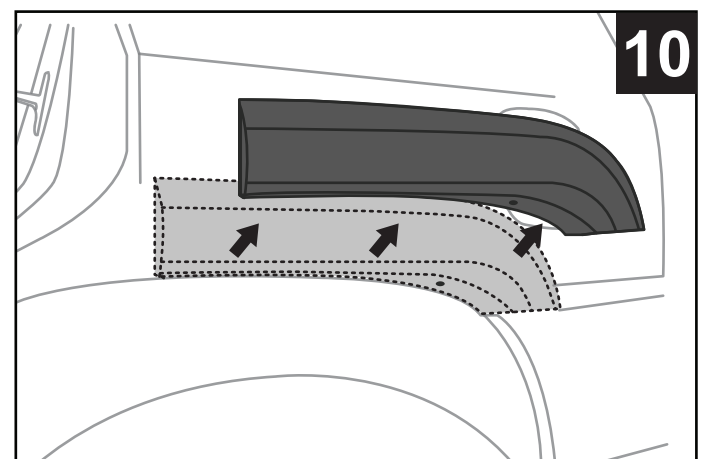


8. Installation complete. Repeat STEPS 1-8 for the other side.

REAR MAIN FLARES INSTALLATION



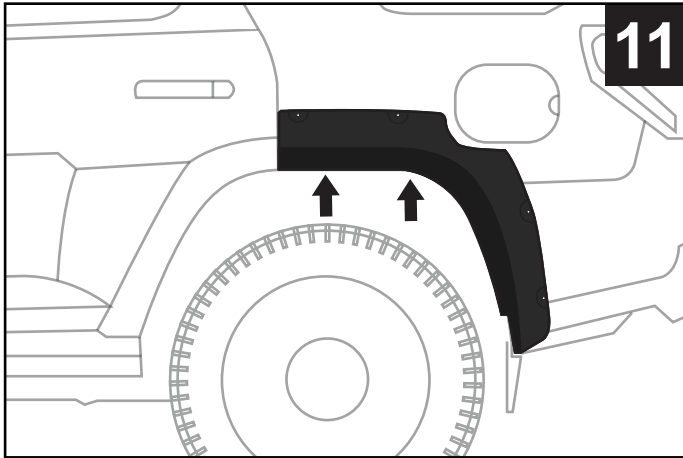
9. Remove 2 top factory screws and 2 factory push retainers from the REAR MAIN factory flare ONLY. Keep factory screws for reinstallation. Discard factory retainers.



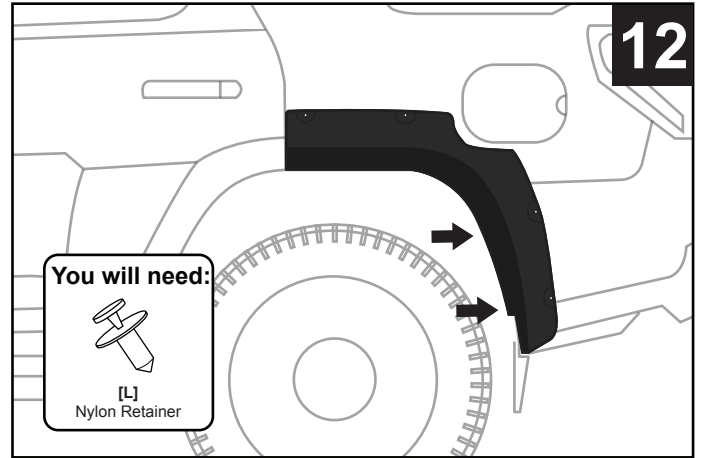
10. Remove factory REAR MAIN flare (horizontal piece) by pulling the part away from the clips on both ends of the part. Then grab onto wheel well and pull off factory flare.



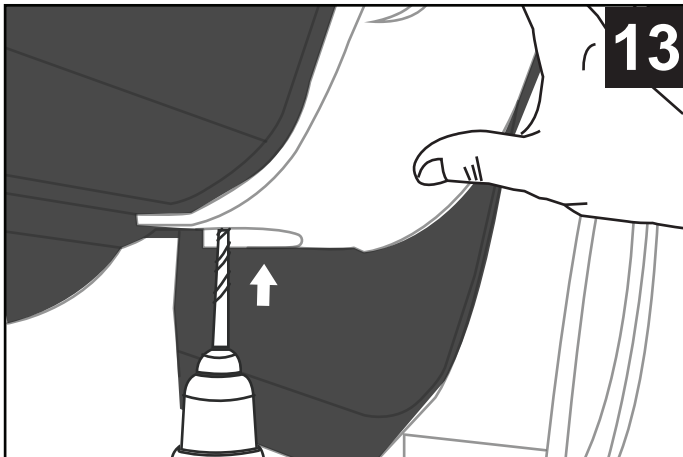
TYGER®



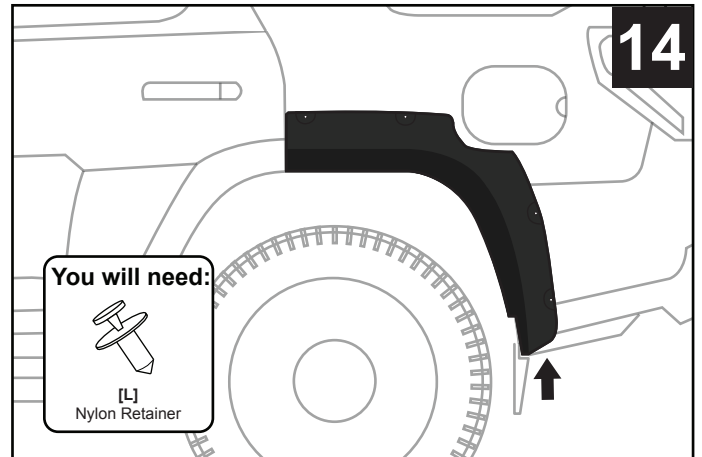
11. Position flare against vehicle and install 2 kept factory screws into 2 TOP factory holes through flare. FOR BETTER FIT, ensure flare is positioned properly and apply inward pressure on flare at each screw location while tightening each screw.



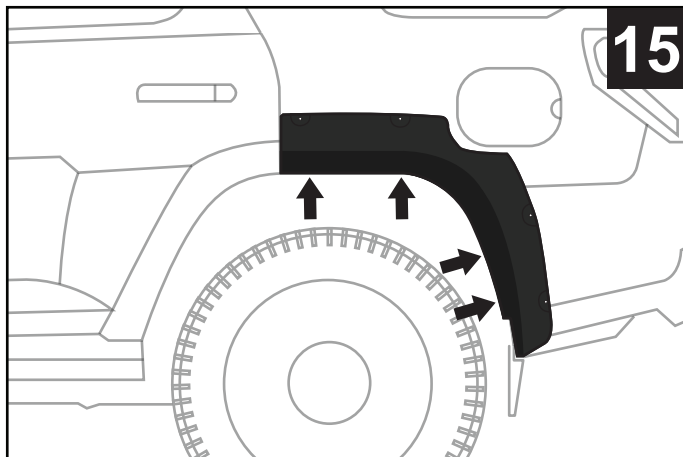
12. Install 2 supplied Nylon Retainers [L] through into each LOWER holes from STEP 9.



13. With a 5/16" bit, drill hole through bottom-rear flare hole location. FOR BETTER FIT: Press flare inward against fender as you drill.



14. Install 1 supplied Nylon Retainer [L] into drilled hole from STEP 13 through flare.

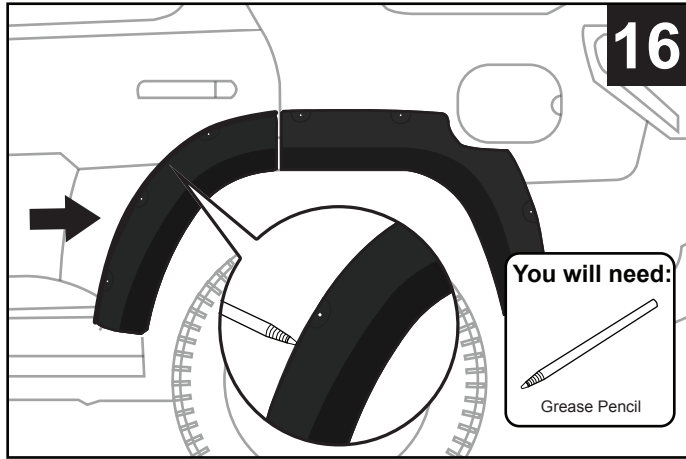


15. Before you begin tightening screws installed in STEP 11, press flare inward at each screw position as needed to ensure better fit.

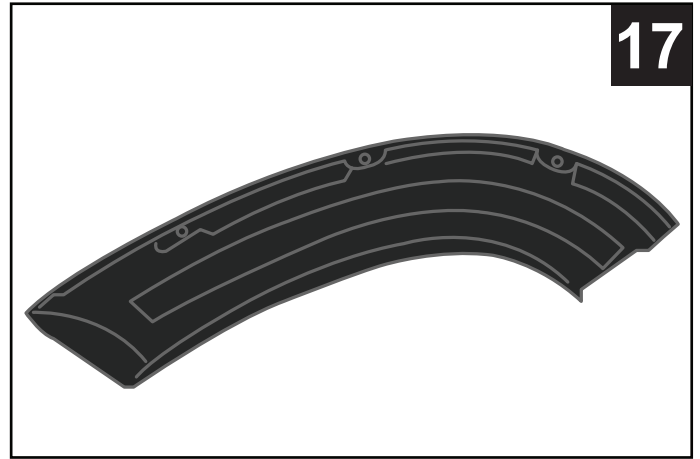


TYGER[®]

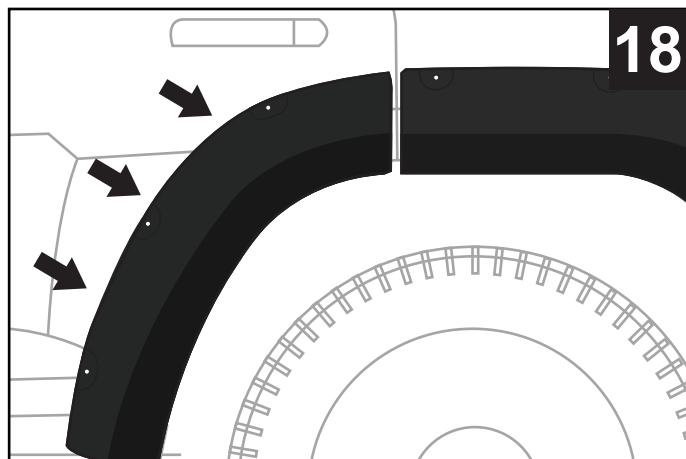
REAR DOOR PIECE INSTALLATION



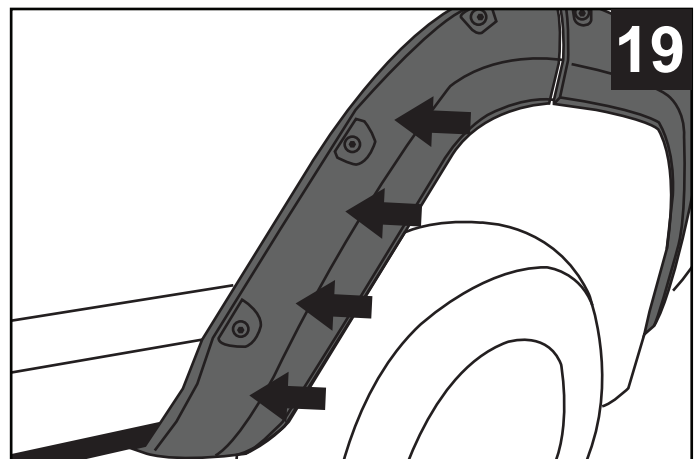
16. Prior to installing door piece, first clean installation surface on vehicle. Then, secure flare into optimal position against vehicle. With a grease pencil, trace a line along the outer edge of the flare. Line will be the installed position guide - **DOOR FLARE WILL BE TAPED TO THE VEHICLE AND CANNOT BE REMOVED OR ADJUSTED POSITIONALLY.**



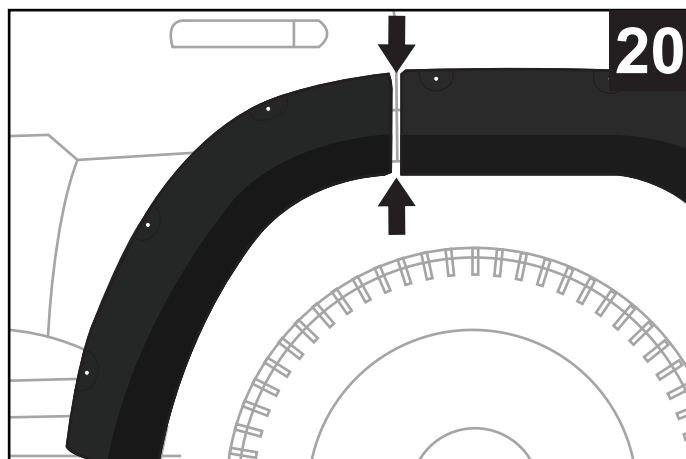
17. Remove all tape liners on the back of door flare.



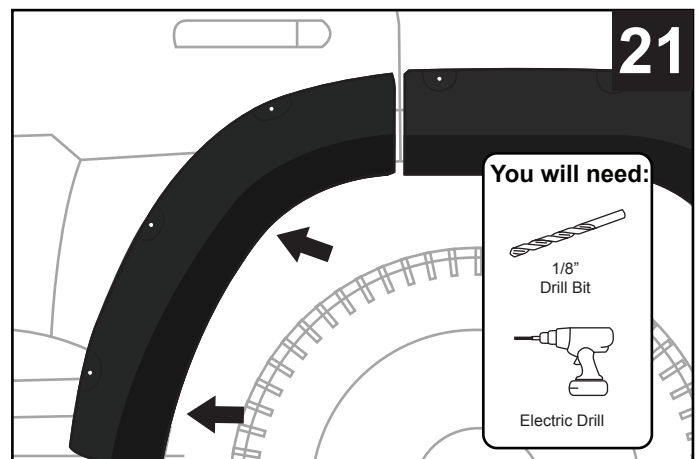
18. Position flare along line traced in **STEP 16** then press flare against factory door and flare surfaces into optimal position.



19. Apply pressure (PSI 30) evenly across the entire installation surface to ensure full adhesion. Maximum bonding is reached **24 hrs** after installation.



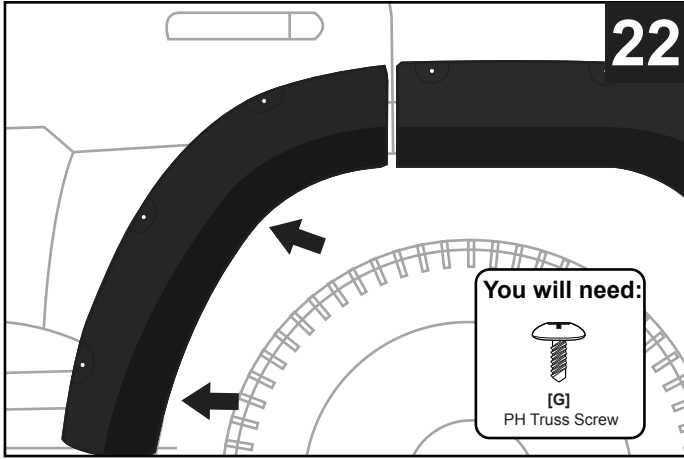
20. Adjust and line up door flare against rear flare before drilling.



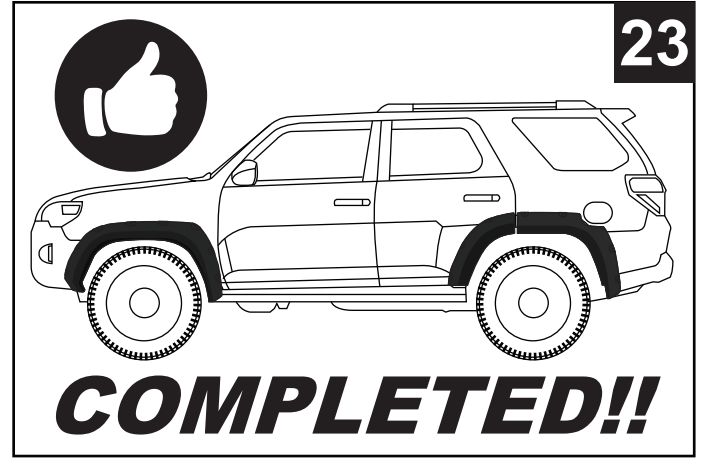
21. Secure top of door flare and drill 2 pilot holes into flare at the indicated position. Holes are drilled into the thin surface of flare.



TYGER[®]

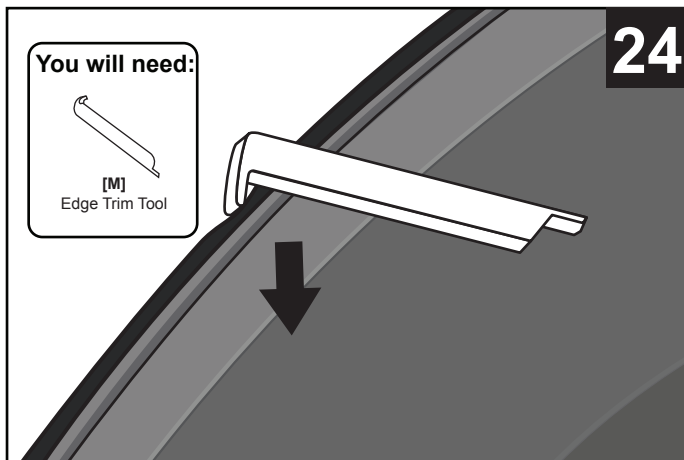


22. Install 2 supplied PH Truss Screws [G] into each drilled pilot holes from STEP 21. Screws should thread into factory flare but **DO NOT** over tighten them.

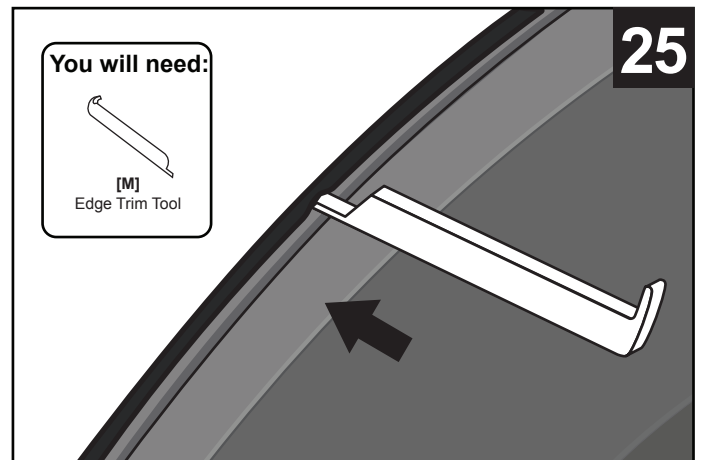


23. Installation Complete.

EDGE TRIM TOOL USAGE (OPTIONAL):



24. If needed, use supplied Edge Trim Tool [M] to trim outer edge by inserting the curved end, then sliding around the entire trim from one end to the other.

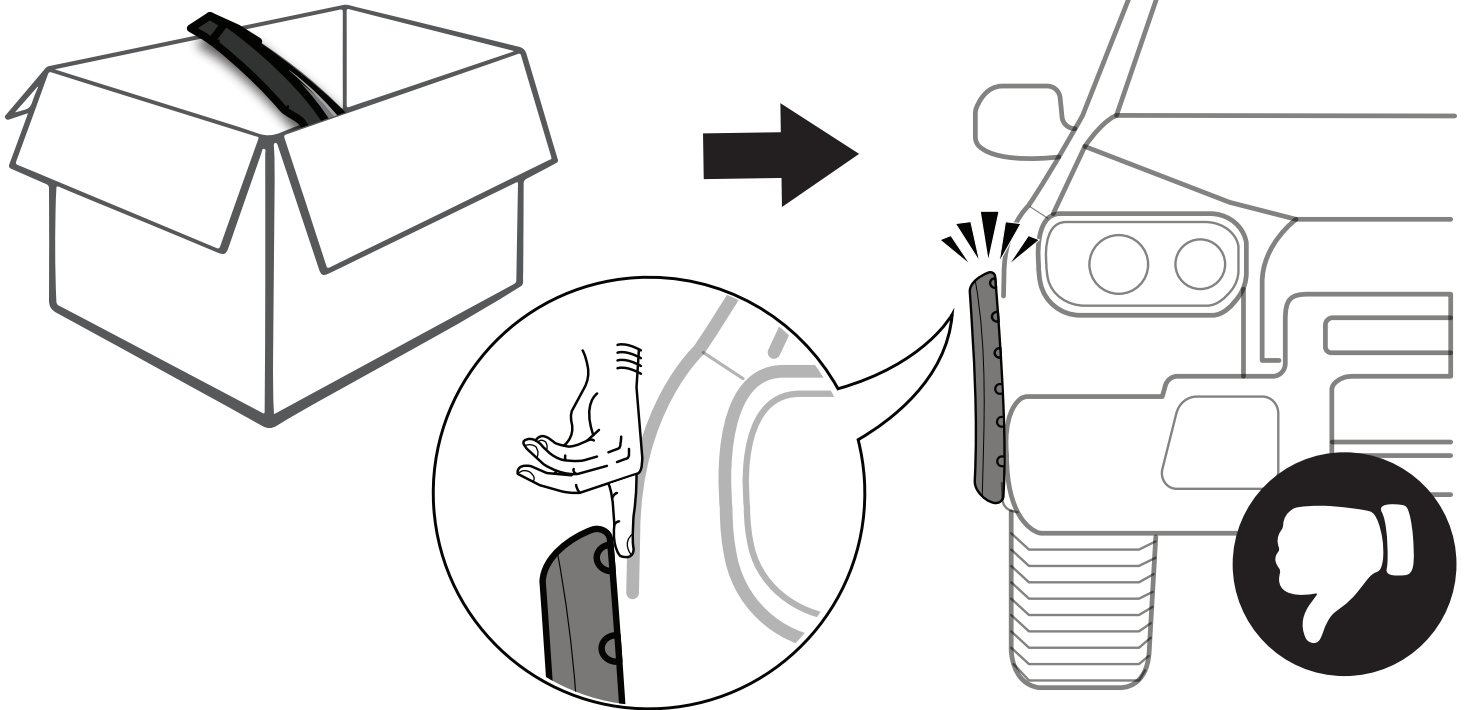


25. If needed, use supplied Edge Trim Tool [M] to trim inner edge by inserting the straight end, then sliding around the entire trim from one end to the other.

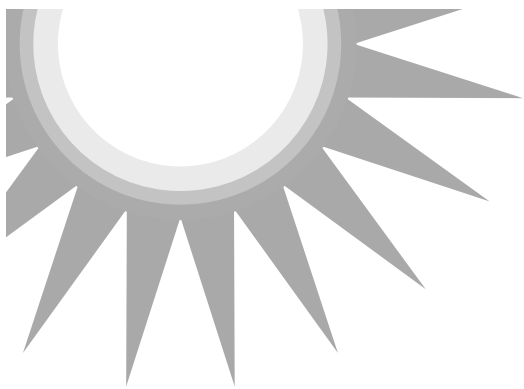


TYGER[®]

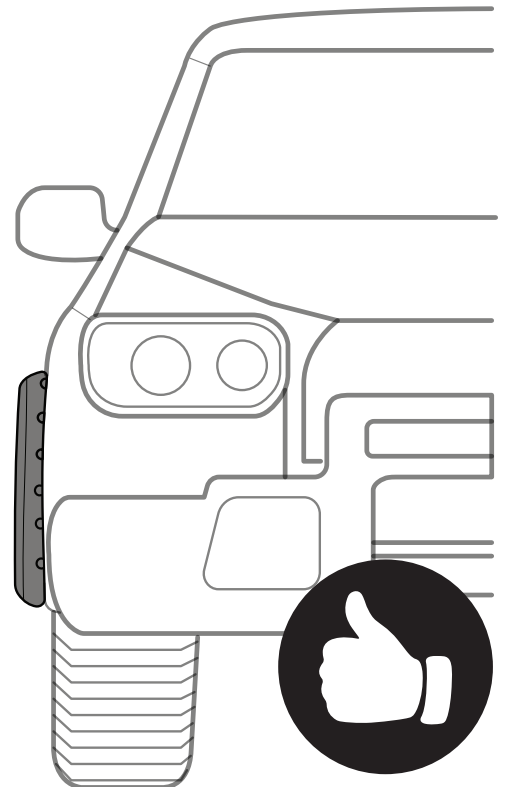
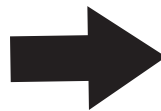
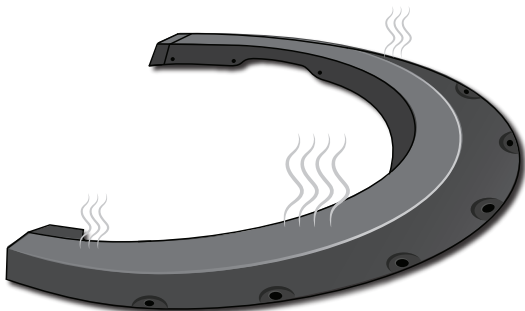
FITMENT OR GAP ISSUE?



SOLUTION!



AFTER
2-3
HOURS



*In winter, heat gun or hair dryer may be used instead.