



TYGER®

FENDER FLARE

TG-FF8T4398



ATTENTION!

PLEASE READ THE INSTRUCTIONS CAREFULLY BEFORE STARTING INSTALLATION. PLEASE FOLLOW THE APPROVED INSTALLATION ACCORDING TO THE WRITTEN INSTRUCTIONS. FAILURE TO DO SO MAY CAUSE DAMAGE TO YOUR VEHICLE AND INVALIDATE THE WARRANTY.



WARNING!

PARTICLES & DIRT STUCK BETWEEN INSTALLED FLARES AND VEHICLE'S FENDERS MAY CAUSE SCRATCHING AND PAINT WEAR FROM VEHICLE VIBRATION. INSTALLATION IS DONE WITH BUYER'S AND/OR USER'S UNDERSTANDING THAT THIS DAMAGE MAY POTENTIALLY OCCUR. TYGER™ IS NOT RESPONSIBLE FOR ANY DAMAGE FROM THIS CAUSE.

PRIOR TO INSTALLATION:



CHECK EVERYTHING BEFORE INSTALLATION



USE NON-ABRASIVE SURFACE TO INSTALL



VERIFY FITMENT OF FLARES TO VEHICLE



REMOVE DECALS & MUD FLAPS FIRST

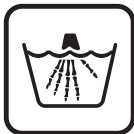


ABRASIVE DETERGENT IS PROHIBITED

ABOUT PAINTING:



NO RETURN FOR PAINTED ITEMS



NO SOLVENT CLEAN ALLOWED



DRY IT OUT BEFORE PAINT



ADHESION PROMOTER IS REQUIRED



USE HIGH QUALITY AUTOMOTIVE PAINT



USE FLEX ADDITIVE FOR EDGE PAINT

SAFETY INFORMATION:



NO AUTOMATIC BRUSH-STYLE WASH

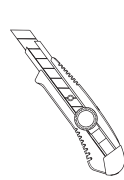


CHECK TIGHTNESS

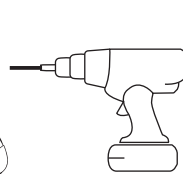


CHECK CAREFULLY BEFORE DRIVE

TOOLS FOR EASIER INSTALLATION



Utility Knife



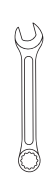
Electric Drill



Awl



#2 Phillips Driver



1/2" Wrench



Socket Wrench



1/2" Socket



10mm Socket



Grease Pencil



Work Gloves

HARDWARE KIT INCLUDED



[A] Edge Trim



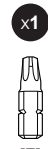
[B] Torx Bolt



[C] SS Washer



[D] Nylock Nut



[E] T45 Torx Bit



[F] Hex Magni Screw



[G] Mylar Tab



[H] U-Clip



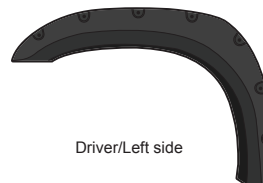
[I] PH Truss Screw



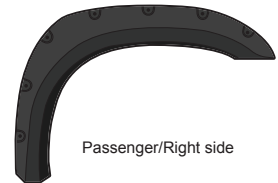
[J] Screw Nylon Grommet



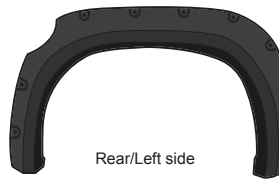
[K] Edge Trim Tool



Driver/Left side



Passenger/Right side



Rear/Left side



Rear/Right side

DAMAGED or MISSING parts?

www.TygerAuto.com/Contact





TYGER®

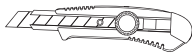
EDGE TRIM INSTALLATION

- Peel 2 to 3" of red vinyl backing away from one end of the **Edge Trim [A]**.
- Apply **Edge Trim [A]** over top edge of flare with adhesive side contacting inside edge of flare.
- Press **Edge Trim [A]** into place and apply thumb pressure to ensure good adhesion, pull away red backing as you work your way around flare edge in one-foot increments.

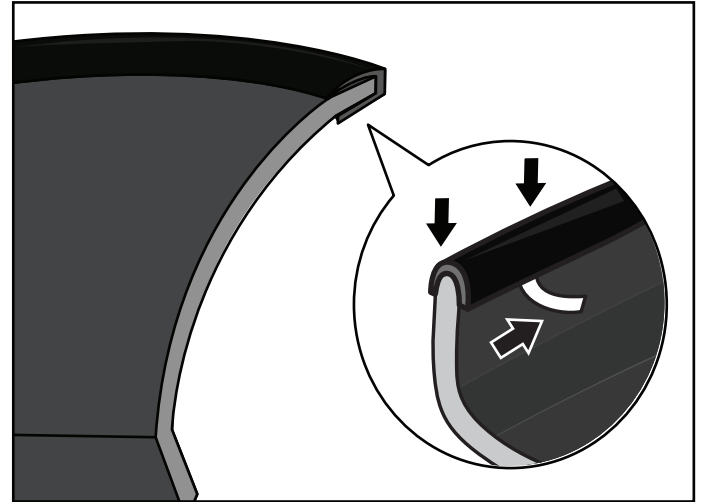
You will need:



Edge Trim [A]



Utility Knife



NOTE!

DO NOT stretch Edge Trim during application.

DECORATIVE RIVET INSTALLATION

- Put a **Torx Bolt [B]** with a **Washer [C]** through each of the top holes around the flare and using a **Nylock Nut [D]** to secure on the other side. Using a socket wrench and the supplied **Torx Bit [E]** on an electric drill to tighten bolts. **DO NOT** over-tighten as this may damage the flare.

You will need:



[B]
Torx Bolt



[C]
SS Washer



[D]
Nylock Nut



[E]
T45 Torx Bit



1/2"
Wrench



Electric Drill

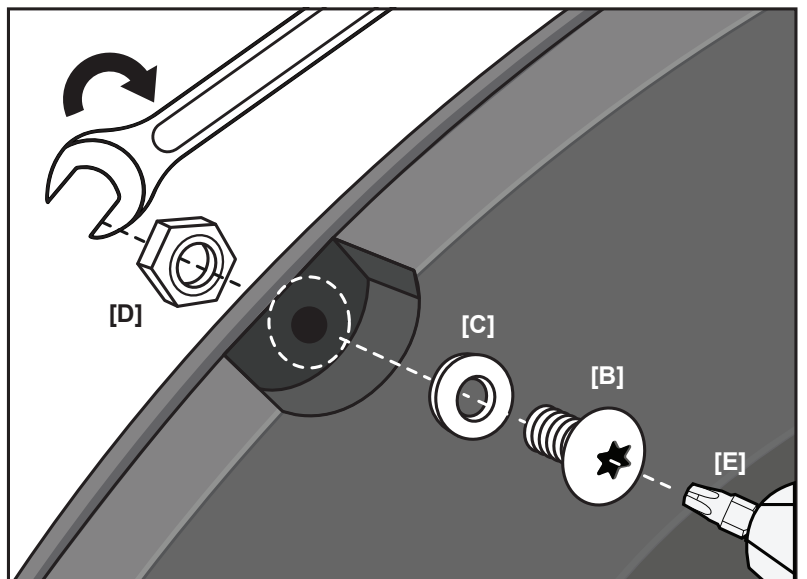
NOTE!

- **DO NOT** drill holes on the vehicle body as rivets are decorative and fasten only to the flare. Do not attempt to use the bolts to fasten flare to vehicle body.

- All exposed fasteners and bare metal should be treated with rust resistant paint before installing flares. Spray inner fender wells with undercoating after flare installation

- For vehicle with large tires may require lowering bump stops and/or installing steering stops to prevent tire from contacting flares

- Modification may be necessary to maintain a minimum 4" clearance between flares and exhaust pipes. (Exhaust gases should not vent directly onto flares)





TYGER®

FRONT FLARES INSTALLATION



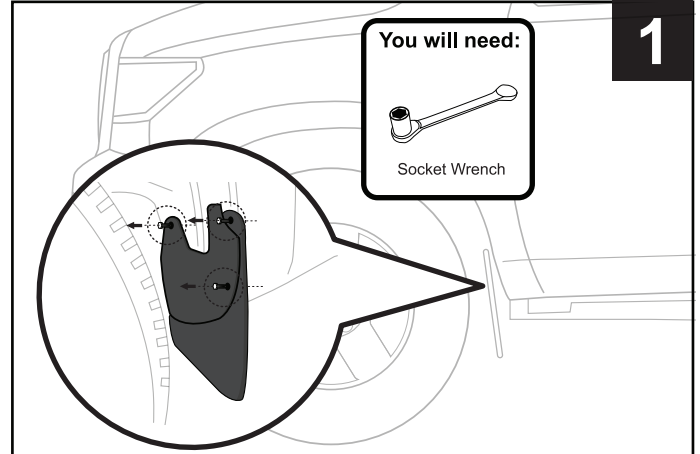
NOTE!

PLEASE USE APPROPRIATE TOOLS TO CLEAN THE VEHICLE IF IT IS NECESSARY, DRY IT OUT BEFORE YOU START THE INSTALLATION.

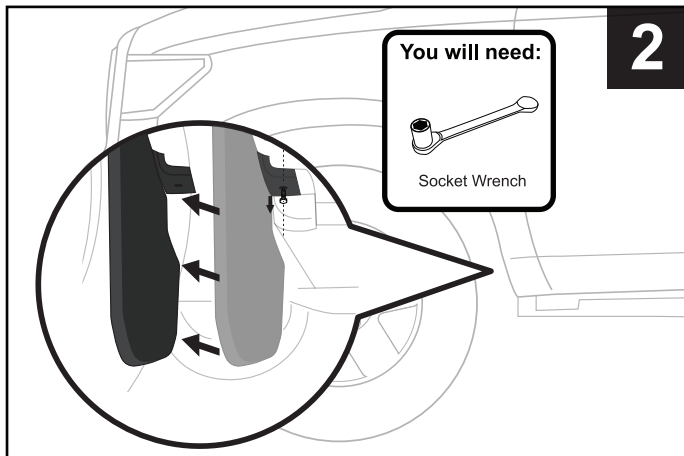


ATTENTION!

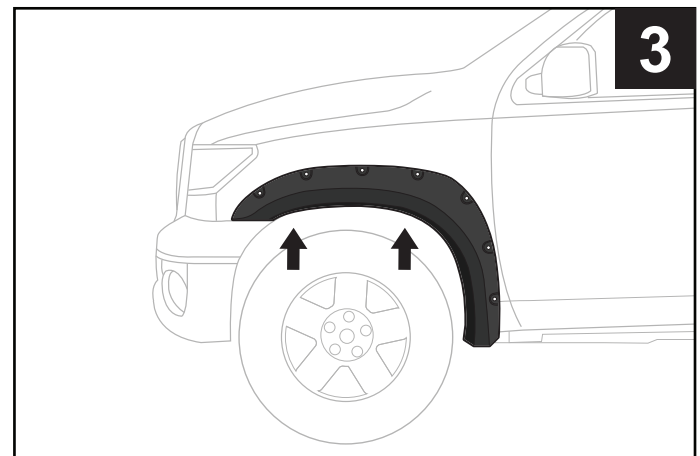
SOME COMPONENTS MIGHT BE SHARP, FOR SAFETY CONCERNS, PLEASE WEAR GLOVES DURING THE INSTALLATION FOR PROTECTION IF IT IS NEEDED.



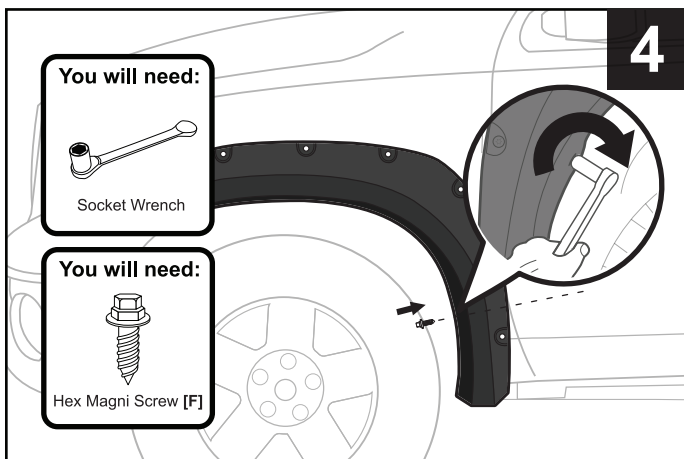
1. Use 10mm Socket Wrench to remove 3 hex bolts from factory front mud flap as shown. Bolts will not be reused.



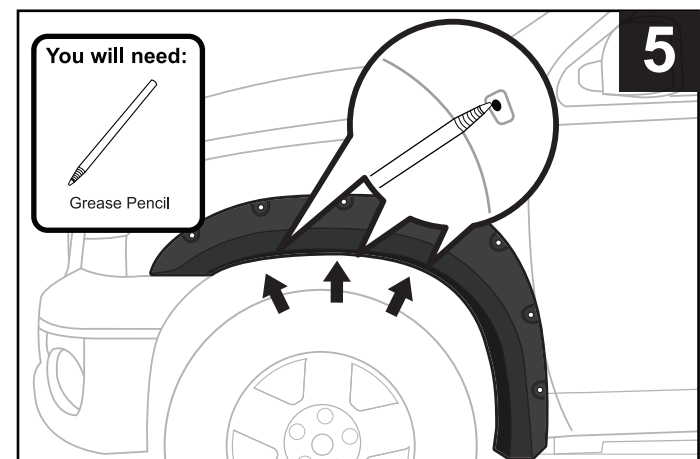
2. Use 10mm Socket Wrench to remove factory hex bolt from UNDERSIDE of mud flap. Remove mud flap. Bolt will not be reused.



3. Line up the front flare on fender.



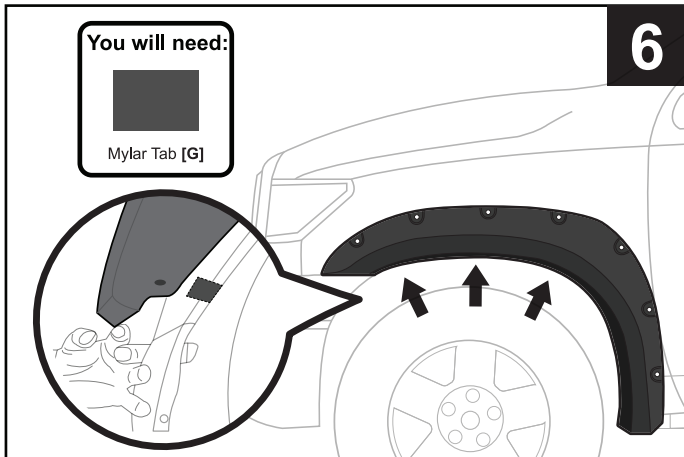
4. Use a 10mm Socket Wrench to install 1 supplied Hex Magni Screw [F] through flare into TOP factory hole from STEP 1 without tightening.



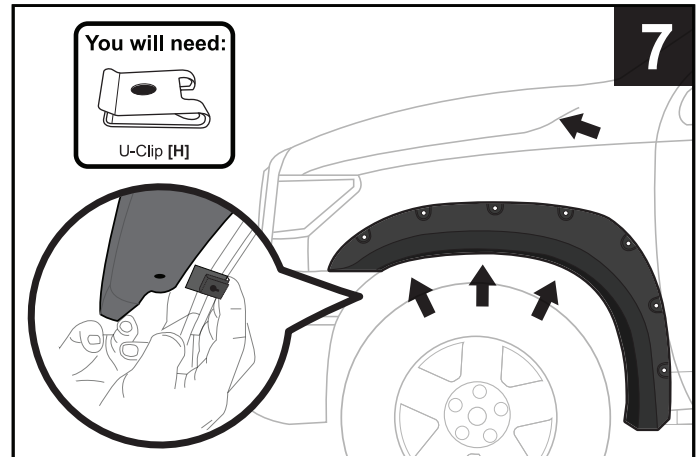
5. Press flare against fender into position. With a grease pencil mark fender through top 3 flare holes.



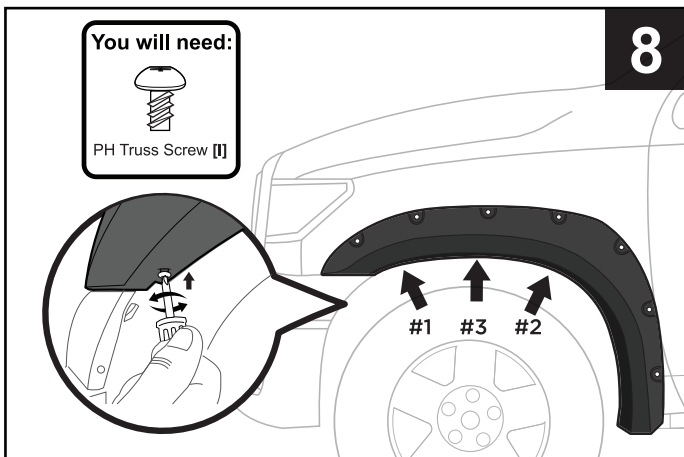
TYGER®



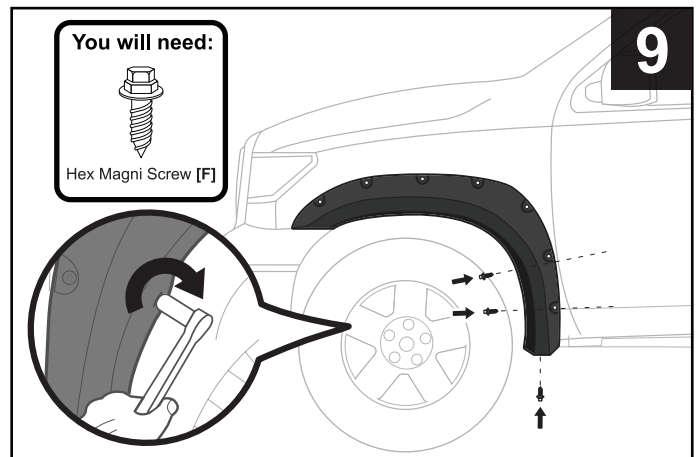
6. Expose 3 marked fender locations by carefully pulling flare away from fender. Apply supplied Mylar Tabs [G] over each of 3 marked locations.



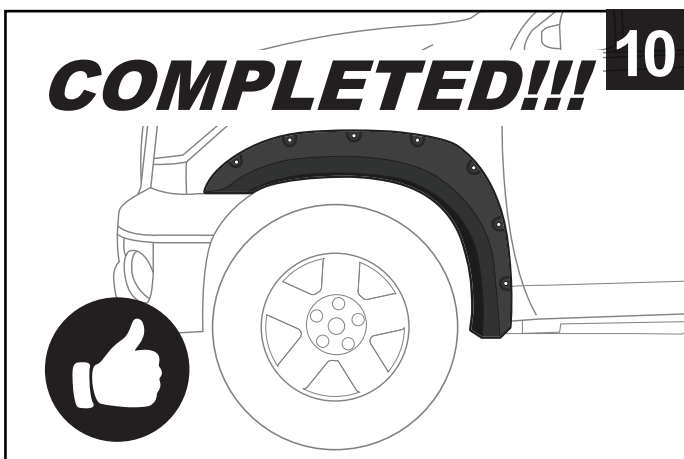
7. Install supplied U-Clips [H] over each of 3 Mylar Tabs.



8. Adjust flare to line up top 3 flare holes with U-Clip holes. Then in numerical order, install supplied PH Truss Screws [I] through flare holes 1 to 3 into U-Clip holes.



9. Install supplied Hex Magni Screws [F] to the remaining 2 factory holes (BOTTOM and INSIDE) from STEP 1. Then install another Hex Magni Screw to factory hole (BACKSIDE BOTTOM) from STEP 2.

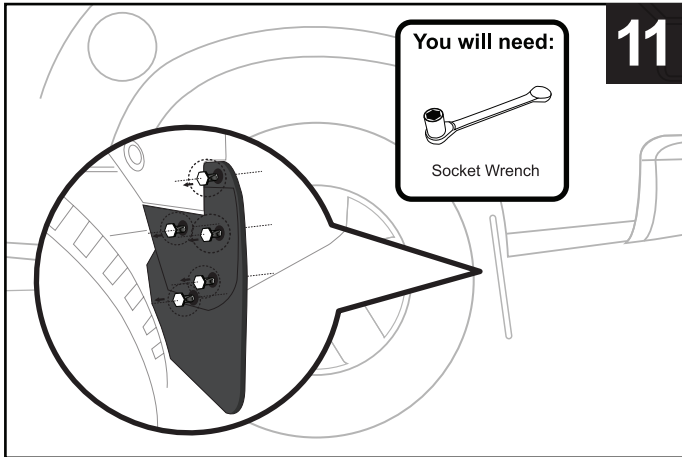


10. Complete installation by tightening all screws. Repeat STEPS 1-10 for the opposite side.

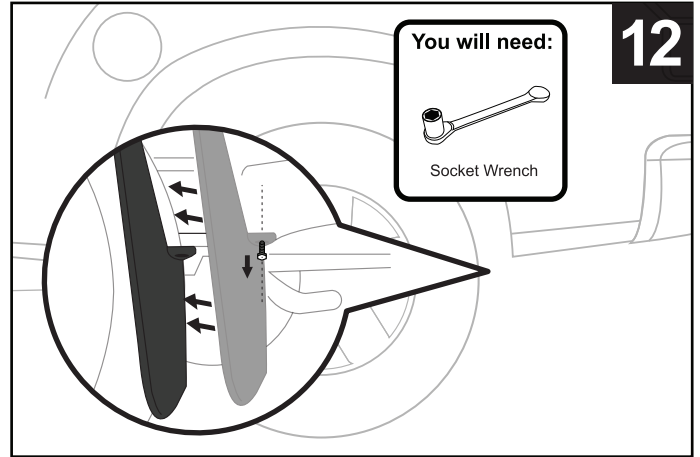


TYGER®

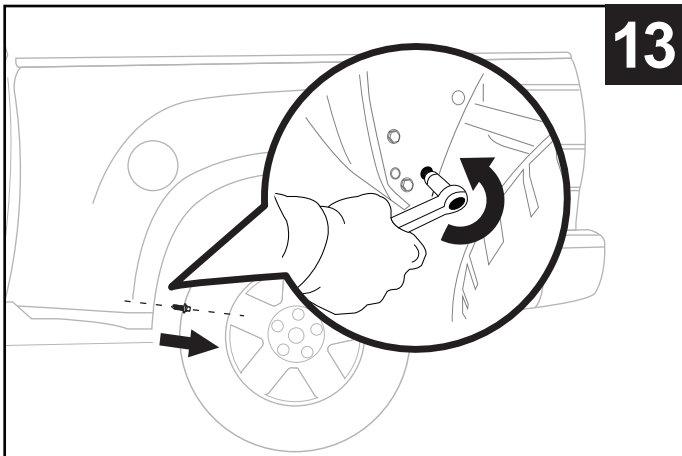
REAR FLARES INSTALLATION



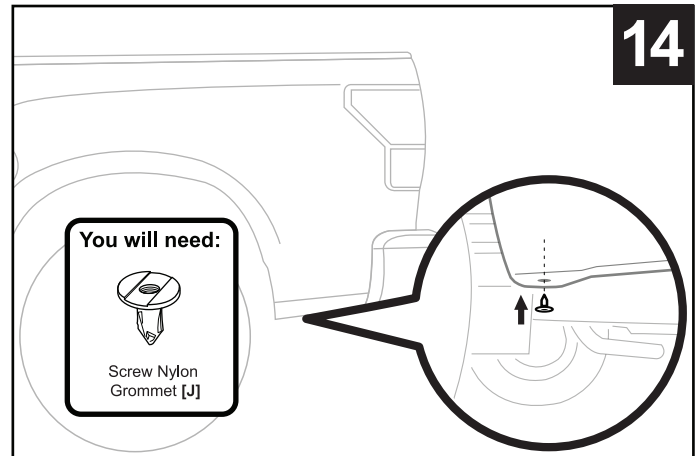
11. Use 10mm Socket Wrench to remove 5 hex bolts from factory front mud flap as shown. Bolts will not be reused.



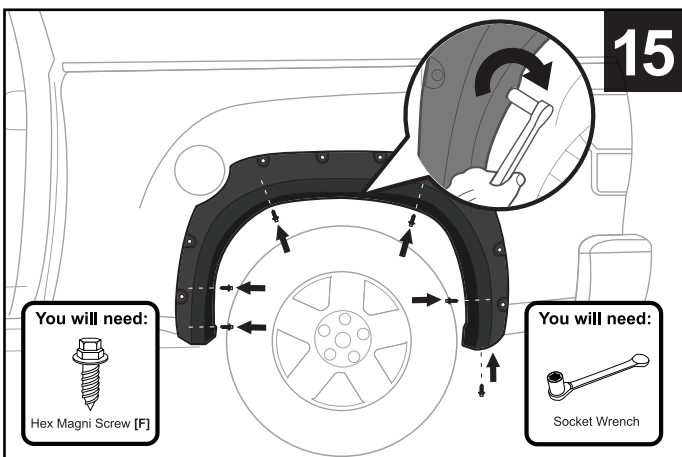
12. Use 10mm Socket Wrench to remove factory hex bolt from UNDER-SIDE of mud flap. Remove mud flap. Bolt will not be reused.



13. Use 10mm Socket Wrench to remove LOWER factory screw (exact location shown above) from FRONT side of wheel well.



14. Install 1 supplied Screw Nylon Grommet [J] into UNDERSIDE factory hole from STEP 12 if it does not already have a factory installed plastic grommet.



15. Position and secure flare against fender. Install 1 Hex Magni Screws [F] through each of 6 indicated flare holes into fender. (shown above)

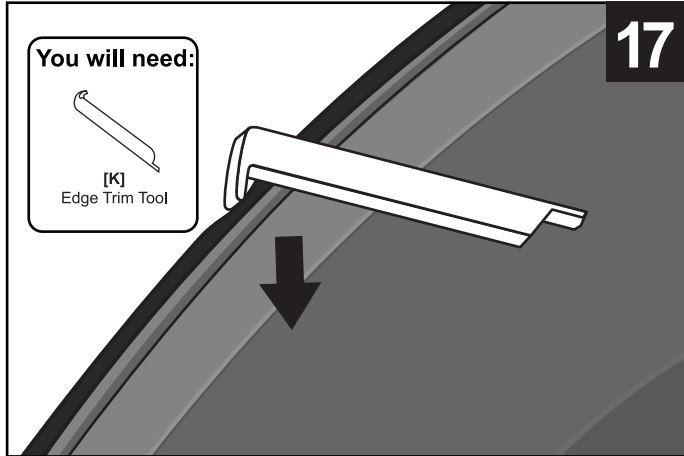


16. Complete installation by tightening all screws. Repeat STEPS 11-16 for the opposite side.

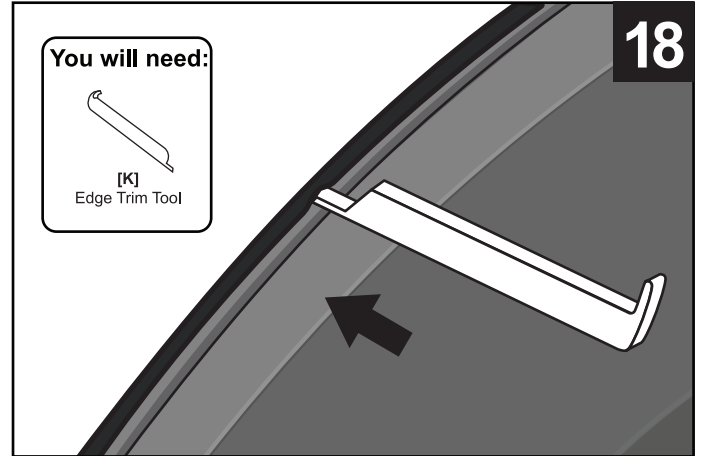


TYGER®

EDGE TRIM TOOL USAGE (OPTIONAL):

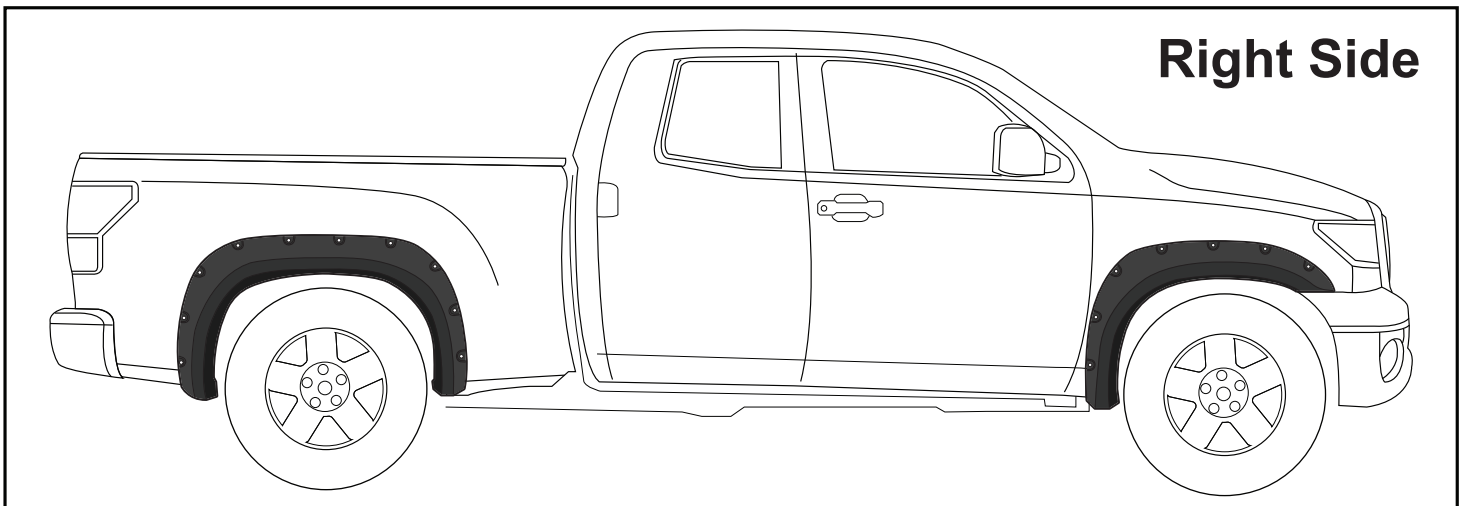
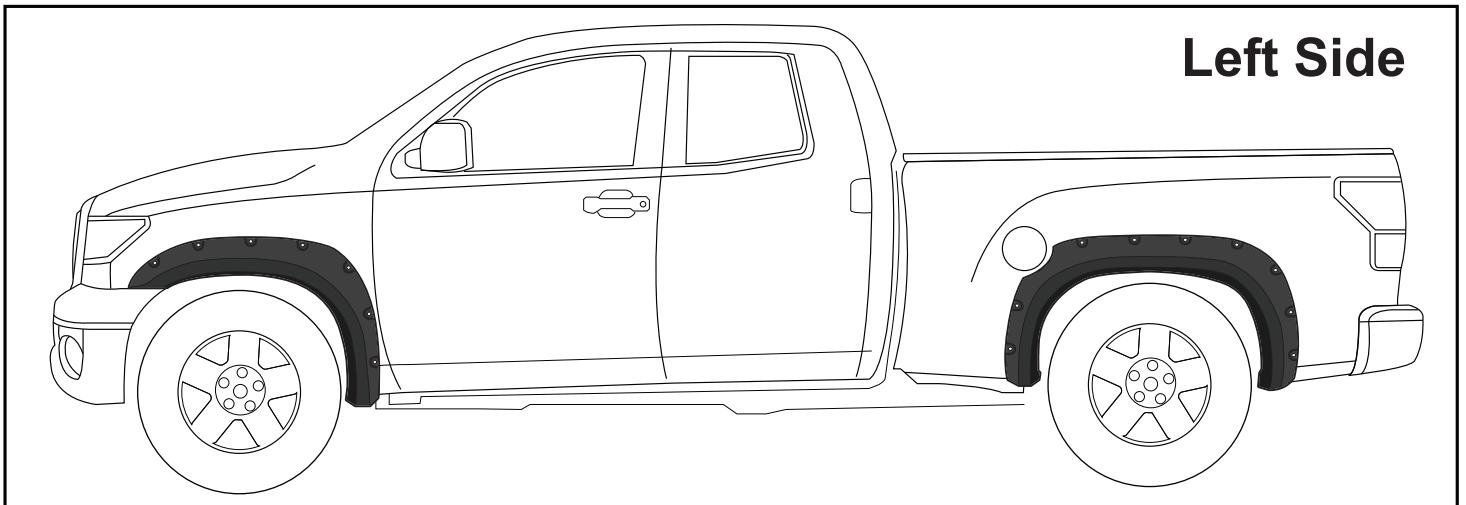


17. If needed, use supplied Edge Trim Tool [K] to trim outer edge by inserting the curved end, then sliding around the entire trim from one end to the other.



18. If needed, use supplied Edge Trim Tool [K] to trim inner edge by inserting the straight end, then sliding around the entire trim from one end to the other.

FINAL COMPLETED EFFECTS



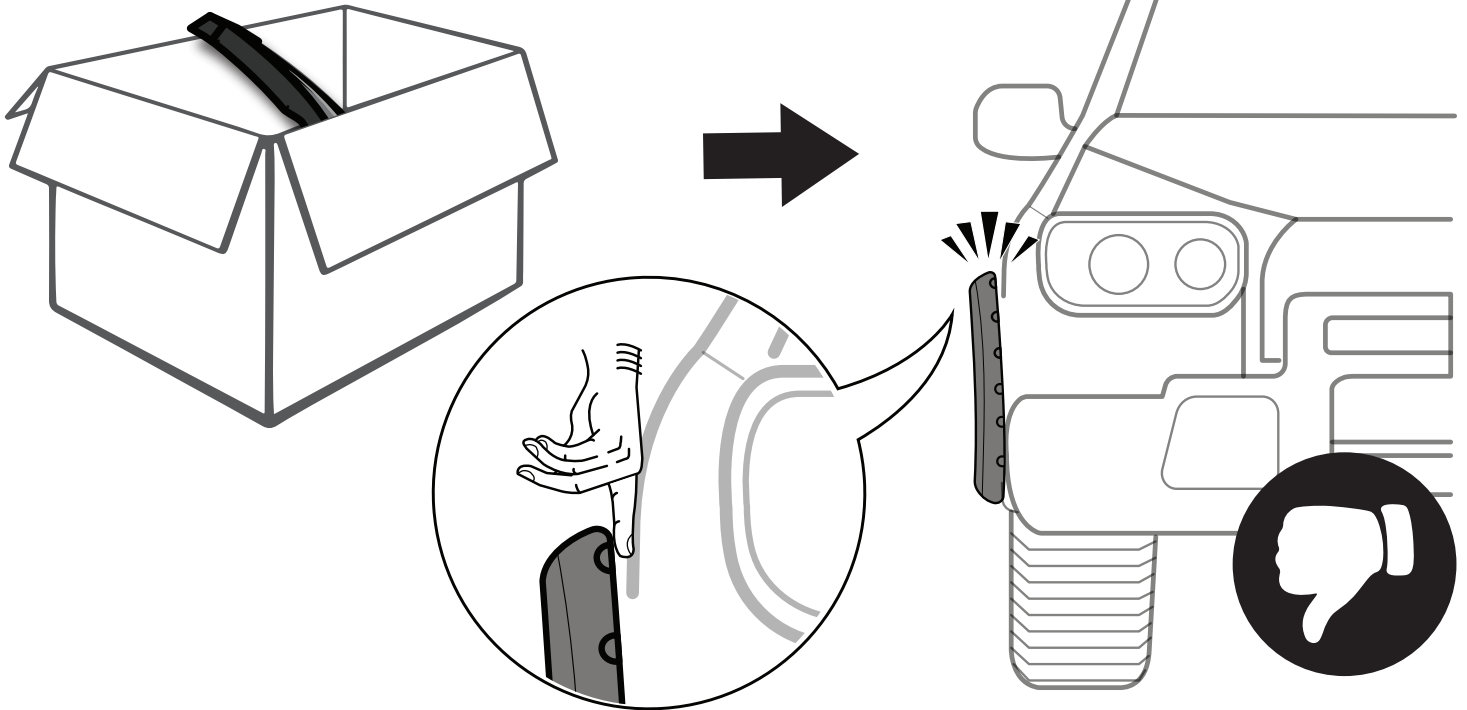
NOTE:

Above images are for reference ONLY, final result may vary.

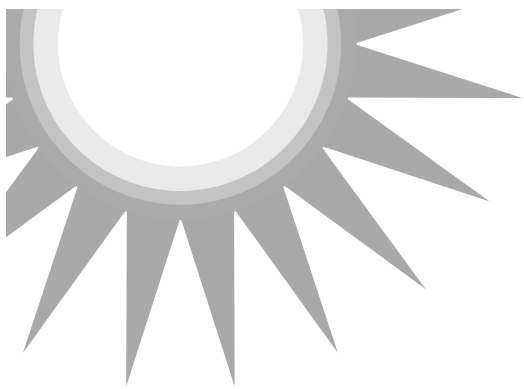


TYGER[®]

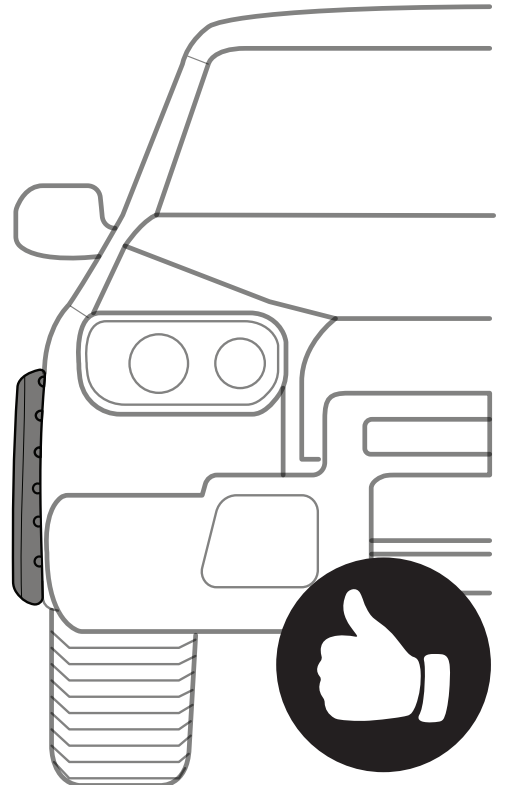
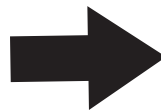
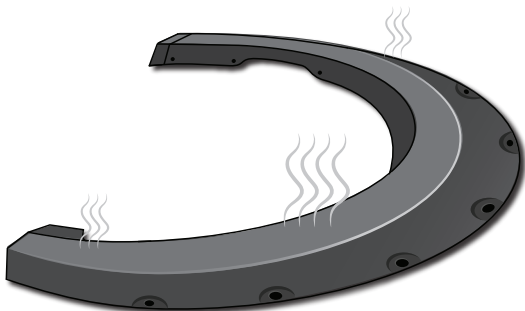
FITMENT OR GAP ISSUE?



SOLUTION!



AFTER
2-3
HOURS



*In winter, heat gun or hair dryer may be used instead.