



RUST BUSTER

RB8430
2003-2009 Toyota® 4Runner
2007-2014 Toyota® FJ Cruiser
Middle Body Mount



VIDEO AVAILABLE



REQUIRED TOOLS

Jack Stands or Lift
Mig Welder
Paint/Primer
Hand Grinder
Cutting Wheel or Torch
Welding Gloves
Welding Hood/Shield
Ear & Eye Protection
Sockets & Ratchet
Fire Extinguisher
Tape Measure
Paint Marker

KIT CONTAINS

Middle Body Mount

QTY

1



RUST BUSTER

RB8430 2003-2009 Toyota® 4Runner 2007-2014 Toyota® FJ Cruiser Middle Body Mount

1) PREPARING YOUR VEHICLE

Begin by disconnecting your battery prior to starting your installation.

Inspect your vehicle for leaking fuel lines, fuel tank and engine components. If you have fuel leaks repair all leaks prior to starting your installation. If your fuel tank is near your welding area **remove your tank prior to welding.**

Remove all combustible items above the work area such as seats, carpets, padding, etc.

Keep all flammable materials away from the vehicle work area.

2) PREPARING YOUR WORKSTATION

Keep a fire extinguisher close by in the case of fire and make sure you always have a designated "Fire Watch" to assist during the cutting or welding phases.

Abide by all apprenticed welding safety standards and practices.

Always use appropriate welding eye protection, ear protection, and work and fire safety gloves during the installation and within the work area.



WARNING!

If you are unsure on how to perform the installation or how to operate any of the required tools listed above, it is **HIGHLY** advised that you enlist the work of a certified welder/installer.

Failure to follow proper safety precautions and instructions may result in serious injury. **The user assumes all liability when installing the product.**



RUST BUSTER

RB8430 2003-2009 Toyota® 4Runner 2007-2014 Toyota® FJ Cruiser Middle Body Mount

3) PREPARING FOR YOUR INSTALL

Remove the body mount bolt and bushing.

CUT

Cut off the factory body mount.

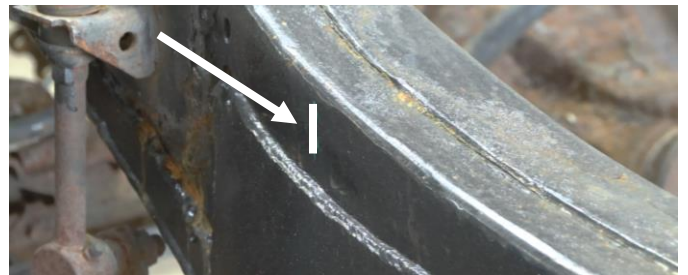


Grind down the frame free of rust and debris, revealing bare metal.



4) MEASURE

On the opposite side of your vehicle, use a tape measure to measure the distance from the hole to the outer rim on the factory body mount bracket (5 3/8 inch).



Then, measure the distance between the body mount and top of the rail (2 in).

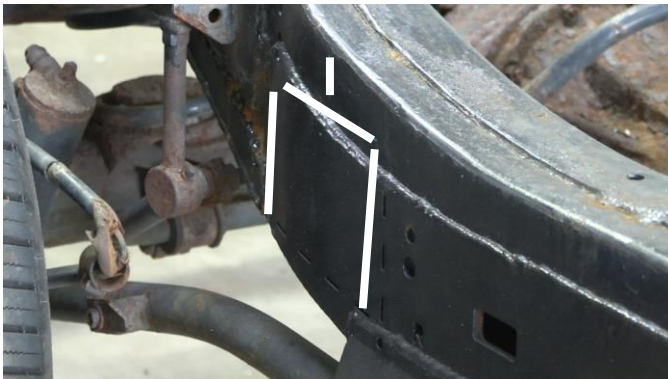




RUST BUSTER

RB8430 2003-2009 Toyota® 4Runner 2007-2014 Toyota® FJ Cruiser Middle Body Mount

Mark off your measurements on the side you'll be working on. Once you've confirmed your measurements, mark off the perimeter of the part before welding the part into the frame.



5) WELD

Remove any potential fire hazards from the work area. Following proper welding procedures, tack weld the part to the frame. Then, weld the part on fully. Weld 100% around all edges



6) PAINT AND PROTECT

Coat the part and work area with a primer or other rust inhibitor to help prevent or reduce the risk of rust formation.





**RUST
BUSTER**

RB8430
2003-2009 Toyota® 4Runner
2007-2014 Toyota® FJ Cruiser
Middle Body Mount



- 7) **REINSTALL**
Reinstall the bolt, and bushing.