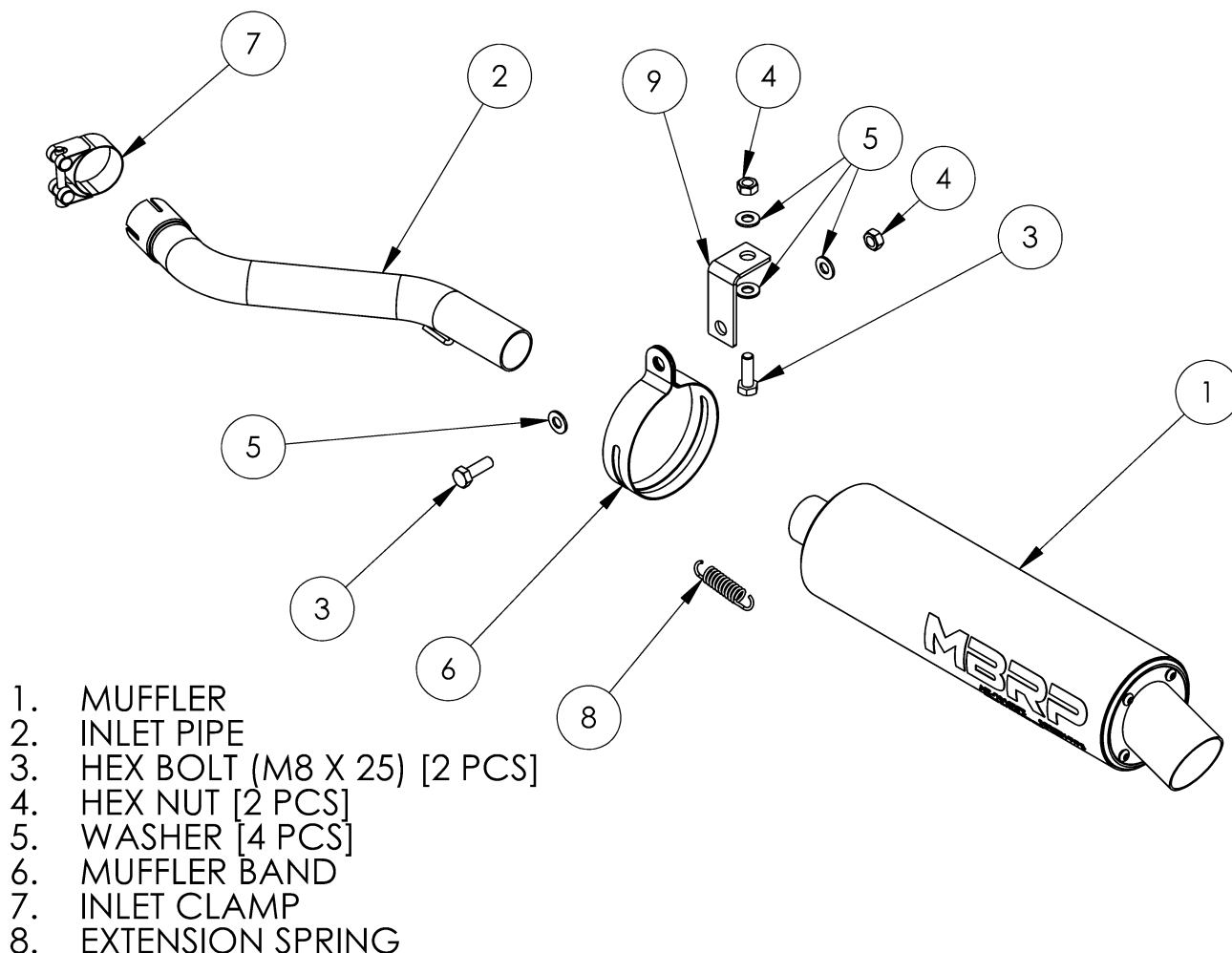


AT-7101

UTILITY MUFFLER - SLIP-ON SYSTEM
1985-1987 HONDA TRX 250, ATC 250ES
BIG RED

MBRP



PLEASE READ BEFORE STARTING INSTALLATION

While MBRP Inc. has made every effort to ensure that all components of this system are of superior quality and properly packaged, it is the installer's responsibility to ensure the following before removal of the factory exhaust:

- that ALL components shown above are present.
- that ALL mating components fit together.
- that there are no damaged components.
- that the system you have purchased is appropriate for your year and model of bike.
- that the system will not interfere with any modifications previously installed or planned.
- that you have read and understand these instructions.

If you have any questions or are uncertain about any aspect of the installation of this system to your bike please contact your dealer before commencing installation.



Removal of Stock Exhaust:

1. Remove the clamp at the slip joint ahead of the muffler.
2. Remove the bolts holding the muffler, then remove the muffler.
3. Remove the metallic gasket from the head pipe.

Installation of MBRP Exhaust:

1. On the bench, slide the clamp onto the **Inlet Pipe**. Afterwards, slide the **Inlet Pipe** into the expanded end of the **Muffler** so that the **Spring** mounts line up on both.
2. Install the **Spring**.
3. Now slide the new exhaust system in from the rear of the bike until the **Inlet Pipe** slides over the original head pipe. (The new system does not use the original clamp or the metallic gasket as the new **Inlet Pipe** will fit snug over the head pipe.)
4. The **Muffler** and the **Inlet Pipe** can be rotated as required so no part of the new exhaust touches the frame.
5. Hang the **Muffler** using the **Muffler band, Bracket, Washers**, and the **M8 x 25 mm Hex bolts** provided.

Congratulations! You are ready to begin experiencing the improved performance and driving excitement of your MBRP Ltd. ATV Exhaust upgrade. We know you will enjoy your purchase.

MBRP

Spark Arrestor Maintenance

In order to maintain optimal performance, the spark arrestor screen should be cleaned every 30-35 hours of use.

Clean-out Instructions:

Make sure the vehicle is cool before completing the clean-out procedure.

1. Using a 1/8" hex key, remove the 4 screws securing the outlet cap. (Figure 1).
2. Remove the outlet cap to expose the spark arrestor screen insert. (Figure 2)
3. Remove the screen insert. (Figure 3)
4. Using a wire brush, thoroughly brush the screen to remove residue. (Figure 4)
5. Replace the screen and cap.
6. Tighten the screws to 23 in-lbs (2.6 Nm).



Figure 1



Figure 2



Figure 3



Figure 4