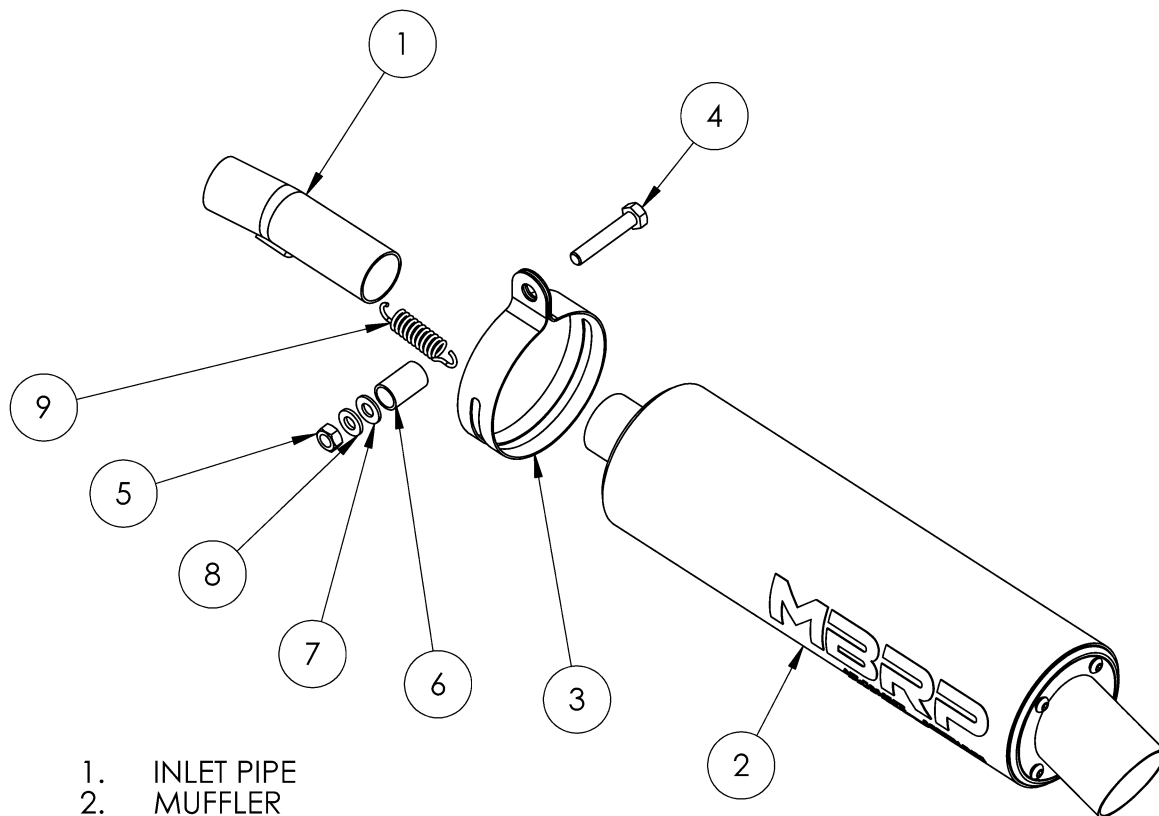


AT-7400

UTILITY MUFFLER

1983-1985 YAMAHA YTM200
(Tri-Moto)

MBRP



1. INLET PIPE
2. MUFFLER
3. CLAMP
4. HEX BOLT (M8 X 45MM)
5. HEX NUT
6. SPACER
7. WASHER
8. LOCK WASHER
9. EXTENSION SPRING

PLEASE READ BEFORE STARTING INSTALLATION

While MBRP Inc. has made every effort to ensure that all components of this system are of superior quality and properly packaged, it is the installer's responsibility to ensure the following before removal of the factory exhaust:

- that ALL components shown above are present.
- that ALL mating components fit together.
- that there are no damaged components.
- that the system you have purchased is appropriate for your vehicle year, model and configuration.
- that the system will not interfere with any modifications previously installed or planned.
- that you have read and understand these instructions.

If you have any questions or are uncertain about any aspect of the installation of this system to your vehicle please contact your dealer before commencing installation.



Removal of Stock Exhaust:

***The original head pipe needs to be cut to install this exhaust system.**

1. Cut the head pipe just behind the muffler.
2. Unbolt the muffler from the frame and remove it.
4. De-burr the end of the cut pipe with file.
5. Clean any rust scale off the pipe where the new system slides on.

Installation of MBRP Exhaust:

1. Slide the **Inlet Pipe** into the **Muffler** so the **Spring** tabs line up on both.
2. Install the **Spring**.
3. Slide the new **Clamp** provided over the new **Inlet Pipe**.
4. From the rear of the bike, slide the new system over the original head pipe as far as it will go – twist the exhaust system back and forth to get it on all the way.
5. Slide the **Muffler Band** over the **Muffler** and mount it to the frame using the **M8 x 45mm Bolt** and the **5/8" Spacer Tube** Supplied.
6. Tighten the **Clamp** on the **Inlet Pipe**

Congratulations! You are ready to begin experiencing the improved performance and driving excitement of your MBRP Ltd. ATV Exhaust upgrade. We know you will enjoy your purchase.

MBRP

Spark Arrestor Maintenance

In order to maintain optimal performance, the spark arrestor screen should be cleaned every 30-35 hours of use.

Clean-out Instructions:

Make sure the vehicle is cool before completing the clean-out procedure.

1. Using a 1/8" hex key, remove the 4 screws securing the outlet cap. (Figure 1).
2. Remove the outlet cap to expose the spark arrestor screen insert. (Figure 2)
3. Remove the screen insert. (Figure 3)
4. Using a wire brush, thoroughly brush the screen to remove residue. (Figure 4)
5. Replace the screen and cap.
6. Tighten the screws to 23 in-lbs (2.6 Nm).



Figure 1



Figure 2



Figure 3



Figure 4