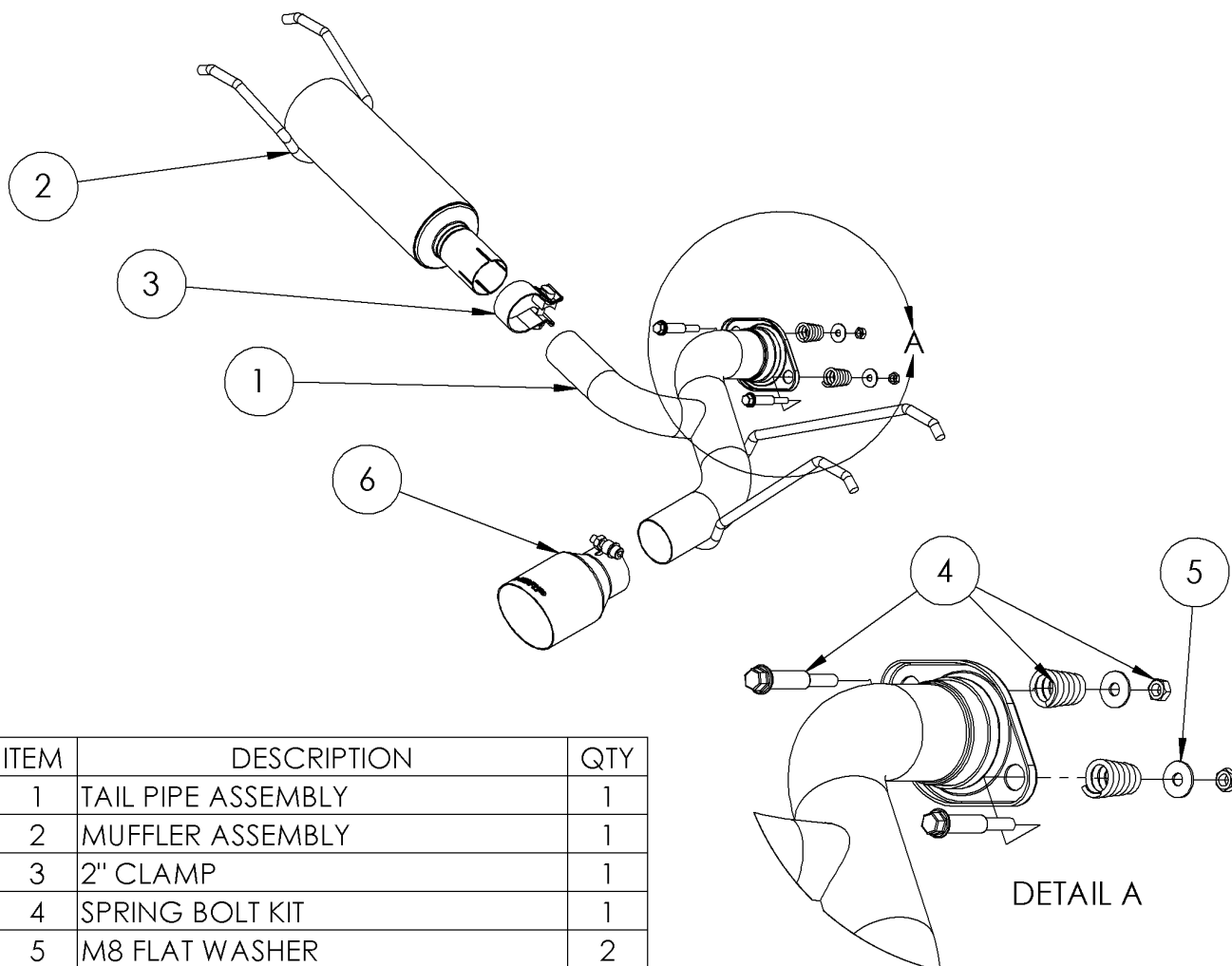


S4452

2016-UP MAZDA MX-5 MIATA, 2.0L,
AXLE-BACK, 2.5" SINGLE REAR

MBRP®



ITEM	DESCRIPTION	QTY
1	TAIL PIPE ASSEMBLY	1
2	MUFFLER ASSEMBLY	1
3	2" CLAMP	1
4	SPRING BOLT KIT	1
5	M8 FLAT WASHER	2
6	TIP	1

Refer to this LOT NUMBER when contacting customer service: _____

PLEASE READ BEFORE STARTING INSTALLATION

While MBRP has made every effort to ensure that all components of this system are of superior quality and properly packaged, it is the installer's responsibility to ensure the following before removal of the factory exhaust:

- that ALL components shown above are present.
- that ALL mating components fit together.
- that there are no damaged components.
- that the system you have purchased is appropriate for your vehicle year, model and configuration.
- that the system will not interfere with any modifications previously installed or planned.
- that you have read and understand these instructions.

If you have any questions or are uncertain about any aspect of the installation of this system to your vehicle please contact your dealer before commencing installation.



Figure 1

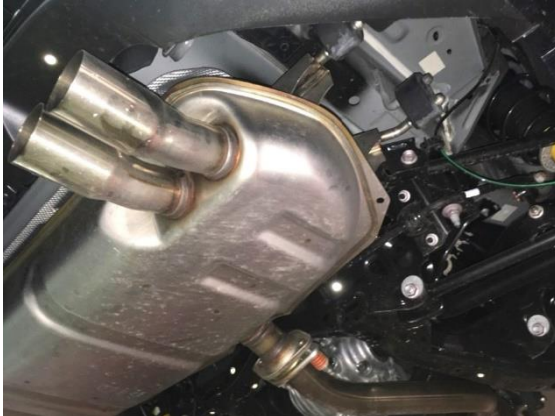


Figure 2



Figure 3



Figure 4

Removal of Stock System

1. Apply a penetrating lubricant liberally to all exhaust fasteners, hangers and rubber insulators.
2. Remove the nuts and springs securing the factory muffler assembly. Retain the factory donut gasket for the installation.
Refer to Figure 1.
3. With the exhaust system supported, remove the four factory insulators from the vehicle. Retain the insulators for the installation.
Refer to Figure 2 and 3.
4. Remove the muffler assembly from the vehicle.

Installation of **MBRP** Performance Exhaust

1. Install the factory insulators onto the **Tail Pipe Assembly** and the **Muffler Assembly**.
2. Using the factory donut gasket, the **M8 Flat Washers**, and the **Spring Bolt Kit**, loosely attach the **Tail Pipe Assembly** onto the factory flange connection. Align the flanges to center the pipe connection and gasket.
Refer to Figure 4 and Page 1.
3. Using a **2" Clamp**, loosely install the **Muffler Assembly** onto the **Tail Pipe Assembly**. Reinstall the factory rubber insulators.
Refer to Figure 5.
4. Loosely install the Tip and adjust to your liking.
Refer to Figures 6 and 7.

MBRP®



Figure 5



Figure 6



Figure 7

5. Carefully align the system and tip. Align the edge of each band clamp with the edge of the joint it is connecting. Tighten all hardware and clamps, starting at the front and working rearward to secure the system. Check along the full length of the exhaust system to ensure there is adequate clearance for fuel lines, vent lines, brake lines, frame, bodywork, suspension and any wiring, etc. If there is any interference detected, relocate or adjust to provide adequate clearance. Ensure all clamp connections are secure and components are unable to rotate or slide. Band clamps (excluding tip hardware) require approximately 45 lb-ft (60 N-m) of torque. Verify clearances, system security and band clamp torque after 30-60 miles (50-100 km) of driving.



Congratulations! You are ready to begin experiencing the improved performance and driving pleasure of your **MBRP** performance exhaust system. We know you will enjoy your purchase.