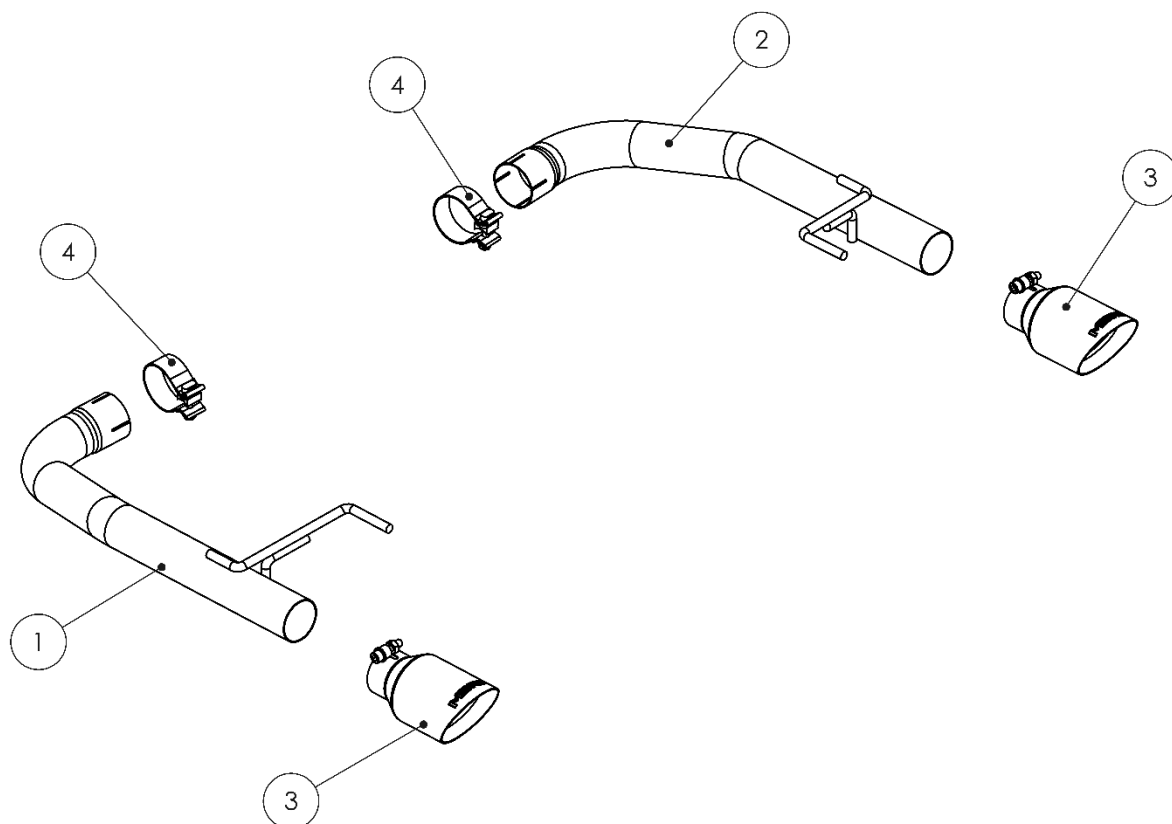


S7276

2015-2017 FORD MUSTANG GT,
2024-UP FORD MUSTANG GT W/O
FACTORY ACTIVE EXHAUST,
5.0L, AXLE-BACK, 2.5" DUAL REAR

MBRP®



1. DRIVER-SIDE PIPE ASSEMBLY
2. PASSENGER-SIDE PIPE ASSEMBLY
3. TIP [2 PCS]
4. 2.5" CLAMP [2 PCS]

Refer to this LOT NUMBER when contacting customer service: _____

PLEASE READ BEFORE STARTING INSTALLATION

While MBRP has made every effort to ensure that all components of this system are of superior quality and properly packaged, it is the installer's responsibility to ensure the following before removal of the factory exhaust:

- that ALL components shown above are present.
- that ALL mating components fit together.
- that there are no damaged components.
- that the system you have purchased is appropriate for your vehicle year, model and configuration.
- that the system will not interfere with any modifications previously installed or planned.
- that you have read and understand these instructions.

If you have any questions or are uncertain about any aspect of the installation of this system to your vehicle please contact your dealer before commencing installation.



Figure 1



Figure 2

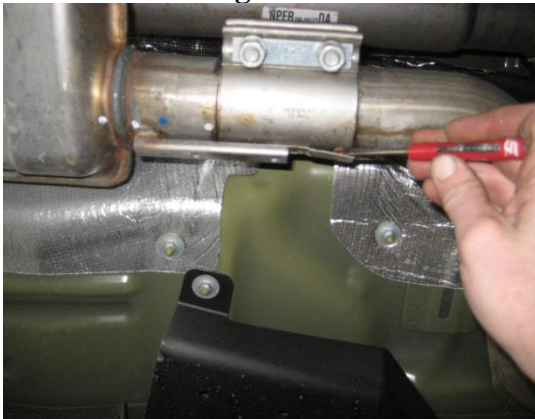


Figure 3



Figure 4

MBRP[®]

Removal of Stock System

Note: Installation requires cutting the OEM exhaust

1. Apply a penetrating lubricant liberally to all exhaust fasteners, hangers and rubber insulators.
2. Convertibles require removal of the 2 piece under-car brace. **Refer to Figure 1.**
3. Remove the bolts from the mid hanger brackets and remove them from the vehicle. Retain these parts as they will be reused. **Refer to Figure 2.**
4. Loosen both clamps ahead of the resonator, lift the lock tabs and slide the clamps rearward to disconnect the OEM cat-back exhaust. Use caution, the OEM cat-back is one piece and heavy. **Refer to Figure 3.**
5. Remove the OEM cat-back by lowering the inlet end and sliding the assembly forward to remove it from the rear hangers.

Installation of **MBRP** Performance Exhaust

1. Cut the mufflers and inlet elbows off at the end of the short straight section of tubing on the OEM cat-back. There should be approx. 2" of straight tubing remaining on the OEM cat-back. It is critical that this straight length of tubing remain on the OEM cat-back to allow installation of the **MBRP** Axle Back Kit. **Refer to Figures 4 and 5.**



Figure 5



Figure 6



Figure 7



Figure 8

MBRP®

2. Install the modified OEM cat-back exhaust in the reverse order of the description above. Leave the clamps and mid hanger brackets loose at this time.

3. Install a **2.5" Clamp** onto the inlet of the **Passenger-Side Pipe Assembly**. Slide the Pipe hanger into the rear hanger bracket, followed by sliding the expanded end of the **Passenger-Side Pipe Assembly** onto the cut end of the OEM cat-back pipe. **Refer to Figures 6 and 7.**

3. Repeat step 3 for the driver side components.

4. Install both **Tips** and tighten just enough to allow for adjustment. **Refer to Figure 8.**

5. Install the under-car brace if equipped, using the previously removed hardware.

6. Align the exhaust as required to center the **Tips** in the rear fascia, and provide clearance around all other undercar components, then tighten all clamps.

Note: The mid hanger brackets can be used to help center the **Tips** in the Facia. Once all clamps are tight, adjust the mid hanger brackets to fine tune the placement of the **Tips** then tighten the bolts.

7. Check along the whole length of the exhaust system to ensure that there is adequate clearance around fuel and brake lines or any other components. If any interference is detected relocate or adjust.

Congratulations! You are ready to begin experiencing the improved performance and driving pleasure of your **MBRP performance exhaust system. We know you will enjoy your purchase.**