



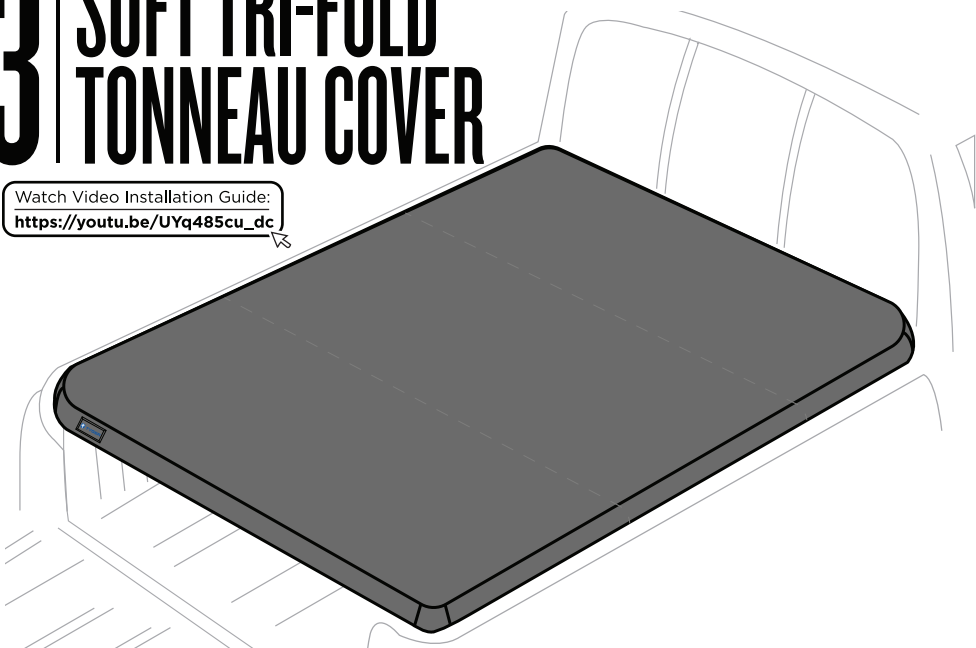
# TYGER®

## T3 | SOFT TRI-FOLD TONNEAU COVER



Watch Video Installation Guide:

[https://youtu.be/UYq485cu\\_dc](https://youtu.be/UYq485cu_dc)



### NEED HELP?

contact us:

1-866-340-3038



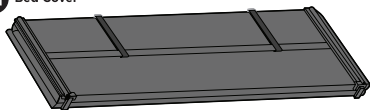
### ATTENTION!

READ INSTRUCTIONS CAREFULLY BEFORE STARTING INSTALLATION. REMOVE CONTENTS FROM BOX AND VERIFY ALL PARTS ARE PRESENT. FAILURE TO IDENTIFY DAMAGE BEFORE INSTALLATION COULD LEAD TO REJECTION OF ANY CLAIM.

## ITEMS LIST

(ONLY MARKED ITEMS ARE INCLUDED)

☐ **x1** Bed Cover



☐ **x1** **SP-BC0003**  
Front Seal Strip  
67" x 1" x 0.4"

☐ **x1** **SP-BC0004**  
Front Seal Strip  
67" x 1.4" x 0.16"

☐ **x1** **SP-BC0005**  
Rear Seal Strip  
79" x 1.2" x 0.24"



☐ **x4** **SP-BC3002**  
Clamp Pad



☐ **x1** **SP-BC0006**  
Tool



Alternative brackets only for truck model with utility track (check Page 8 for installation guide)

☐ **x6** **SP-BC3003B**

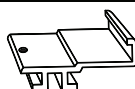
☐ **x6** **SP-BC3006**



☐ **x6** **SP-BC3004**

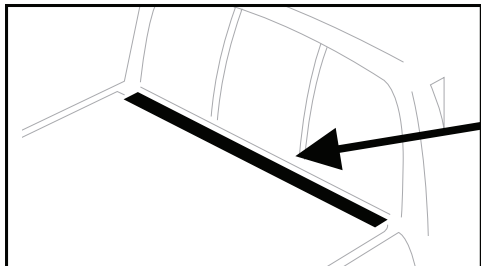


☐ **x6** **SP-BC3005**



1

- Clean truck bed thoroughly before installation.
- Stick the supplied front seal strip on the front bed rail by aligning with the outer edge.
- Place the assembled cover on the bulkhead against the cab and release the safety buckles.



You might need:



**Seal Strip**

(Only apply to some models)



**ATTENTION!**

- IF THE TRUCK'S FRONT BED RAIL IS LOWER THAN THE SIDES, USE THE PROVIDED WEATHER SEAL STRIPS. GAPS ON THE FRONT BED AND TAILGATE WILL CAUSE NOISE AND FLAPPING ISSUES WHILE THE VEHICLE IS IN MOTION!

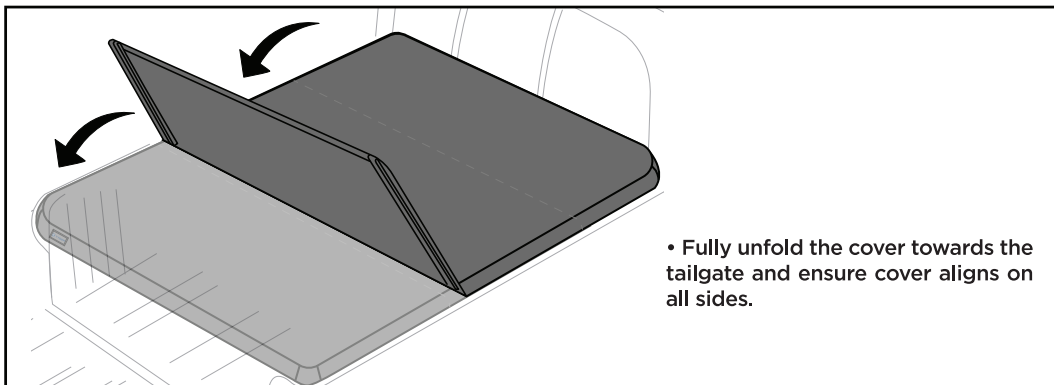
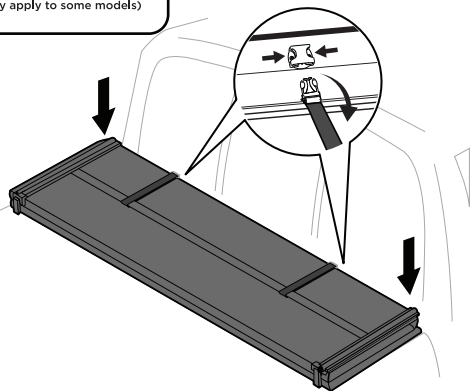
(Optional)



**SP-BC0005**

**Note:**

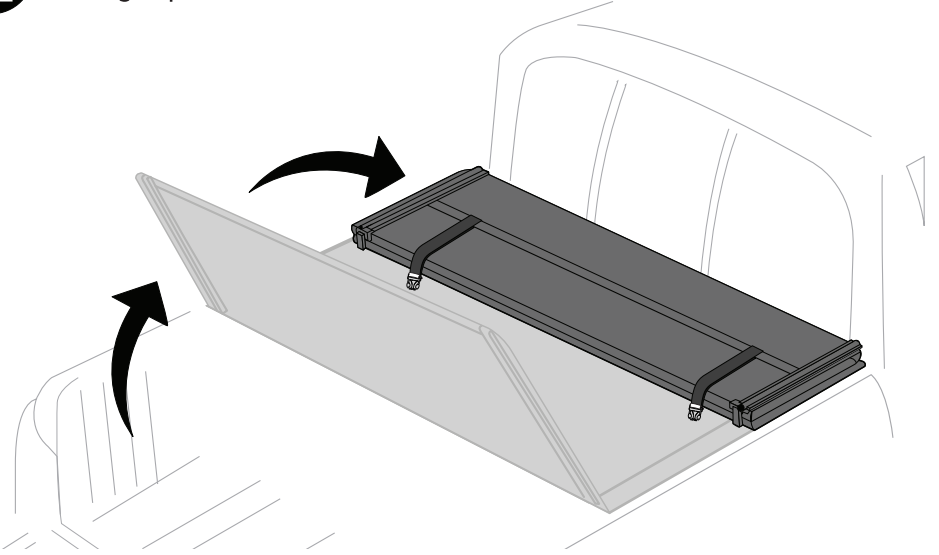
At the bottom of the tailgate, stick the supplied weather strip vertically on the side to seal out any weather elements.



- Fully unfold the cover towards the tailgate and ensure cover aligns on all sides.

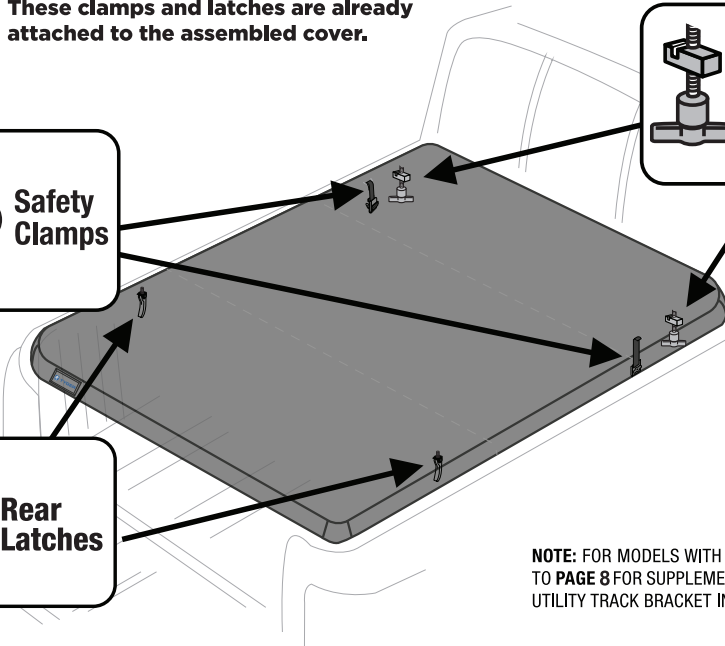
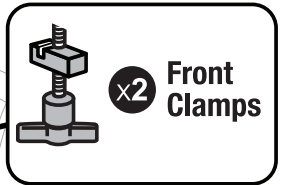
**2**

- Carefully refold the cover without moving its position on the truck bed


**3**

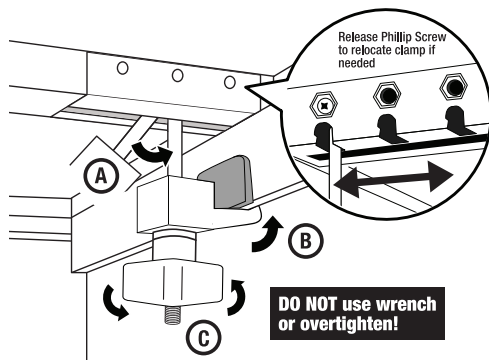
## CLAMPS & LATCHES

- These clamps and latches are already attached to the assembled cover.



**NOTE:** FOR MODELS WITH UTILITY TRACK, REFER TO **PAGE 8** FOR SUPPLEMENTAL INSTRUCTION ON UTILITY TRACK BRACKET INSTALLATION.

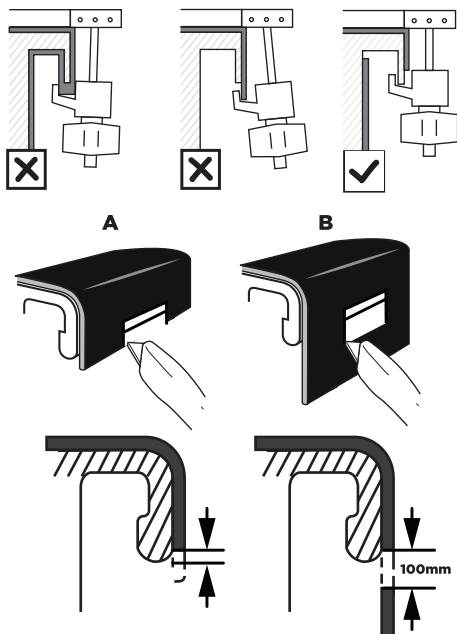
## 4 FRONT CLAMPS USAGE



**A** Pull down front clamps into vertical position.

**B** Hook jaw portion of the clamp under the metal bed rail lip. Clamp pad can be inserted at the contact point to protect paint.

**C** Turn the knob until side Q-seal of the cover is compressed and clamp is snug.

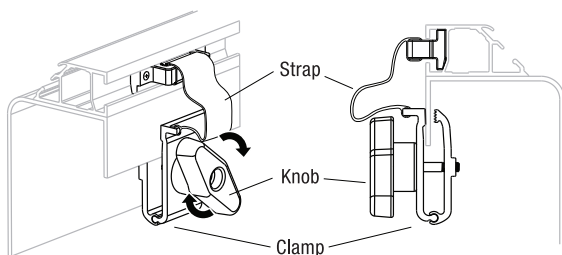


### ATTENTION!

FOR TYPE A OR B OVER-THE-RAIL BEDLINER SHOWN ABOVE, A SMALL HOLE LARGE ENOUGH TO FIT THE CLAMP WILL NEED TO BE CUT SO THE CLAMP CAN BE FASTENED SECURELY TO THE METAL PART OF THE TRUCK BED LIP!

## 5 SAFETY CLAMPS USAGE

- Turn the knob counterclockwise to loosen the safety clamp with the strap, attach clamp to the metal bed rail lip on both sides, then tighten.



**DO NOT use wrench or overtighten!**

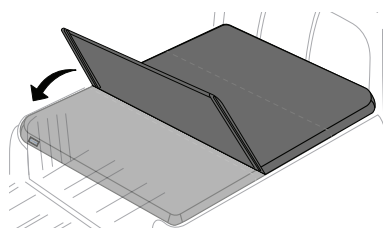


### ATTENTION!

- SAFETY CLAMPS MUST BE SECURED PROPERLY TO THE **METAL PART** WHEN VEHICLE IN MOTION, OTHERWISE THE WARRANTY WILL BE VOIDED.

## 6

- Unfold the cover completely towards the tailgate.

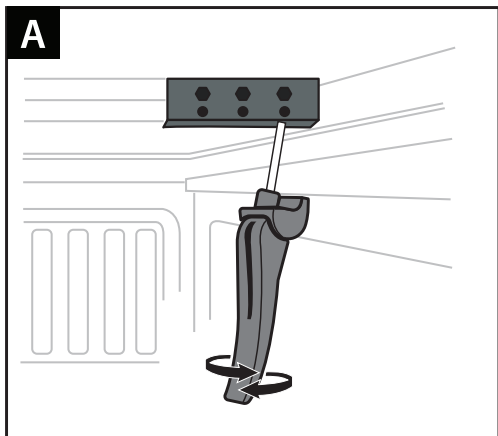


# 7 REAR LATCHES USAGE

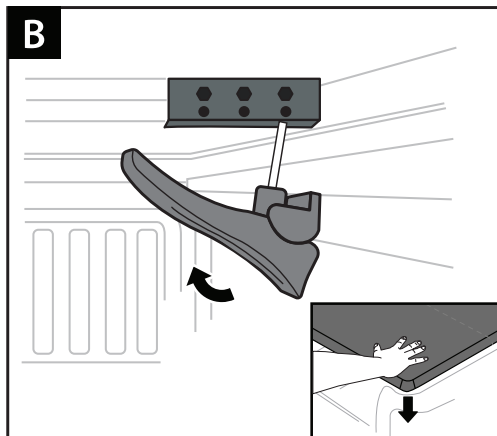


## ATTENTION!

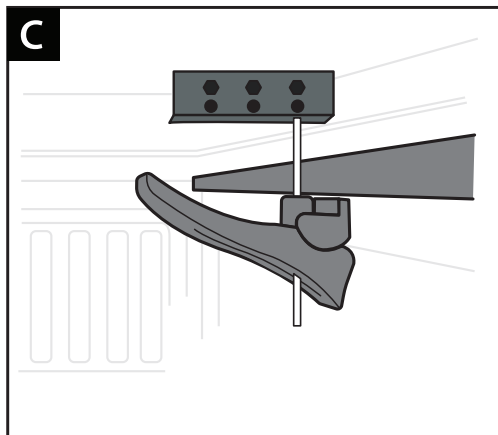
- ALL LATCHES & CLAMPS MUST MAKE SOLID CONTACT WITH THE METAL BED RAIL LIP FOR THE COVER TO BE SECURE



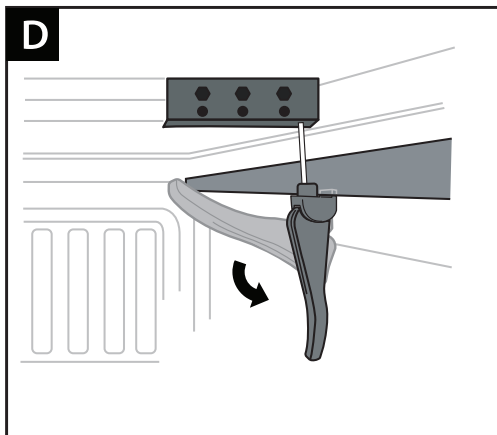
**A:** Start by pulling down latch handle from the back of cover. Then unscrew the handle to lower its position.



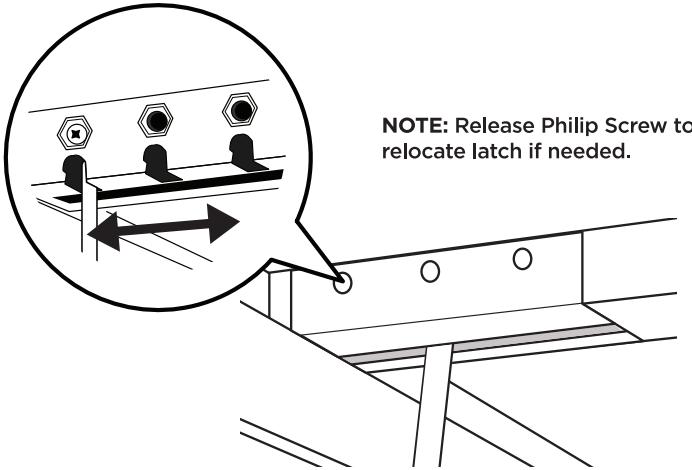
**B:** Make sure latch handle is lifted to its highest position (beyond 90°). Then, with one hand firmly pressed down onto the cover corner, continue to adjust the position of the jaw against the side rail.



**C:** Optimally, opening of latch jaw should be level with the side rail lip without limiting access to the jaw's groove.



**D:** Latch onto the side rail lip fully into jaw's groove. Then crank handle down to tighten. Go back and re-adjust jaw position in **STEP B** if you experience any looseness with the latch.



## 8 FINISH THE INSTALLATION

- After rear latches have been latched securely, close/lock tailgate and cover cannot be opened from the outside.

# COMPLETED!!!

**NOTE:** COVER MAY NOT COMPLETELY COVER TO THE OUTSIDE EDGE OF THE BED RAILS DUE TO SLIGHT DIFFERENCE IN TRUCK BED SHAPE FOR DIFFERENT YEAR MODELS.



DO NOT  
OVERLOAD CARGO



DO NOT PLACE  
SHARP OBJECTS ON TOP



REMOVE SNOW  
BEFORE FOLDING COVER



SECURE ALL CLAMPS  
BEFORE DRIVING



USE SEAL STRIPS FOR  
EXPOSED GAPS TO  
AVOID LEAKING



DO NOT CLEAN WITH  
ABRASIVE CHEMICALS  
RECOMMEND TO USE TYGER  
CLEAN & PROTECTANT SPRAY

# 9 FOLDING UP THE COVER

• Open tailgate and release rear latches. Fold up the cover once; secure rear latch on both sides into the groove with the clamp jaw portion facing down as shown in Fig.1. Any other incorrect methods shown in Fig.2 - 4 will cause damage to the vinyl and will void warranty.

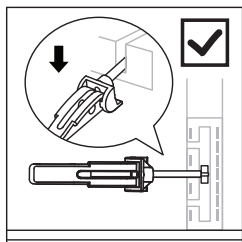


Fig. 1

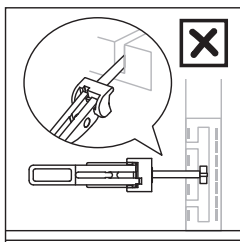


Fig. 2

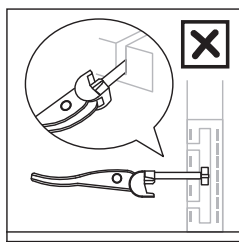


Fig. 3

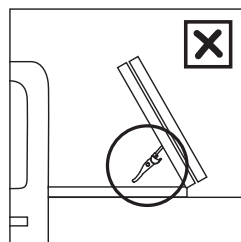
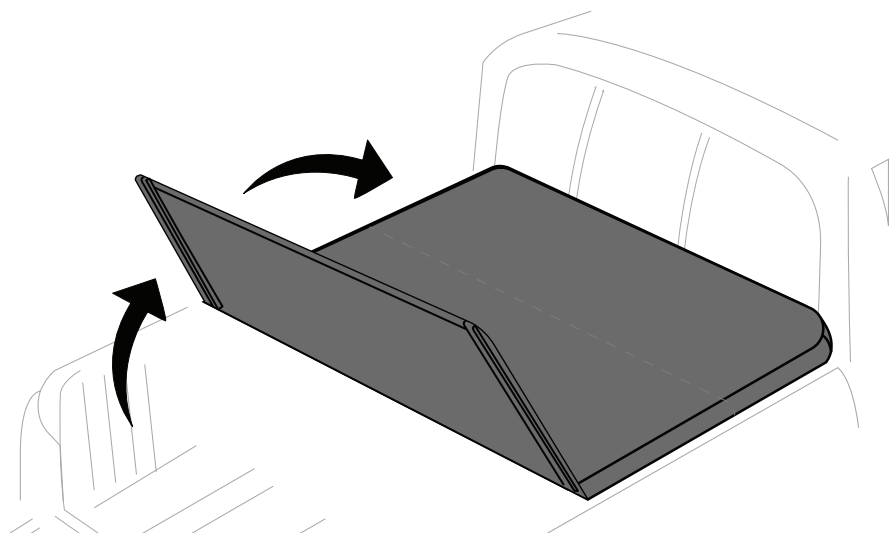
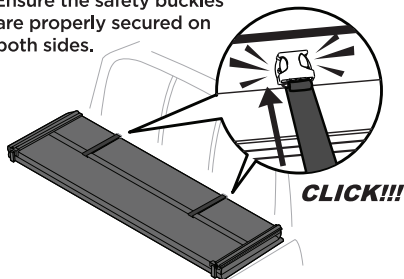


Fig. 4



• Ensure the safety buckles are properly secured on both sides.



## ATTENTION!

• DO NOT RELEASE THE FRONT CLAMPS AND SAFETY CLAMPS WHEN YOU UNFOLD THE COVER, AND MAKE SURE THEY ARE ALL SECURED!

(Only for models with utility track)

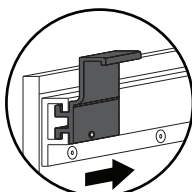
## SPECIAL INSTRUCTIONS FOR OPTIONAL BRACKETS

### For NISSAN FRONTIER

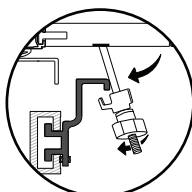
You will need:



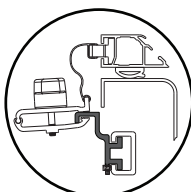
SP-BC3005



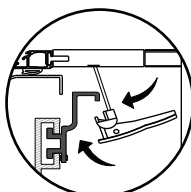
**a** Slide aluminum blocks into track



**b** Attach **Front Clamps** on to aluminum block



**c** Attach **Safety Clamps** on to aluminum block



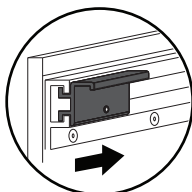
**d** Attach **Rear Latches** on to aluminum block

### For NISSAN TITAN

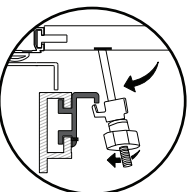
You will need:



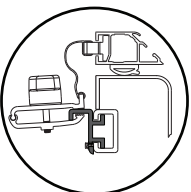
SP-BC3004



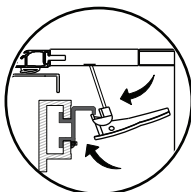
**a** Slide aluminum blocks into track



**b** Attach **Front Clamps** on to aluminum block



**c** Attach **Safety Clamps** on to aluminum block



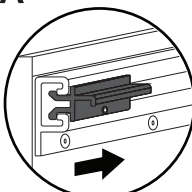
**d** Attach **Rear Latches** on to aluminum block

### For TOYOTA

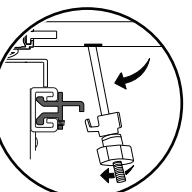
You will need:



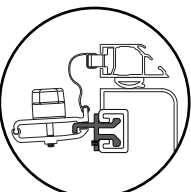
SP-BC3003B



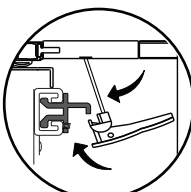
**a** Slide aluminum blocks into track



**b** Attach **Front Clamps** on to aluminum block



**c** Attach **Safety Clamps** on to aluminum block



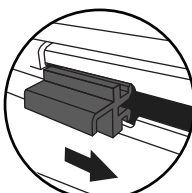
**d** Attach **Rear Latches** on to aluminum block

### For JEEP GLADIATOR

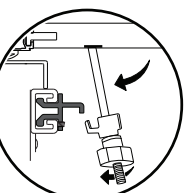
You will need:



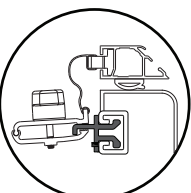
SP-BC3060



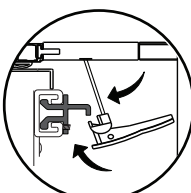
**a** Slide aluminum blocks into track



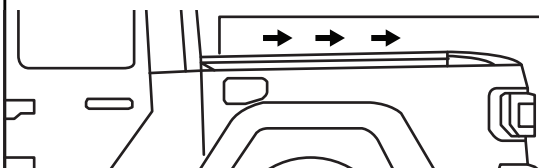
**b** Attach **Front Clamps** on to aluminum block



**c** Attach **Safety Clamps** on to aluminum block



**d** Attach **Rear Latches** on to aluminum block



**JEEP GLADIATOR:  
SLIDE BRACKET FROM THE FRONT**