



# TYGER®

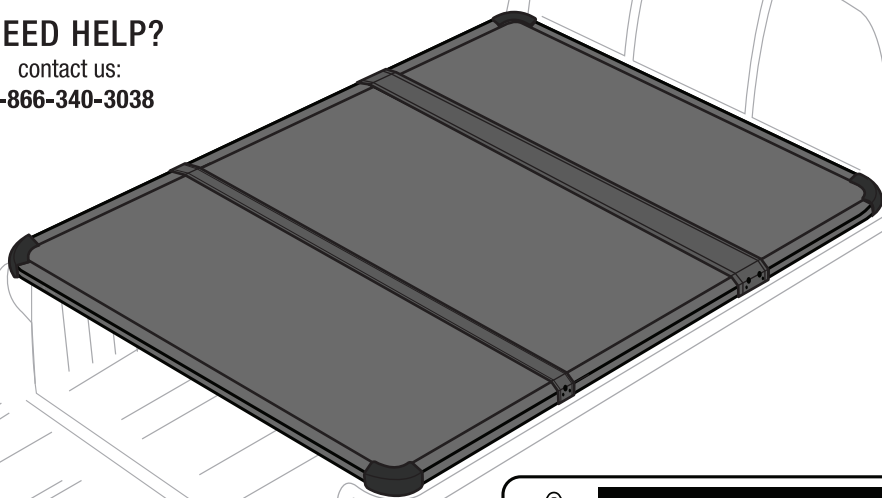
# T5 | ALLOY TRI-FOLD Tonneau Cover



**NEED HELP?**

contact us:

**1-866-340-3038**



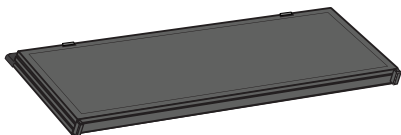
## ATTENTION!

READ INSTRUCTIONS CAREFULLY BEFORE STARTING INSTALLATION. REMOVE CONTENTS FROM BOX AND VERIFY ALL PARTS ARE PRESENT. FAILURE TO IDENTIFY DAMAGE BEFORE INSTALLATION COULD LEAD TO REJECTION OF ANY CLAIM.

## ITEMS LIST

(ONLY MARKED ITEMS ARE INCLUDED)

Bed Cover



☐ **x6** **SP-BC3003B**  
For Toyota

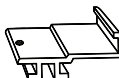
☐ **x6** **SP-BC3060**  
For Jeep Gladiator



☐ **x6** **SP-BC3004**  
For Nissan Titan



☐ **x6** **SP-BC3005**  
For Nissan Frontier



**x1** **SP-BC0003**  
Front Seal Strip  
67" x 1" x 0.4"



**x1** **SP-BC0004**  
Front Seal Strip  
67" x 1.4" x 0.16"



**x1** **SP-BC0005**  
Rear Seal Strip  
79" x 1.2" x 0.24"



**SP-BC3002**  
Clamp Pad



**SP-BC0006**  
2.5mm Allen Key

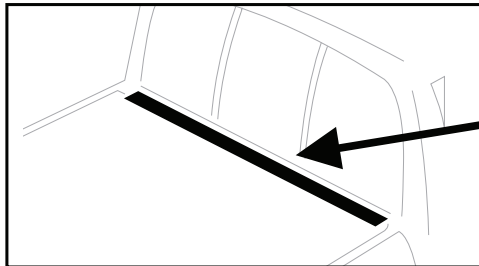


**SP-BC0010**  
3mm Allen Key



1

- Clean truck bed thoroughly before installation.
- Stick the supplied front seal strip on the front bed rail by aligning with the outer edge.
- Place the assembled cover on the bulkhead against the cab and release the safety buckles.



You might need:



**Seal Strip**

(Only apply to some models)



**ATTENTION!**

- IF THE TRUCK'S FRONT BED RAIL IS LOWER THAN THE SIDES, USE THE PROVIDED WEATHER SEAL STRIPS. GAPS ON THE FRONT BED AND TAILGATE WILL CAUSE NOISE AND FLAPPING ISSUES WHILE THE VEHICLE IS IN MOTION!

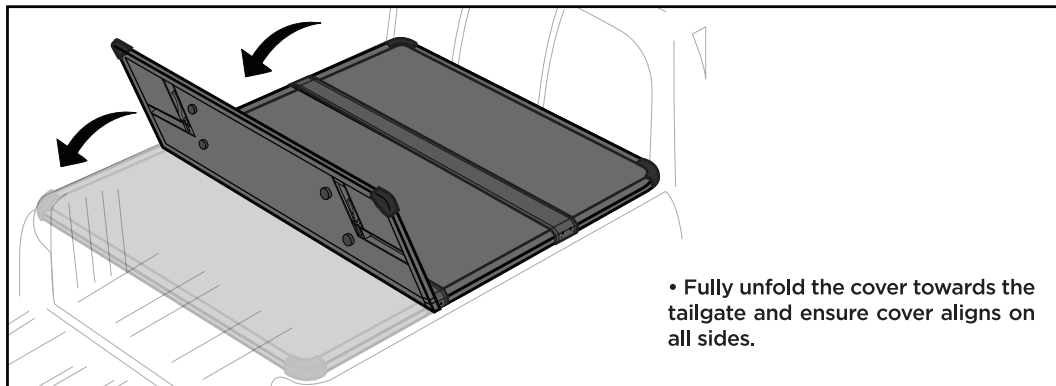
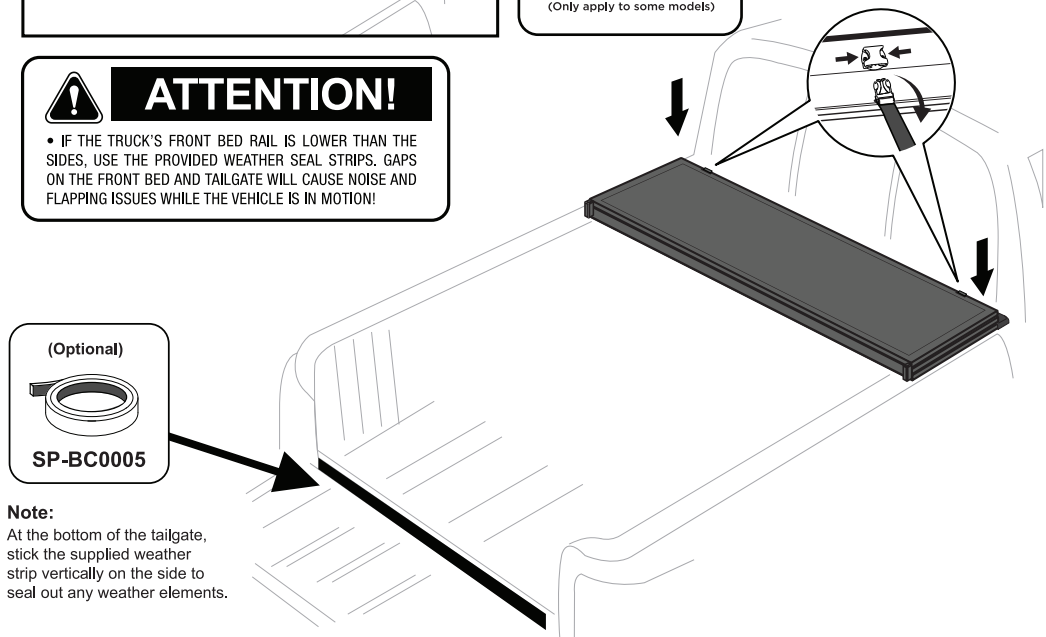
(Optional)



**SP-BC0005**

**Note:**

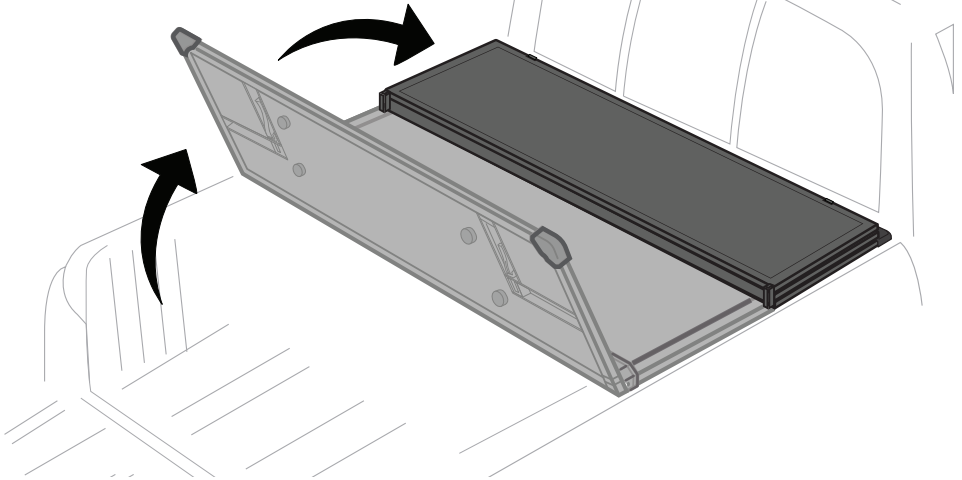
At the bottom of the tailgate, stick the supplied weather strip vertically on the side to seal out any weather elements.



- Fully unfold the cover towards the tailgate and ensure cover aligns on all sides.

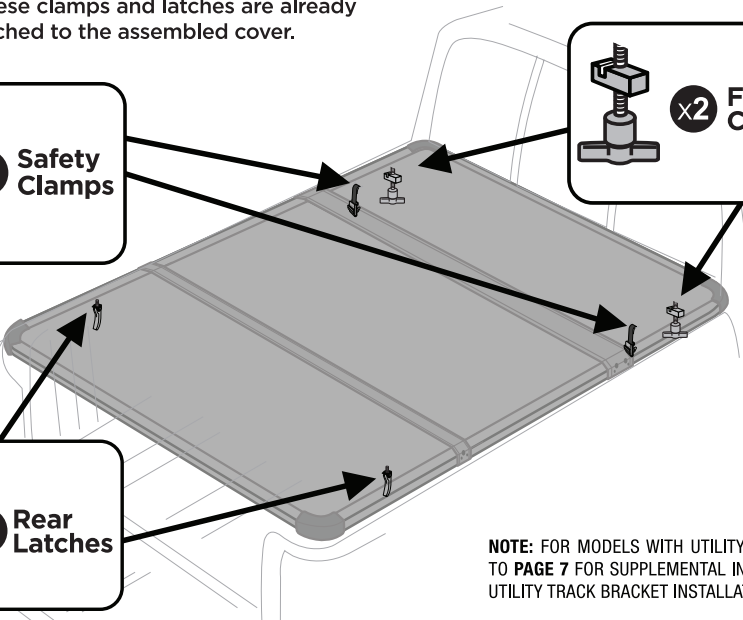
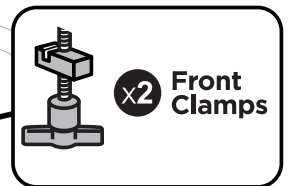
**2**

- Carefully refold the cover without moving its position on the truck bed


**3**

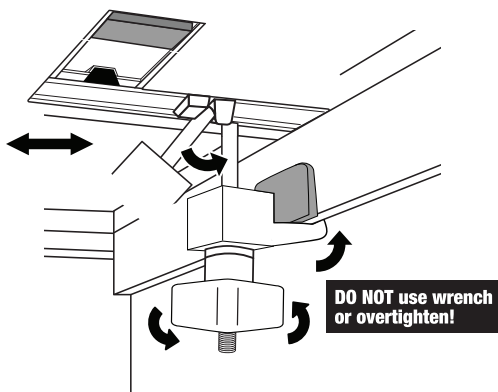
## CLAMPS AND LATCHES

- These clamps and latches are already attached to the assembled cover.

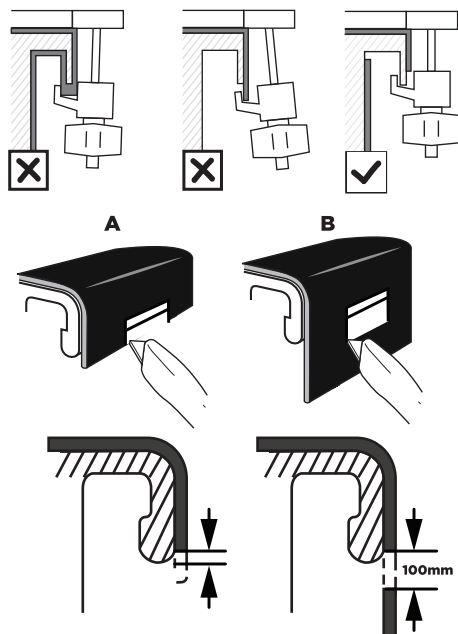


**NOTE:** FOR MODELS WITH UTILITY TRACK, REFER TO **PAGE 7** FOR SUPPLEMENTAL INSTRUCTION ON UTILITY TRACK BRACKET INSTALLATION.

## 4 FRONT CLAMPS USAGE

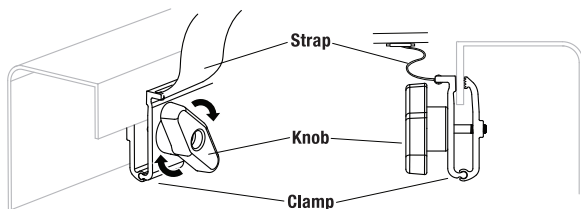


- Pull down front clamps into vertical position.
- Slide clamp to optimal position and hook jaw portion of the clamp under the metal bed rail lip. Clamp pad can be inserted at the contact point to protect paint.
- Turn the knob counterclockwise to tighten



## 5 SAFETY CLAMPS USAGE

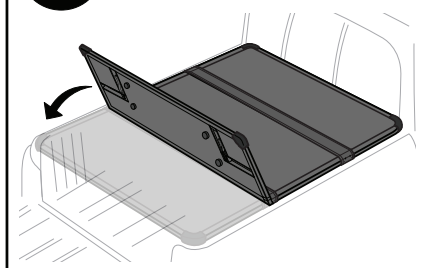
- Attach clamp to the metal bed rail lip on both side, then tighten clockwise.



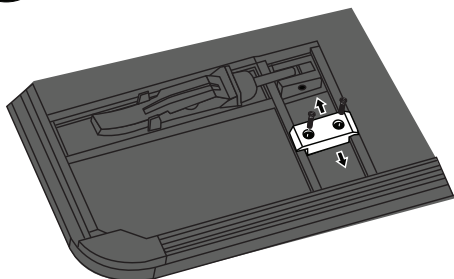
**DO NOT use wrench  
or overtighten!**

## 6

- Unfold the cover completely towards the tailgate.

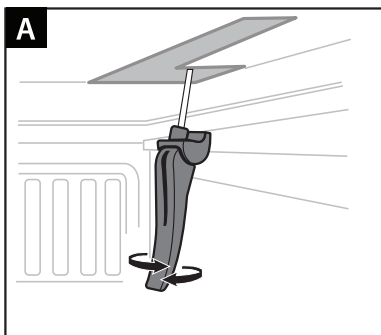


## 7 ADJUST THE STOPPER

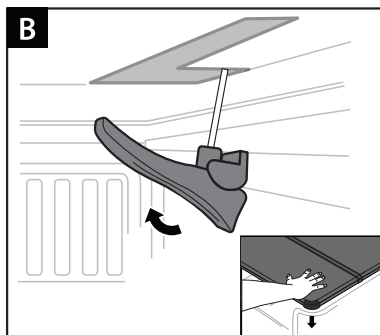


- Stopper should be flush against the truck side rail. If needed, adjust by unscrewing bolts with Allen Key. Then slide into the optimal position before re-installing the bolts .

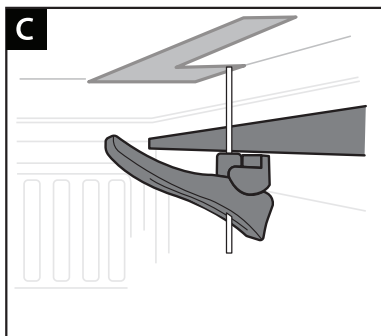
## 8 REAR LATCHES USAGE



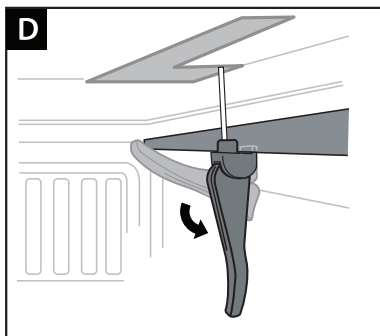
**A:** Start by pulling down latch handle from the back of cover. Then unscrew the handle to lower its position.



**B:** Make sure latch handle is lifted to its highest position (beyond 90°). With one hand firmly pressed down on the cover corner, continue to adjust the level of the jaw against side rail.



**C:** Optimally, opening of latch jaw should be as level with the side rail lip as possible without impeding access to the jaw groove.



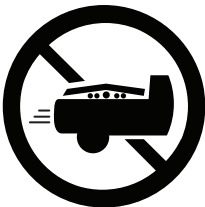
**D:** Latch the side rail lip fully into the groove of the jaw. Then crack handle down to tighten. Re-adjust jaw level in B if you experience any looseness from the latch.

**9**

## FINISH THE INSTALLATION

- After rear clamps have been latched securely, close/lock tailgate and cover cannot be opened from the outside.

# COMPLETED!!!



**DO NOT  
OVERLOAD CARGO**



**REMOVE SNOW  
BEFORE FOLDING COVER**



**SECURE ALL CLAMPS  
BEFORE DRIVING**

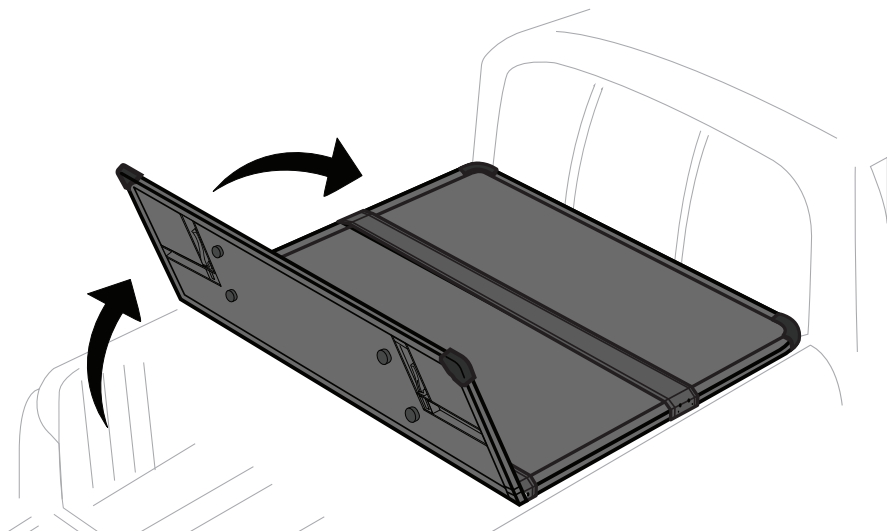
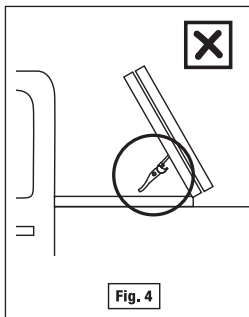
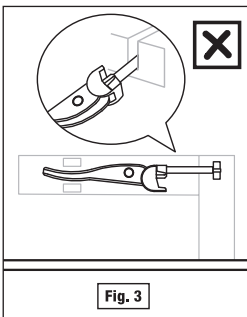
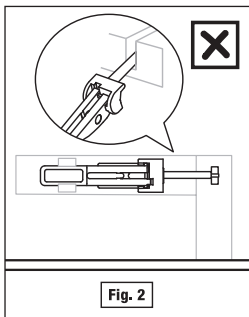
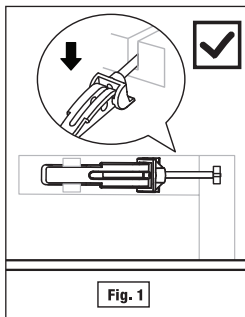


**USE SEAL STRIPS FOR  
EXPOSED GAPS TO  
AVOID LEAKING**

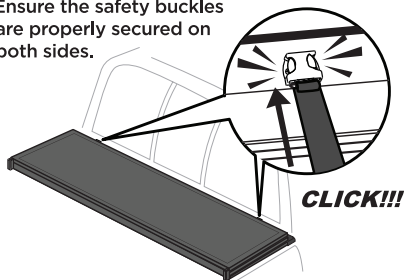
**NOTE:** COVER MAY NOT COMPLETELY COVER TO THE OUTSIDE EDGE OF THE BED RAILS DUE TO SLIGHT DIFFERENCE IN TRUCK BED SHAPE FOR DIFFERENT YEAR MODELS.

# 10 FOLDING UP THE COVER

• Open tailgate and release rear latches. Fold up the cover once; secure rear latch on both sides into the groove with the clamp jaw portion facing down as shown in Fig.1. Any other incorrect methods shown in Fig.2 - 4 will cause damage to the surface panel and void warranty.



• Ensure the safety buckles are properly secured on both sides.



## ATTENTION!

• DO NOT RELEASE THE FRONT CLAMPS AND SAFETY CLAMPS WHEN YOU UNFOLD THE COVER, AND MAKE SURE THEY ARE ALL SECURED!

# SPECIAL INSTRUCTIONS FOR ALTERNATIVE BRACKETS

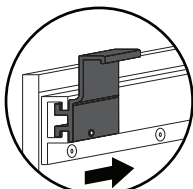
SUPPLEMENT TO INSTALLATION INSTRUCTIONS (Only for models with utility track)

## For NISSAN FRONTIER

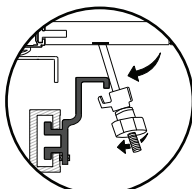
You will need:



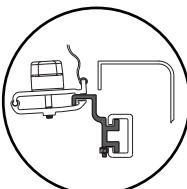
SP-BC3005



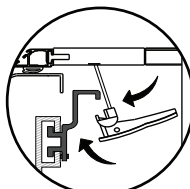
**a** Slide aluminum blocks into track



**b** Attach **Front Clamps** on to aluminum block



**c** Attach **Safety Clamps** on to aluminum block



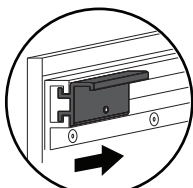
**d** Attach **Rear Latches** on to aluminum block

## For NISSAN TITAN

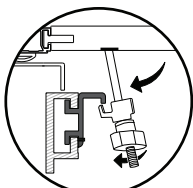
You will need:



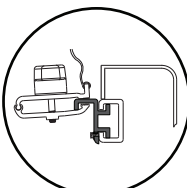
SP-BC3004



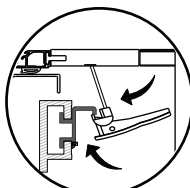
**a** Slide aluminum blocks into track



**b** Attach **Front Clamps** on to aluminum block



**c** Attach **Safety Clamps** on to aluminum block



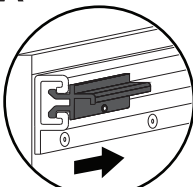
**d** Attach **Rear Latches** on to aluminum block

## For TOYOTA

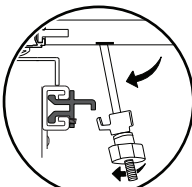
You will need:



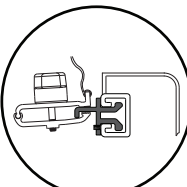
SP-BC3003B



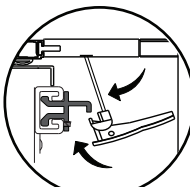
**a** Slide aluminum blocks into track



**b** Attach **Front Clamps** on to aluminum block



**c** Attach **Safety Clamps** on to aluminum block



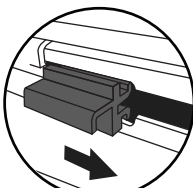
**d** Attach **Rear Latches** on to aluminum block

## For JEEP GLADIATOR

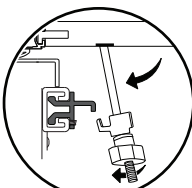
You will need:



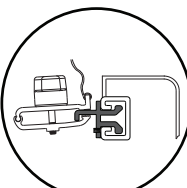
SP-BC3060



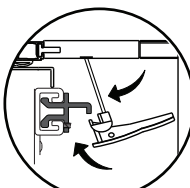
**a** Slide aluminum blocks into track



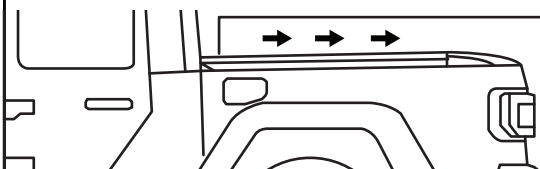
**b** Attach **Front Clamps** on to aluminum block



**c** Attach **Safety Clamps** on to aluminum block



**d** Attach **Rear Latches** on to aluminum block



**JEEP GLADIATOR MODEL  
SLIDES FROM THE FRONT**