



RUST BUSTER

RB7718 Forward Gas Tank Crossmember 2002-2008 Dodge Ram 1500



VIDEO AVAILABLE



REQUIRED TOOLS

Jack Stands or Lift
Mig Welder
Paint/Primer
Hand Grinder
Cutting Wheel or Torch
Welding Gloves
Welding Hood/Shield
Ear & Eye Protection
Sockets & Wrench
Fire Extinguisher
Tape Measure or Ruler
Marker or Chalk
Hammer

KIT CONTAINS

Forward Fuel Tank Crossmember
M10 Insert Flange Locknut

QTY

1
1



RUST BUSTER

RB7718

Forward Gas Tank Crossmember 2002-2008 Dodge Ram 1500

1) PREPARING YOUR VEHICLE

Begin by disconnecting your battery prior to starting your installation.

Inspect your vehicle for leaking fuel lines, fuel tank and engine components. If you have fuel leaks repair all leaks prior to starting your installation. If your fuel tank is near your welding area **remove your tank prior to welding.**

Remove all combustible items above the work area such as seats, carpets, padding, etc.

Keep all flammable materials away from the vehicle work area.

2) PREPARING YOUR WORKSTATION

Keep a fire extinguisher close by in the case of fire and make sure you always have a designated "Fire Watch" to assist during the cutting or welding phases.

Abide by all apprenticed welding safety standards and practices.

Always use appropriate welding eye protection, ear protection, and work and fire safety gloves during the installation and within the work area.



WARNING!

If you are unsure on how to perform the installation or how to operate any of the required tools listed above, it is **HIGHLY** advised that you enlist the work of a certified welder/installer.

Failure to follow proper safety precautions and instructions may result in serious injury. **The user assumes all liability when installing the product.**



RUST BUSTER

RB7718

Forward Gas Tank Crossmember 2002-2008 Dodge Ram 1500

3) **PREPARING FOR YOUR INSTALL**

Lift or remove the cab. This will involve loosening or removing the body mount bushings. Remove the fuel tank straps and fuel tank. Remove or protect any fuel lines, brake lines, and wiring harnesses.

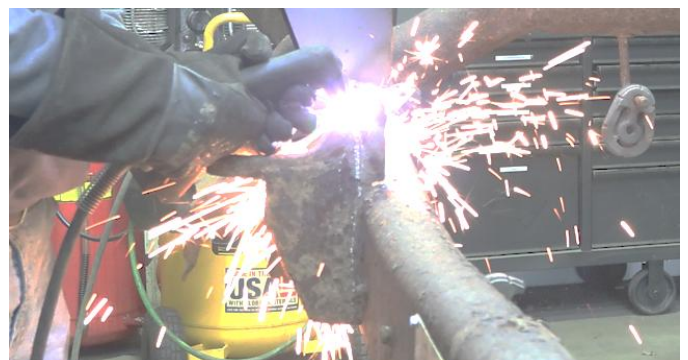
4) **CUT**

Begin by cutting out the factory forward fuel tank crossmember. This crossmember is designed to sit flush with the outside walls of your frame. Unless you are replacing the body mounts attached to the factory crossmember; you will be separating the body mounts from the factory crossmember. Your cut line will be drawn vertically from the outside wall of your frame. It is suggested to leave some material towards the inside of the frame to allow for iterative trimming to achieve the tightest fit between the new crossmember and your factory body mounts. You can cut your crossmember in half to make it easier to remove.

After removing your crossmember, grind the frame free of rust and debris, revealing bare metal.



Next, hold the replacement forward gas tank crossmember up to the frame and mark off the section of the body mount that needs to be removed for the crossmember to fit properly. We recommend measuring twice to ensure that you're cutting the right amount of material. Then, cut off the marked section of your body mount.





RUST BUSTER

RB7718

Forward Gas Tank Crossmember 2002-2008 Dodge Ram 1500

Spray the work area with a weld through primer to help prevent against rust development.

5) **WELD**

Slide your replacement crossmember into place, lining it up with your two rear body mounts. Tap it into place with a hammer.



Once you have your crossmember in place, follow proper welding procedures and tack weld your crossmember to the frame. Then, weld the part on fully. Weld 100% around all edges.



6) **REINSTALL**

If you decided to remove your rear body mounts, we show you how to reinstall them with the installation videos on our YouTube channel:

- RB7724L/R - Rear Body Mount

7) **PAINT**

Paint the part with primer or other rust inhibitor to help prevent or reduce the risk of rust formation.

We recommend our Rust Buster Rust Converter & Primer Spray Paint (RB9917).



8) **REINSTALL**

Reinstall your fuel tank, fuel tank strap, and your body mounts bolt and bushing.